



***SALICE***

***Pacta***

---

*Hinge for drop down doors*

USA  
CDN







# *Pacta*

*Compactness and functionality for flap doors.*

## *Compact design, high performance*

- Compact, self-supporting hinge, designed for flap doors.
- Clean, linear design with no external support elements.
- Cover caps available in different finishes to blend harmoniously with the cabinet style.
- Matching covers available for the version with a central hinge on large-size doors.

## *Fast, functional installation*

- Quick installation through snap-on mounting plates.
- Direct, three-way adjustment for precise alignment.
- Integrated decelerator that gently guides the door to the fully open position.
- Tested and certified to level 3 of UNI EN 15828:2010
- Adjustable central hinge, suggested for cabinets wider than 900 mm

## *Versatility*

- Suitable for wood and aluminum-framed doors.
- Soft-down motion.
- Compatible with Smove or Push systems for handle-less doors.





## *Pacta*

Compact design, high performance

Streamlined shape, outstanding performances.

Pacta is the hinge for drop down doors that operates without cables or pistons.

During opening, the door moves with a smooth, controlled action thanks to the integrated deceleration.

When opened, the door perfectly aligns with the cabinet base.



CHARLES CHAPLIN TAS  
TOM CRUISE TAS  
SIGOURNEY WEAVER TAS  
JOHN TRAVOLTA TAS





# *Pacta*

## *Versatility in everyday spaces*

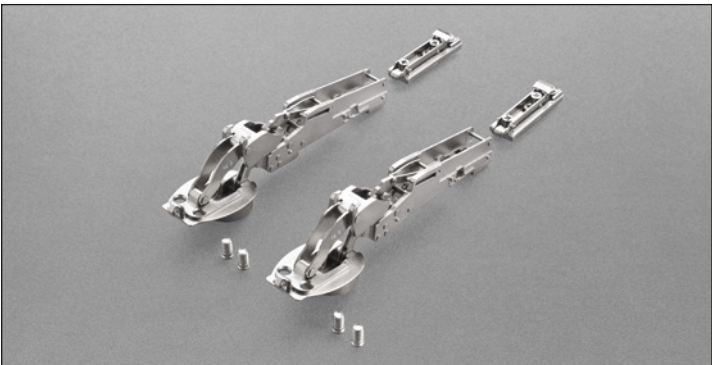
Also available in the Push version, Pacta is ideal for space-saving solutions for kitchens, living rooms, hotels, and bedrooms.

Pacta can help create bar units, writing surfaces or functional desks — all with a single, elegant movement.

Pacta can be fitted to wooden or aluminium-profile doors.

## *Elegant design*

A refined range of finishes makes Pacta perfect for any interior, backed by the reliability that defines premium systems.

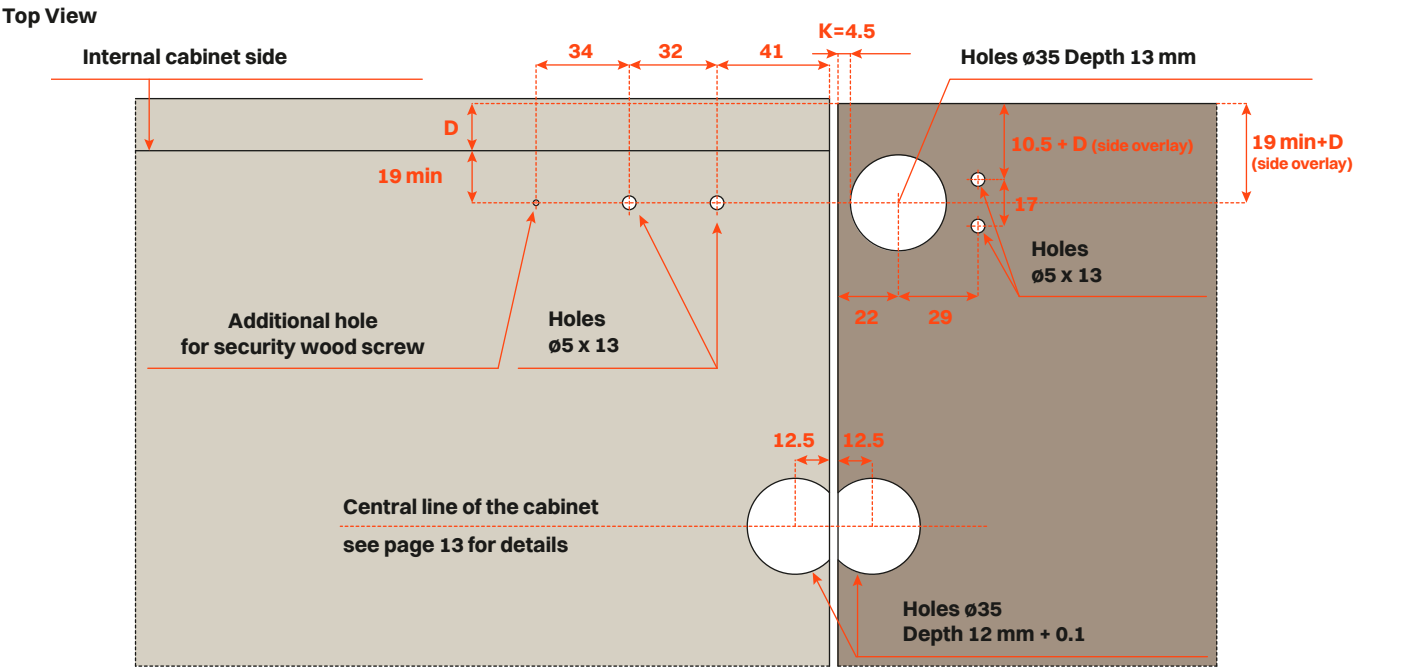
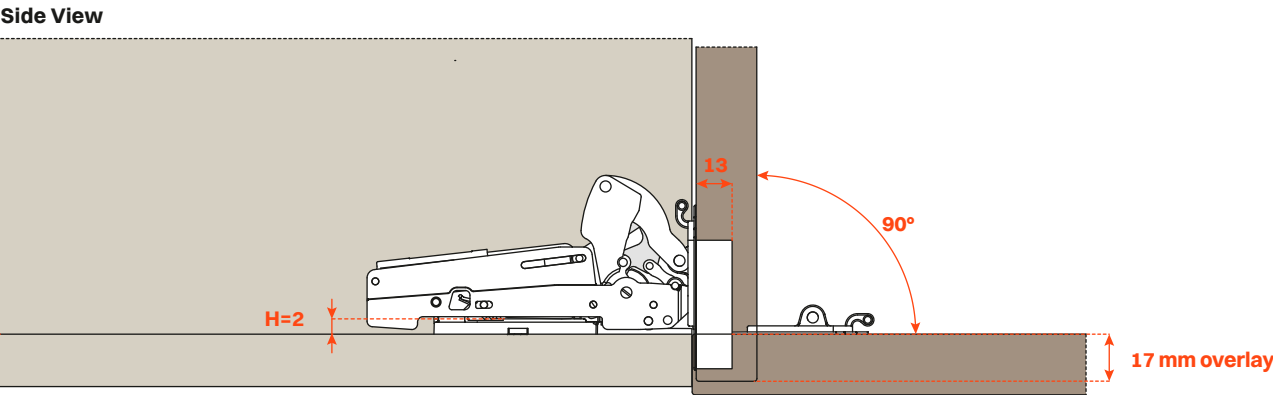


Technical information

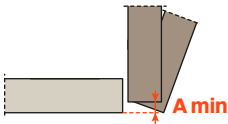
Hinges with Soft Opening and self close feature.

Standard drilling of the door  $\varnothing 35$ .  
13 mm deep cup.  
90° opening.  
Fixed K = 4.5 mm.  
Minimum door height of 11"  
Maximum door height of 16"  
Minimum door thickness of 16 mm  
Maximum door thickness of 28 mm.  
Overlay 17 mm  $\pm$  adjustment.  
Attachment to the cabinet with in-line, snap-on mounting plate  
(BAPGR29/16).  
Pacta is tested and certified to level 3 of UNI EN 15828:2010

Drilling patterns



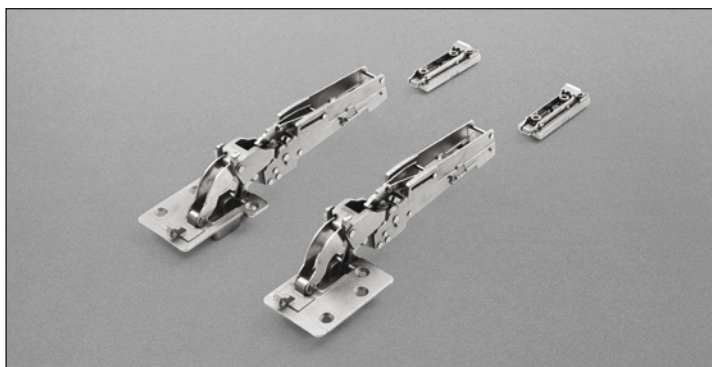
Space needed to open the door



	T=	16	17	18	19	20	21	22	23	24	25	26	27	28
K=4.5	A=	1.3	2.1	3	3.9	4.8	5.7	6.6	7.5	8.5	9.4	10.4	11.3	12.3



*For aluminum doors*



## Technical information

**Hinges with Soft Opening and self close feature.**

Attachment to the cabinet with in-line, snap-on mounting plate (BAPGR29/16).

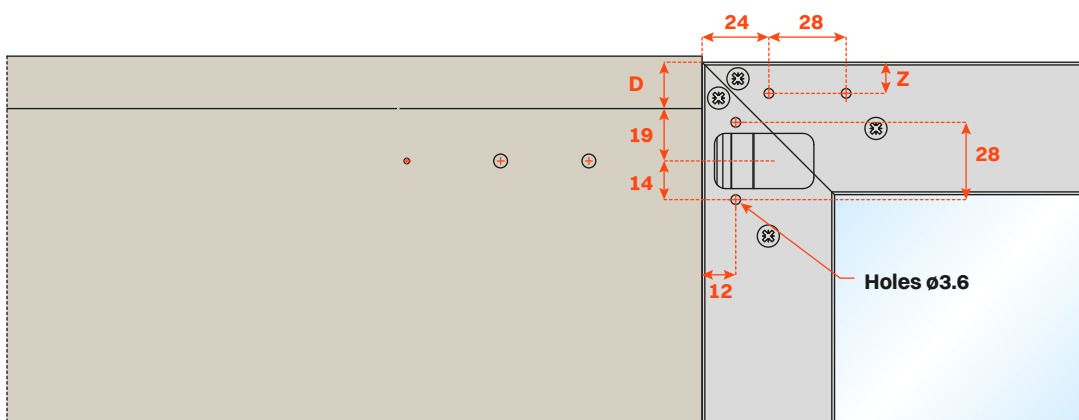
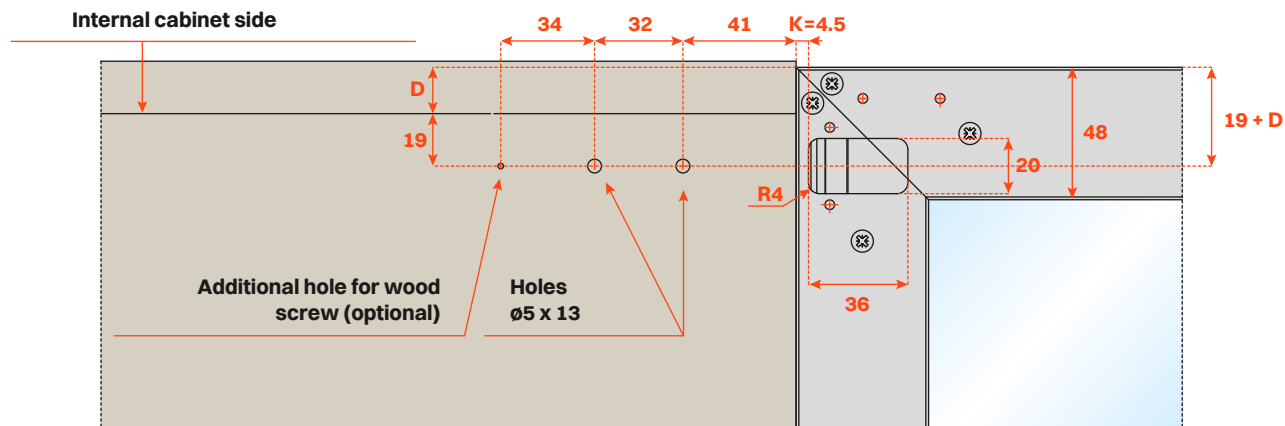
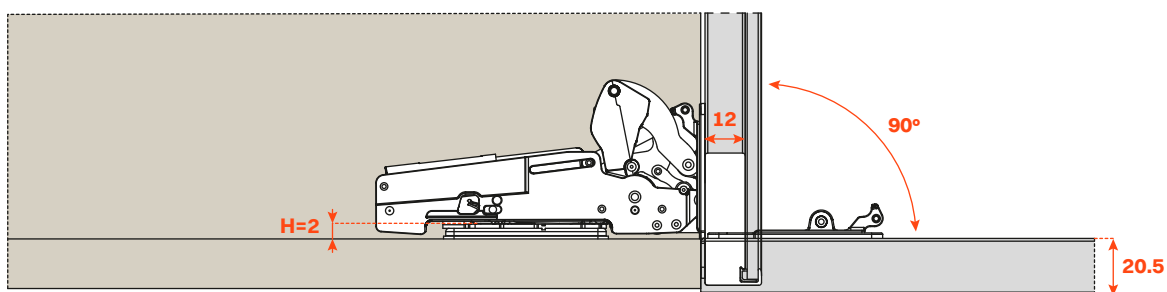
12 mm deep cup.

90° opening.

Fixed K = 4.5 mm.

Also available with Push-to-open system for handle-less doors

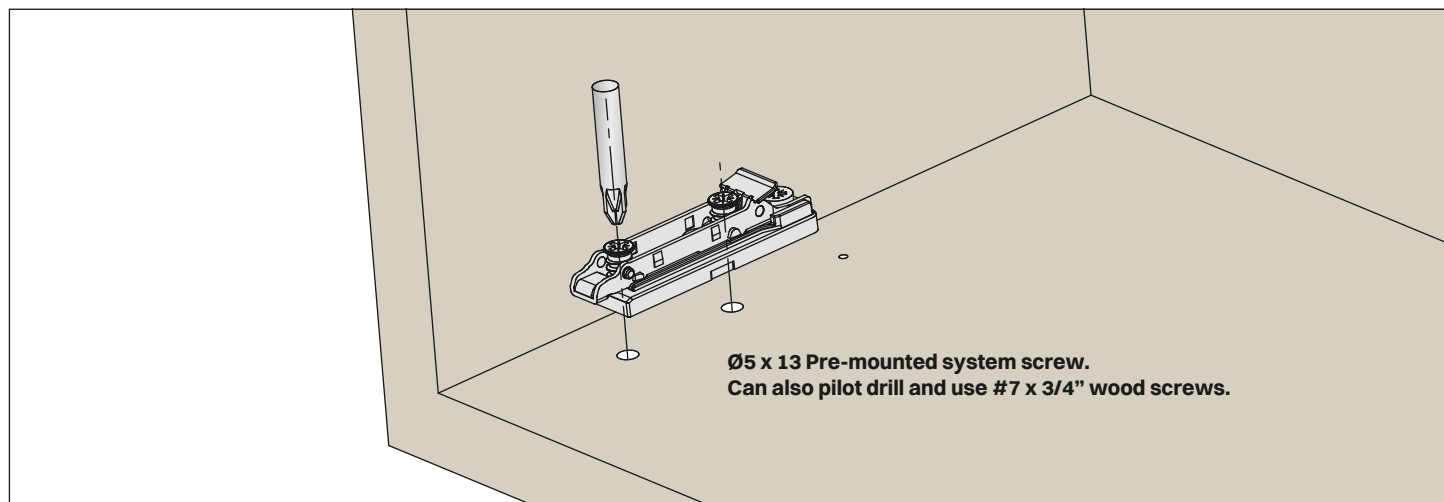
## Drilling patterns



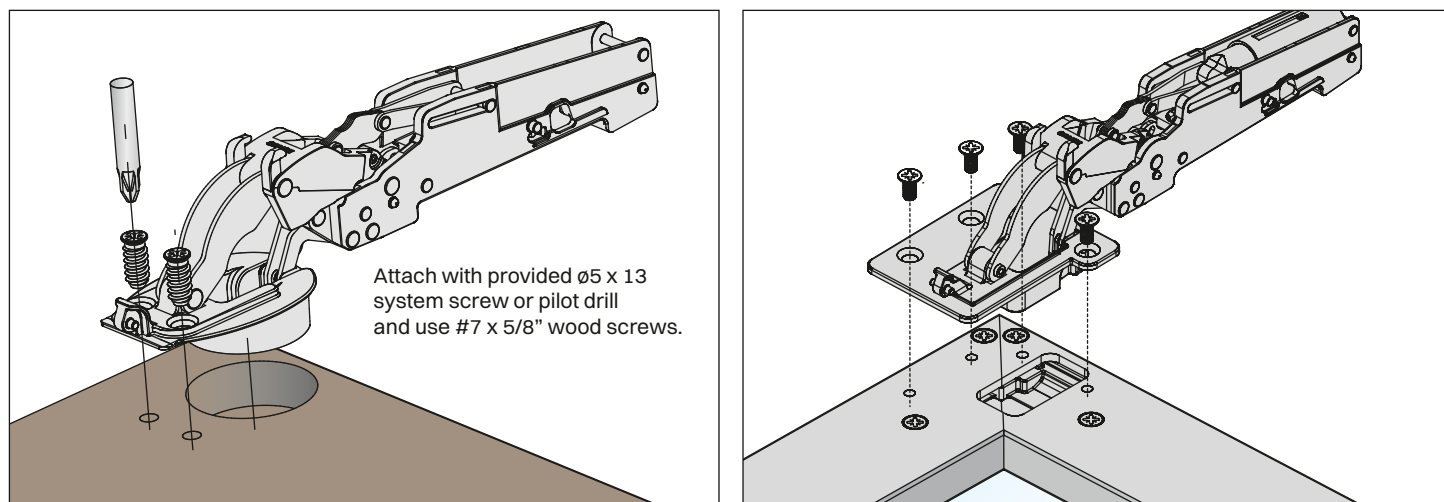
# Pacta

Assembly instructions

## Attaching the mounting plate to the cabinet

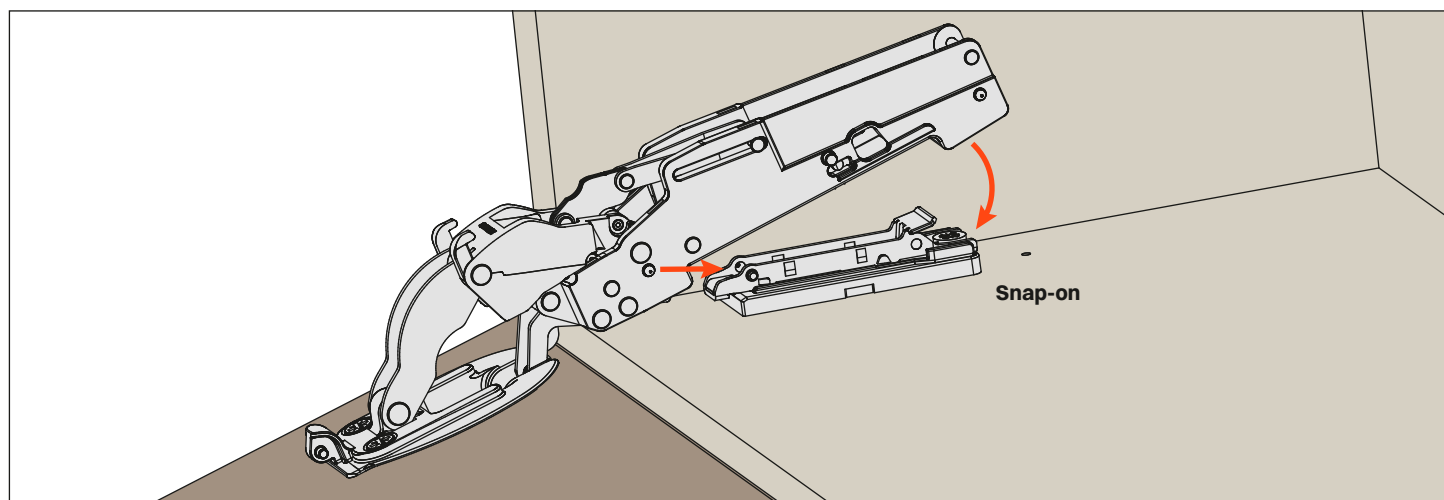


## Attaching the hinge to the door



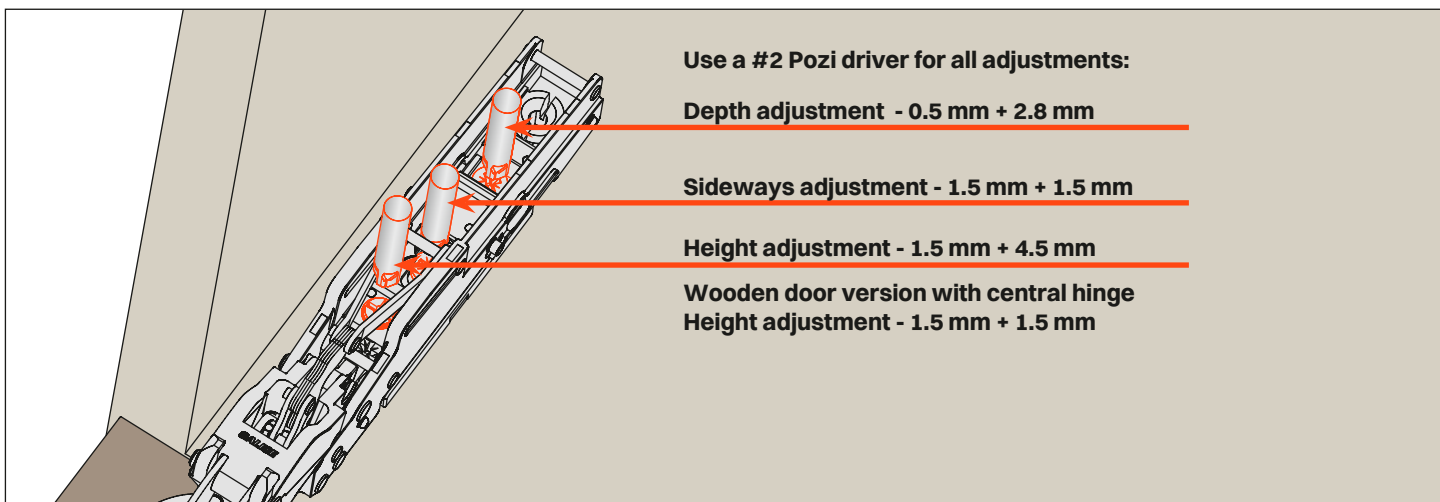
## Attaching the door to the cabinet

Snap the hinge arm onto the mounting plates. This operation is tool free.

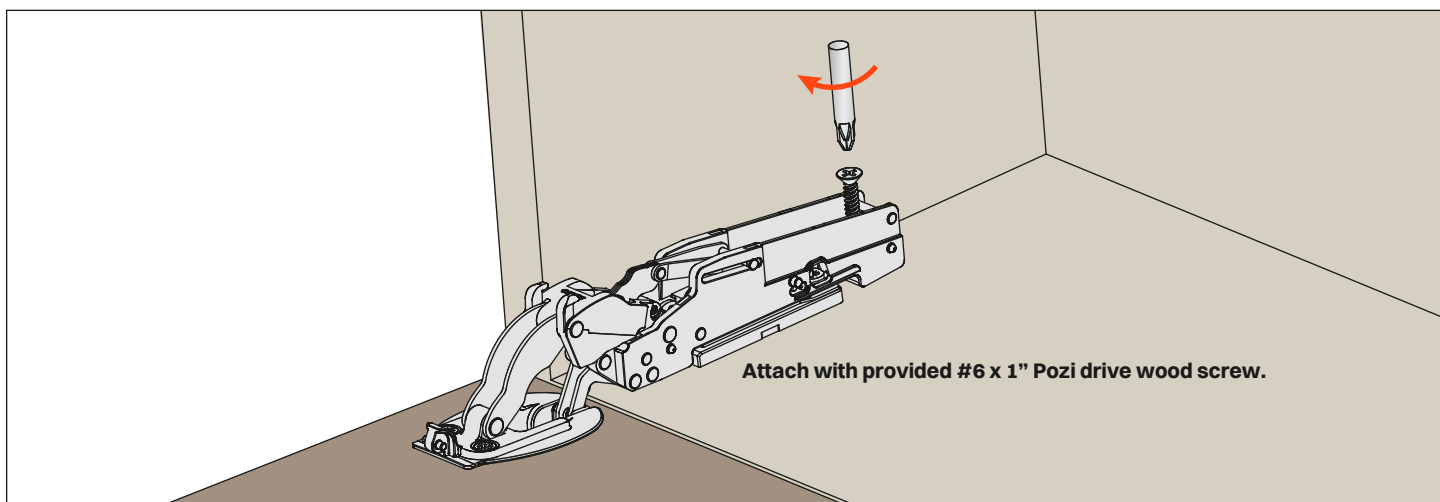




## Adjustments

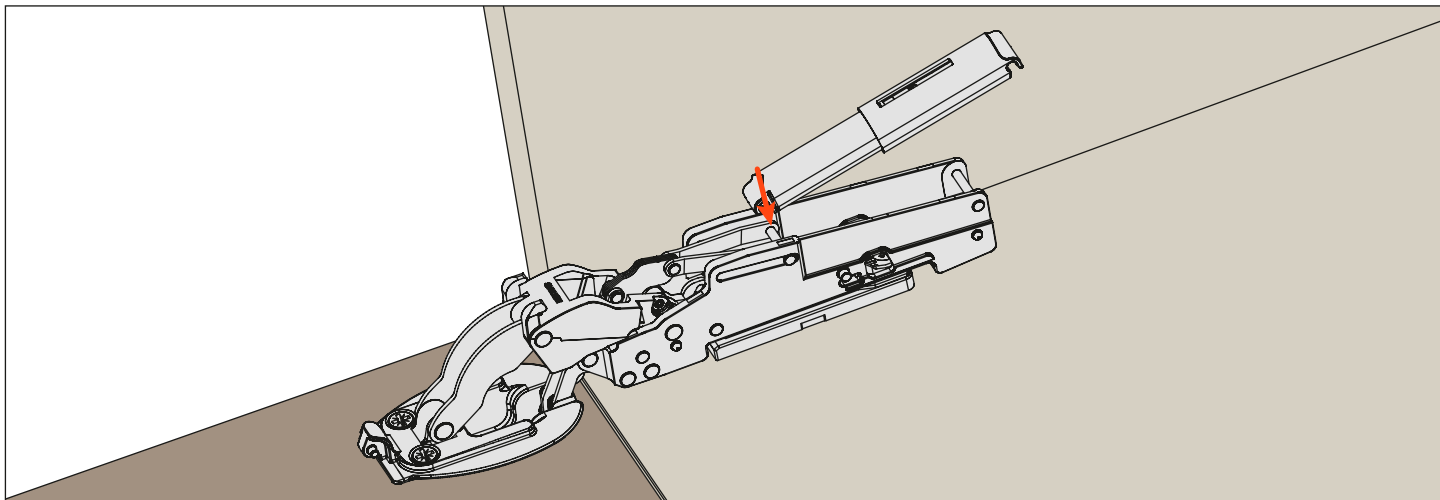


Attach the security wood screw



## Installing the Smove

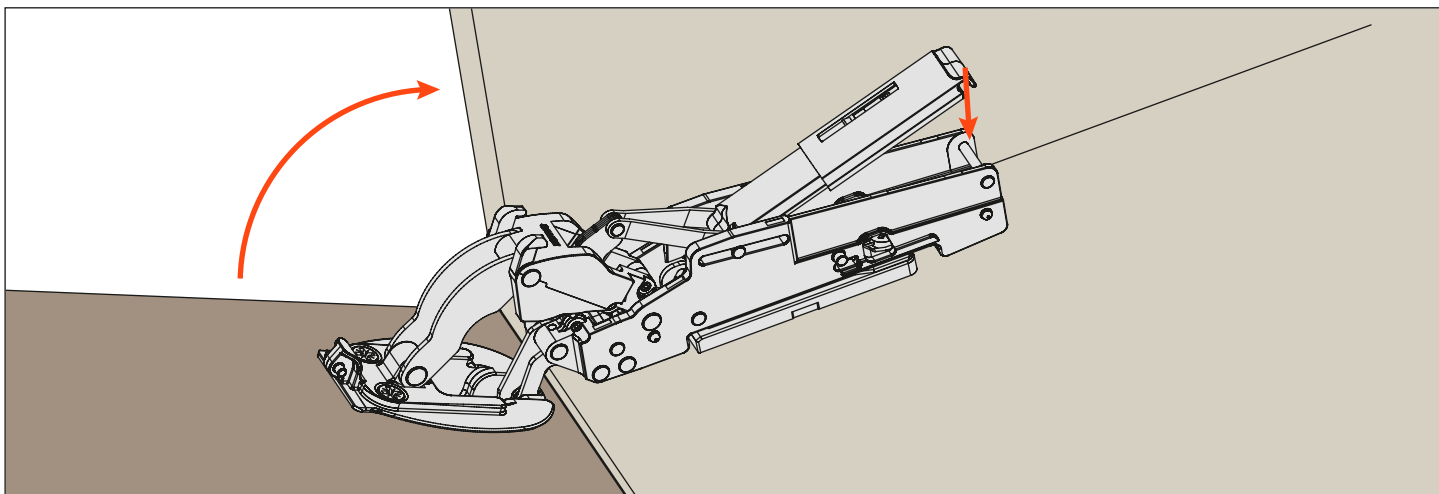
Snap the narrow end of the Smove into position. This operation is tool-free.



# Pacta

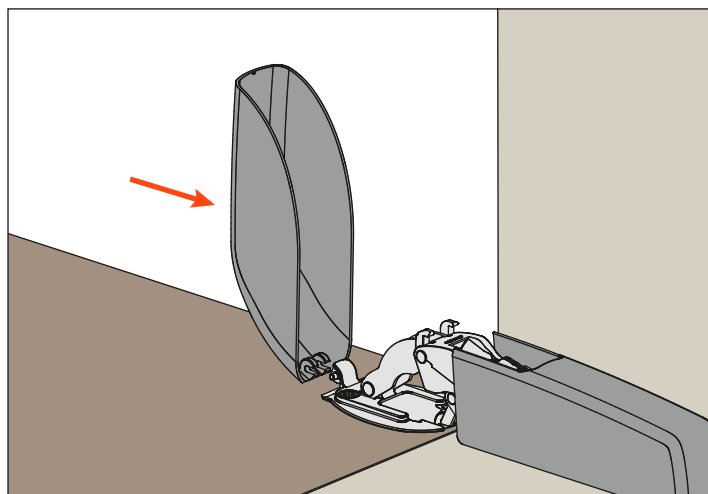
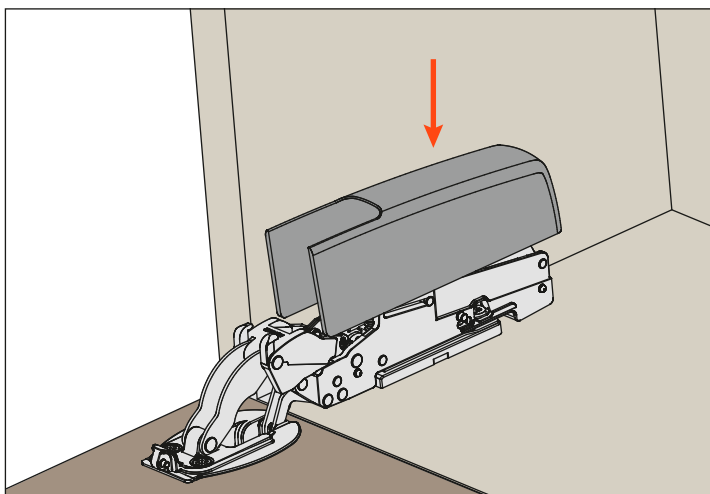
## Assembly instructions

Lift the flap slightly and clip the other end of the Smove into position. This operation is tool free.

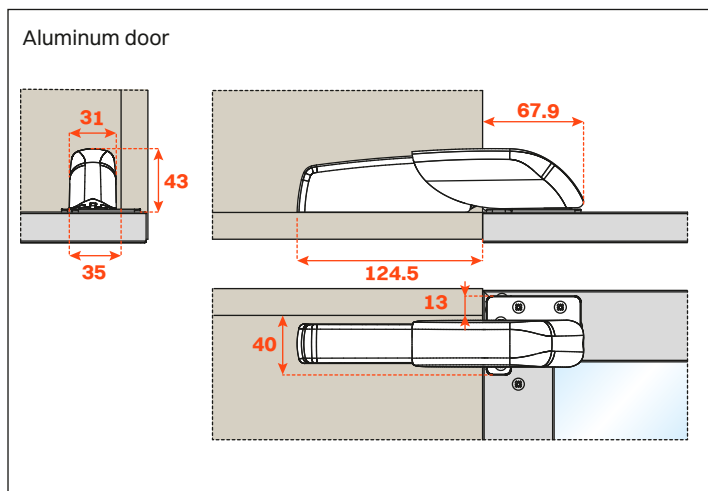
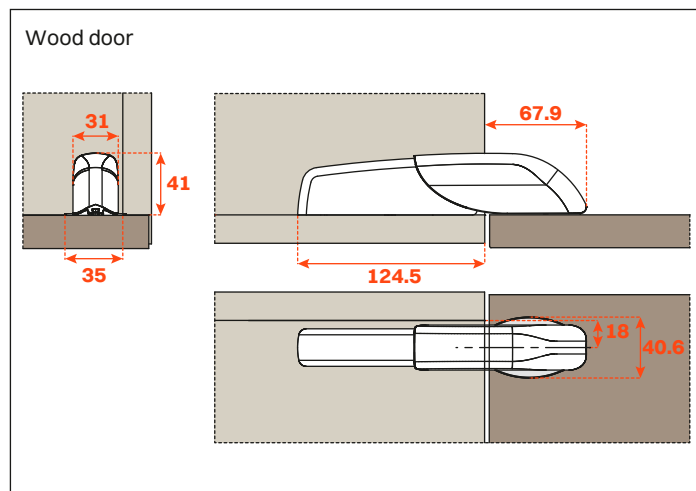


### Installing the cover

Firstly install the cover on the hinge arm and then to the cup.



### Dimensions



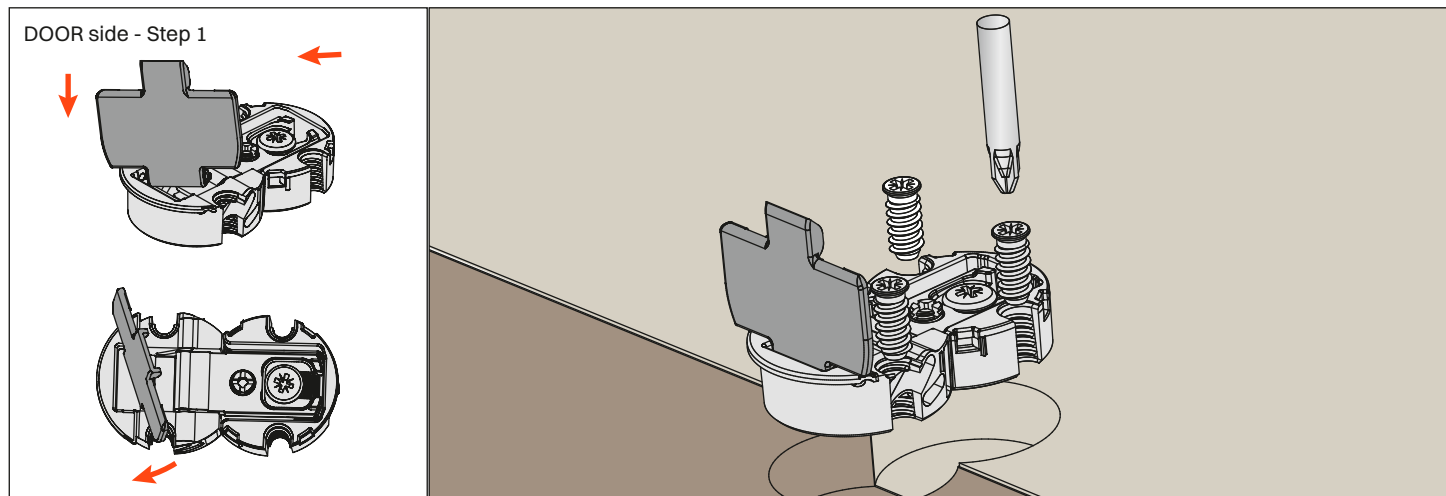


## Assembly instructions for the center hinge

Installation of the center hinge.

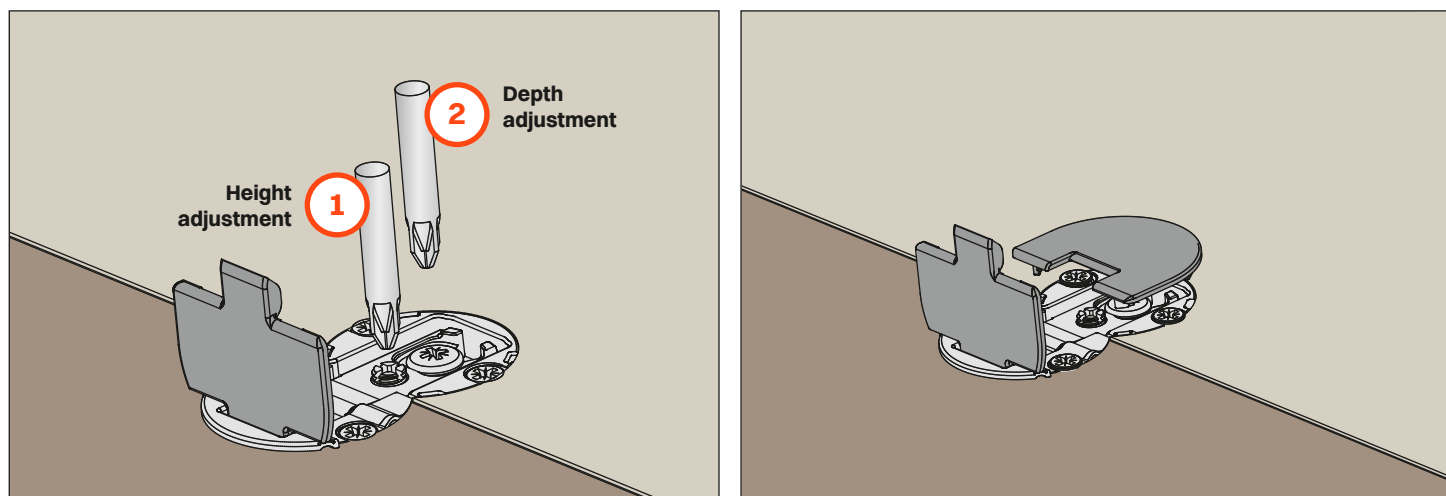
Recommended to install a hinge for cabinets 30"/762 mm or wider.

Install the cover cap onto the hinge according to the drawing (step 1) and then screw the hinge to the cabinet (step 2).

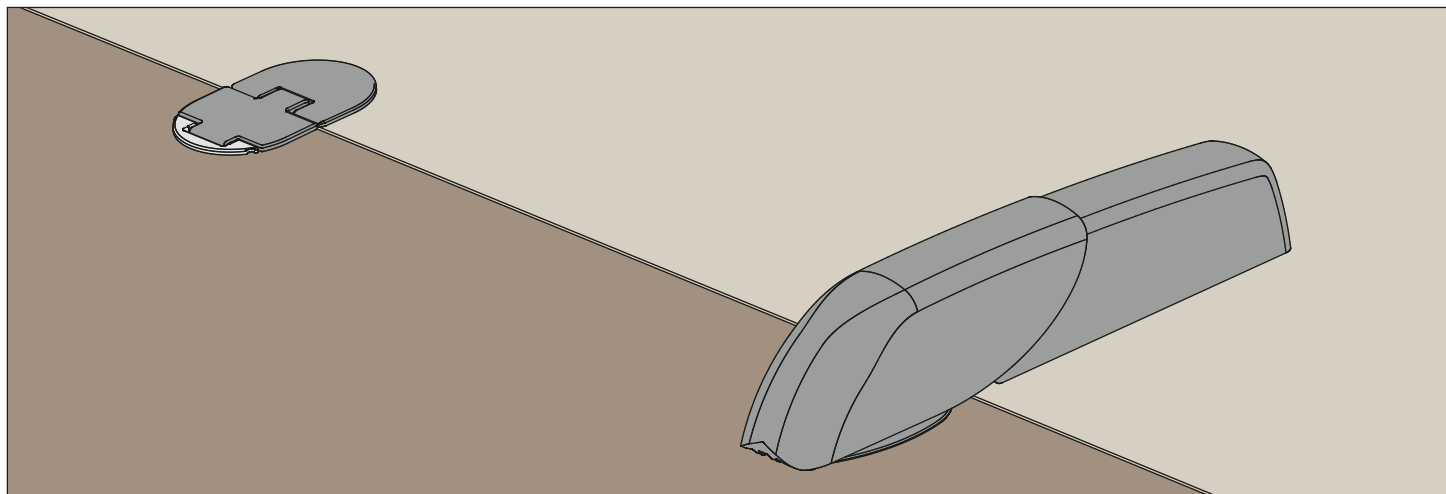


After attaching the hinge, make any adjustments required.  
Use a #2 Pozzi driver for all adjustments.

Install the cover cap onto the hinge on the cabinet side.



Overall view of the mounted system.

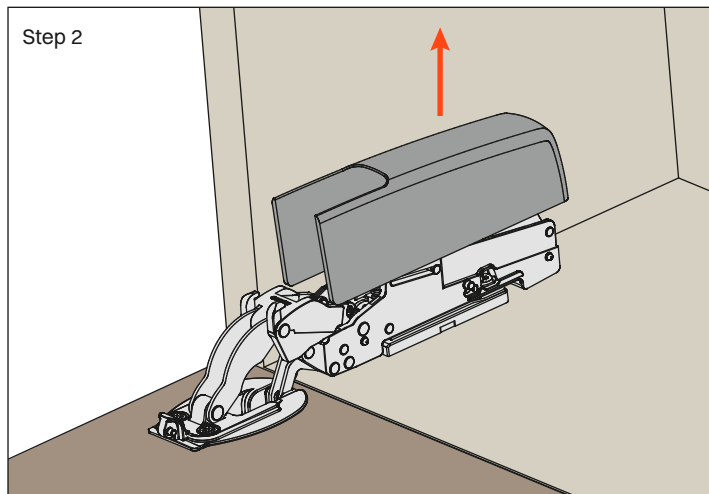
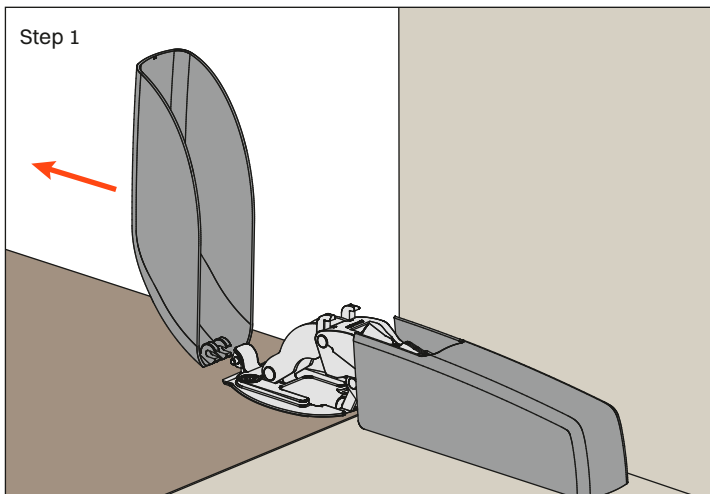


# Pacta

## Disassembly instructions

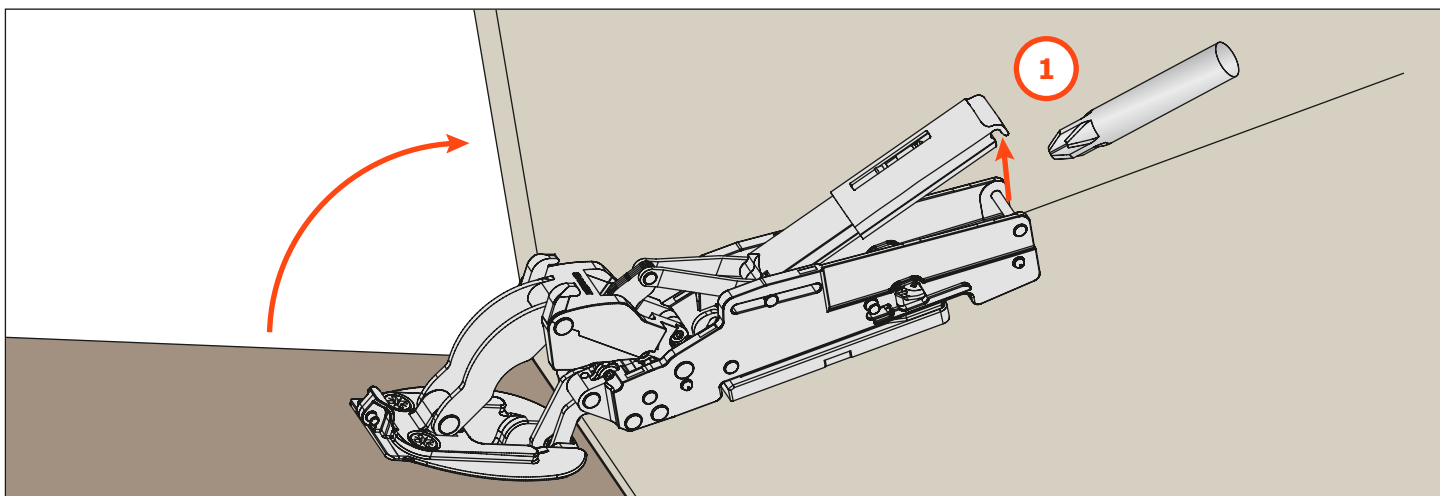
### Removal of the cover

First remove the cover from the hinge cup (step 1), then the cover from the arm (step 2).

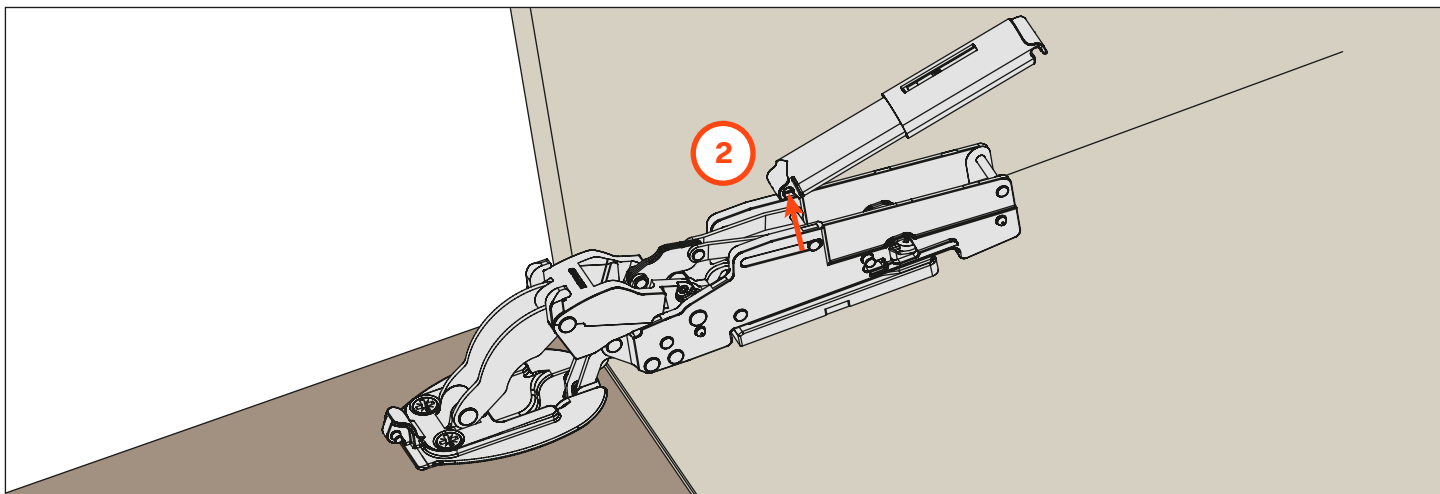


### Removing the Smove from the hinge arm

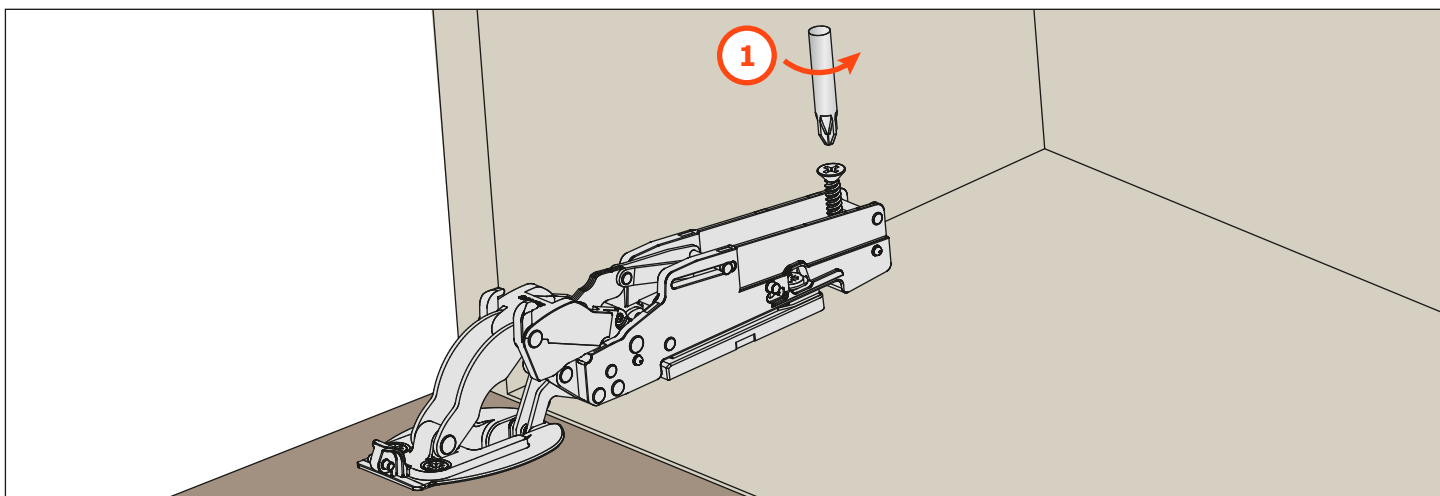
Lift the door slightly and un-snap the back of the Smove using a screwdriver.



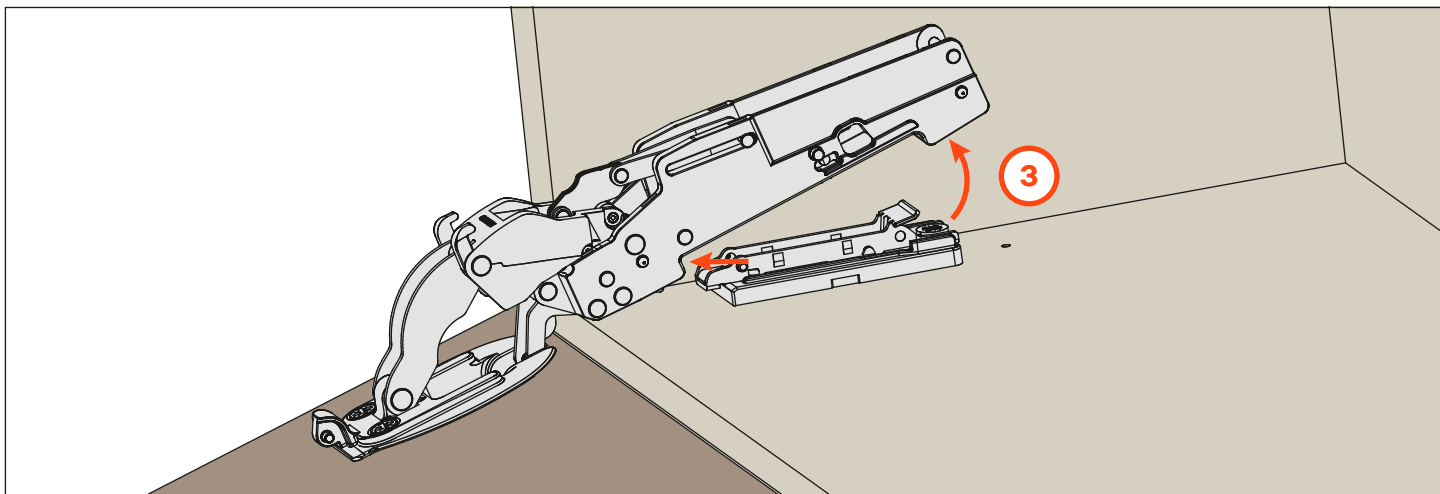
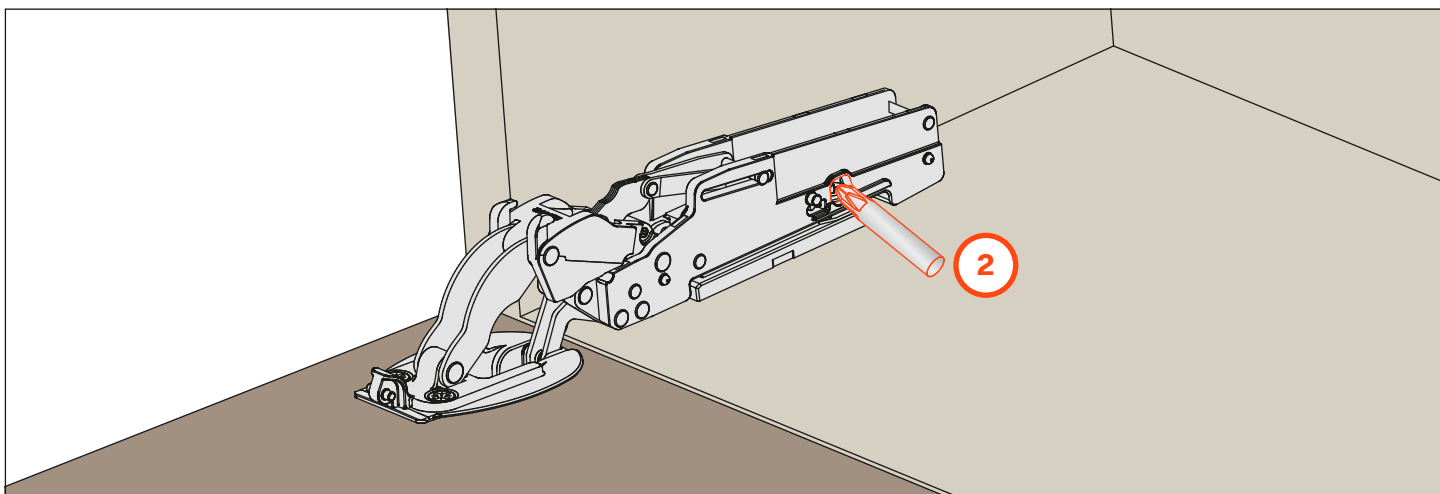
Un-snap the other end of the Smove.



Remove the security screw



Un-snap the hinge from the mounting plate with a screwdriver

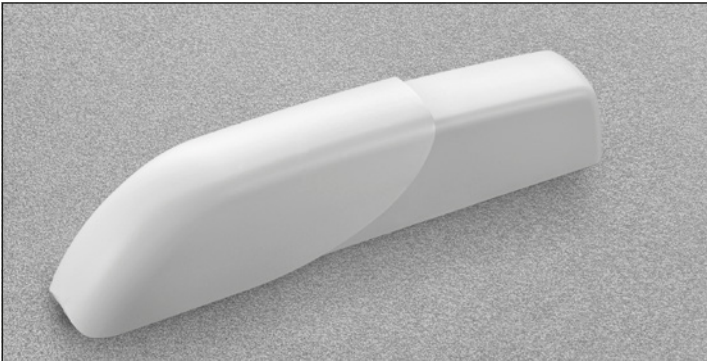




**Pacta**  
Cover finishes

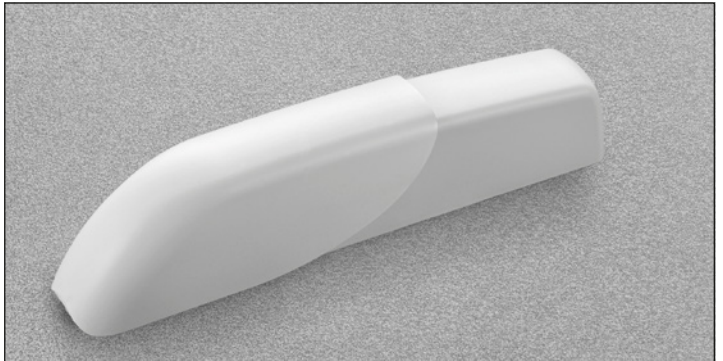
**SRX B78A1XXXNF**

White



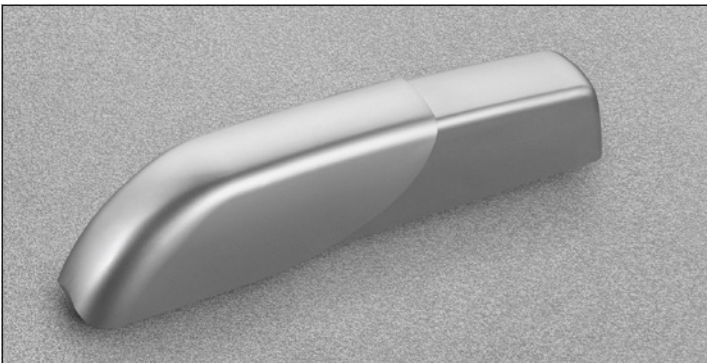
**SRXB78AQXXXNF**

Glossy white



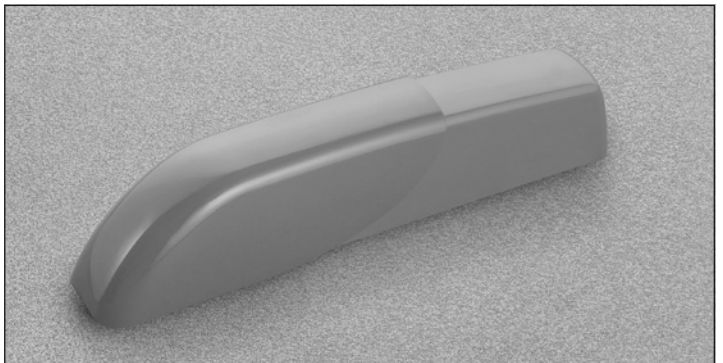
**SRXB78AIXXXNF**

Stainless steel



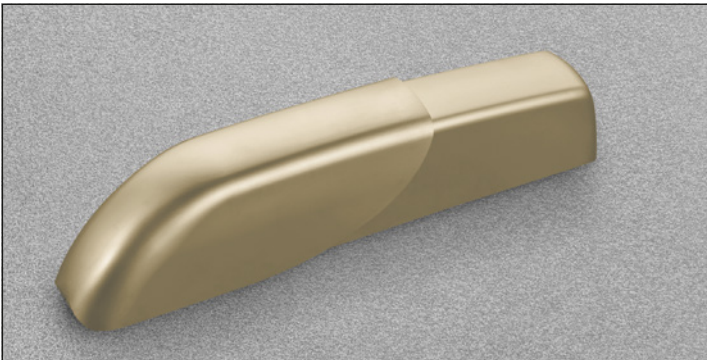
**SRXB78AMXXXNF**

Grey



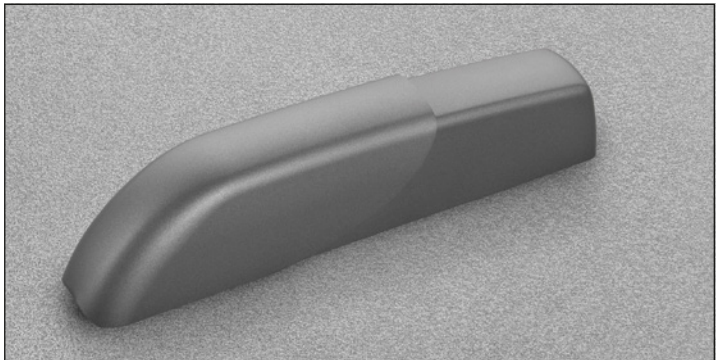
**SRXB78ACXXXNF**

Champagne



**SRXB78A0XXXNF**

Satin metal black



**SRXB78ANXXXNF**

Glossy metal black

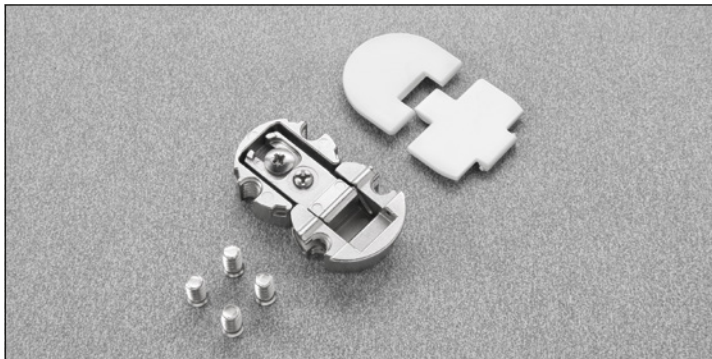




*Center hinge cover finishes*

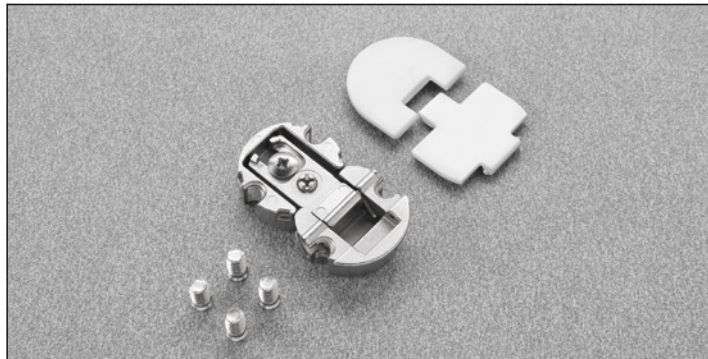
**FRCK59RXXX1**

White



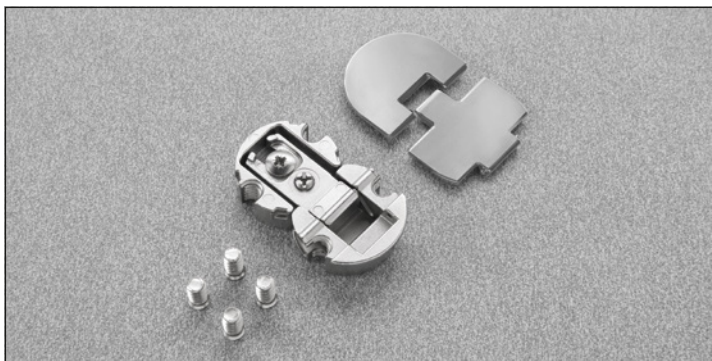
**FRCK59RXXXQ**

Glossy white



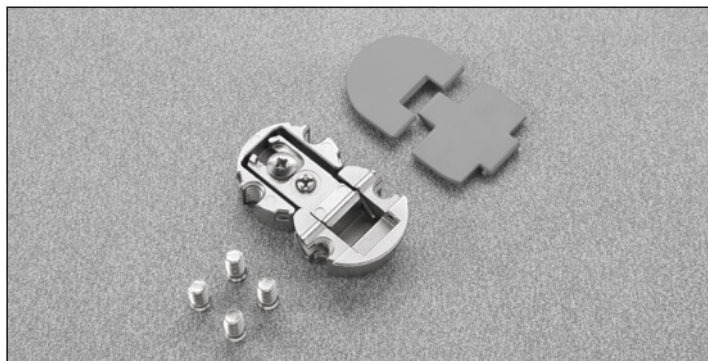
**FRCK59RXXXI**

Stainless steel



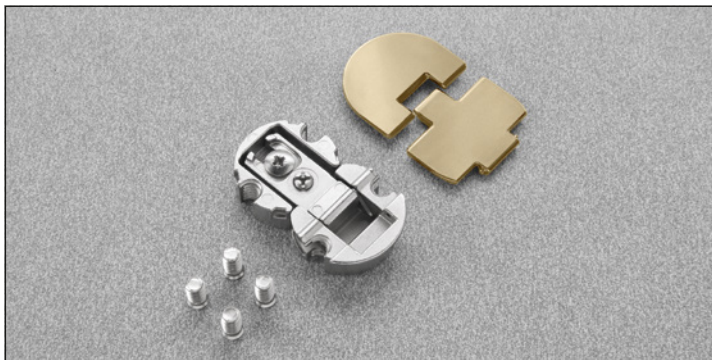
**FRCK59RXXXM**

Grey



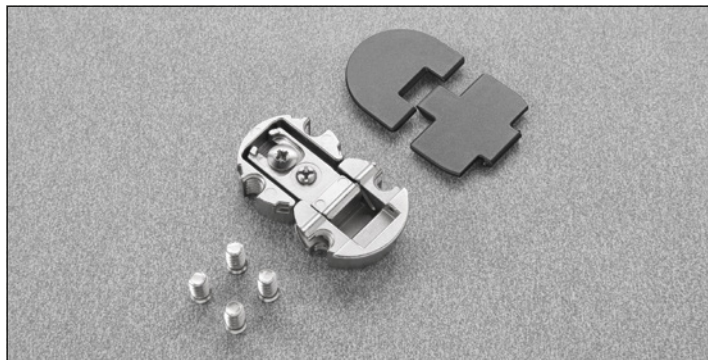
**FRCK59RXXXC**

Champagne



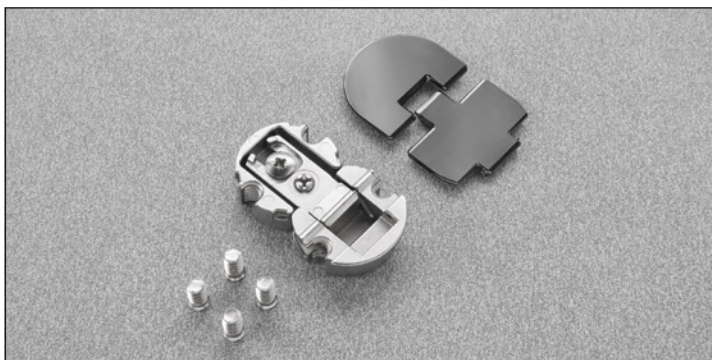
**FRCK59RXXX0**






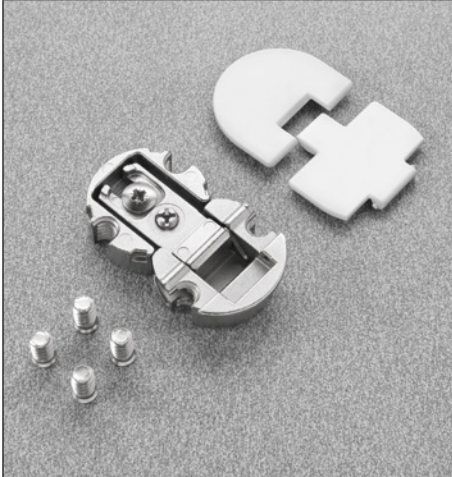

Satin metal black



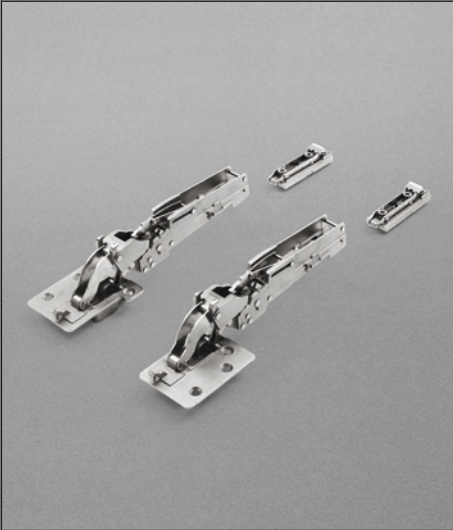






**FRCK59RXXXN**

Glossy metal black



Hinges	Part number	Kit Packaging
	<b>SPRUNG CLOSING ACTION</b>	<p><b>One box contains:</b></p> <ul style="list-style-type: none"> <li>2 hinges</li> <li>•</li> <li>2 mounting plates</li> <li>•</li> <li>2 Smove</li> <li>•</li> <li>Attachment screws ø5 x 13 euro screw &amp; #6 x 1"</li> <li>Pozi drive wood screw.</li> </ul>
	<p>Nickel-plated finish</p> <p><b>FRBLFEX_SN9</b></p> <p>Smove decelerating strength  pages 22 and 23</p>	
	<b>PUSH OPENING</b>	
	<p>Nickel-plated finish</p> <p><b>FRBLFEP_SN9</b></p> <p>Smove decelerating strength  pages 22 and 23</p>	
Cover	Part number	Kit Packaging
	<p><b>SRXB78A_XXXNF</b></p> <p>Cover finish  Page 16</p>	2 covers
Center hinge	Part number	Kit Packaging
	<p><b>FRCK59RXXX_</b></p> <p>Cover cap finish  Page 17</p> <p>Suggested for cabinets wider than 900 mm</p>	<p><b>One box contains:</b></p> <ul style="list-style-type: none"> <li>1 hinge</li> <li>•</li> <li>1 cover cap for door</li> <li>•</li> <li>1 cover cap for cabinet</li> <li>•</li> <li>Attachment screws included ø5 x 13</li> </ul>



Hinges	Part number	Packaging
	SPRUNG CLOSING ACTION	One box contains:  2 hinges • 2 mounting plates • 2 Smove • Screws included
	Nickel-plated finish <b>FRBZFEX_SN9</b> Smove decelerating strength  pages 22 and 23	
	Titanium finish <b>FRBZFEX_SN6</b> Smove decelerating strength  pages 22 and 23	
	PUSH OPENING	
	Nickel-plated finish <b>FRBZFEP_SN9</b> Smove decelerating strength  pages 22 and 23	
	Titanium finish <b>FRBZFEP_SN6</b> Smove decelerating strength  pages 22 and 23	
Cover	Part number	Packaging
	<b>SRXB78A_XXXNF</b>  Cover finish  Page 16	2 covers

# Pacta

## Aluminum Profile



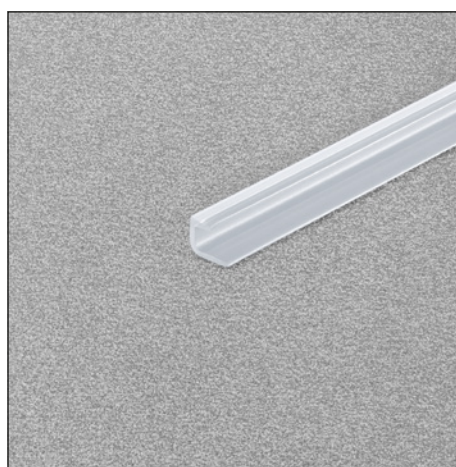
Corner connectors for profile assembly and hinge attachment

Part number	Description	Packaging
<b>DRZ4BSFV04</b>	For 48 mm aluminum frame	25 bags, each with 4 corner connectors and assembly nickel-plated and titanium screws



Aluminum door profile.

Part number	Packaging	Length
<b>DRZ4LP300P</b>	10 units in anodised aluminum	3 metres
<b>DRZ4LP300T</b>	10 units in Titanium finish	3 metres

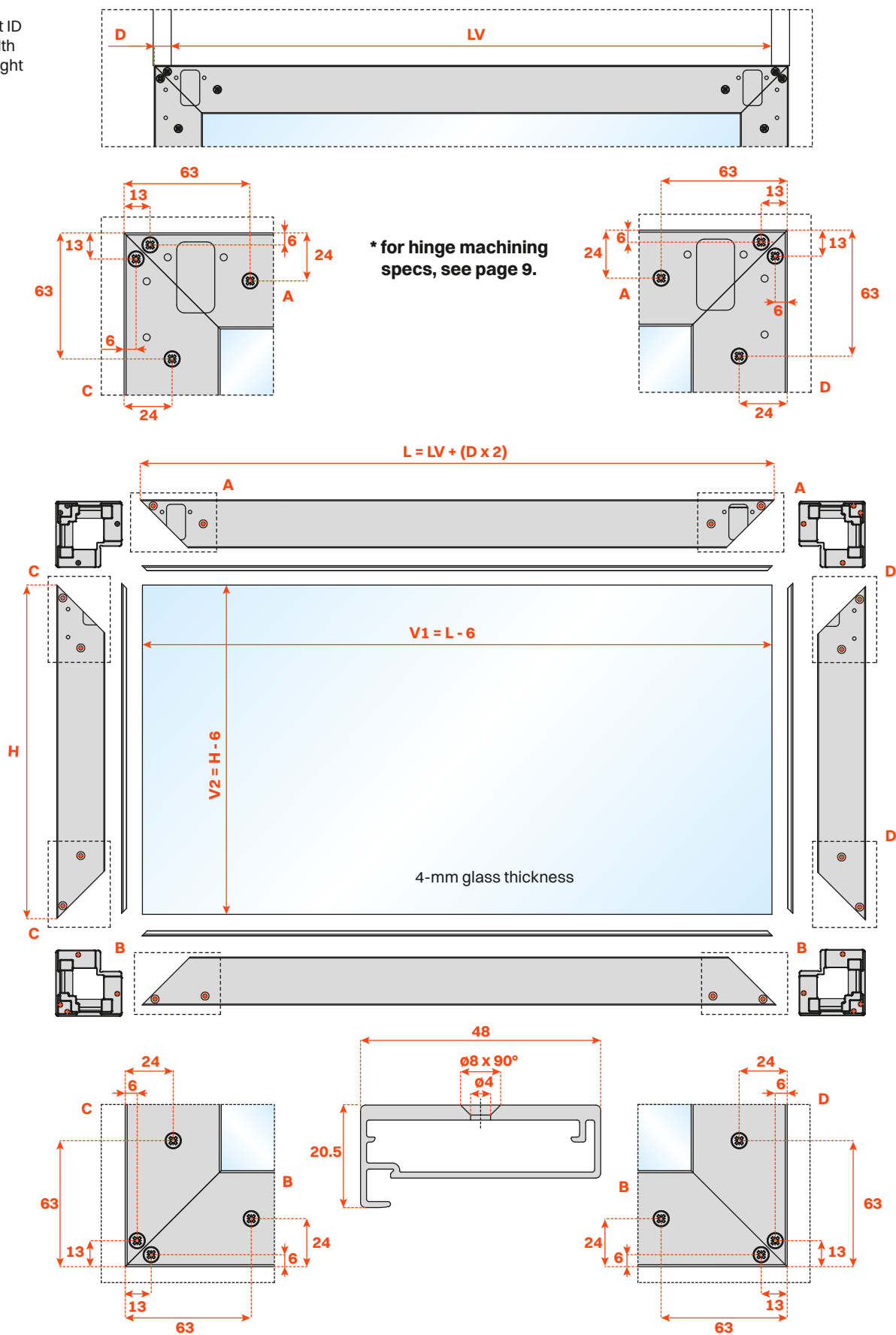


Gasket for 4-mm thick glass

Part number	Packaging	Length
<b>DRZXAG3000T</b>	100 gaskets	3 metres

## Aluminum profile assembly

D = overlay  
LV = cabinet ID  
L = door width  
H = door height



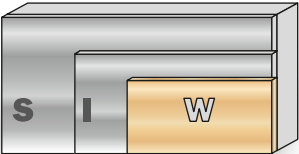
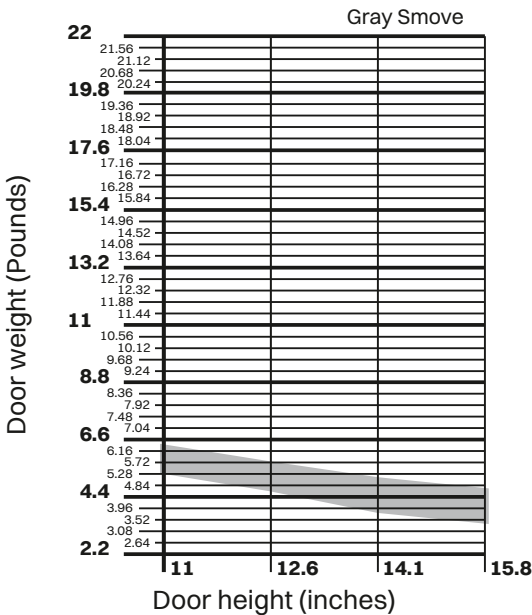


PACTA  
Door weight / Height Tables

Use the charts to determine the correct Smove based on the door height and the door weight. The maximum door width for two Pacta with a center hinge is 48" / 1200mm.

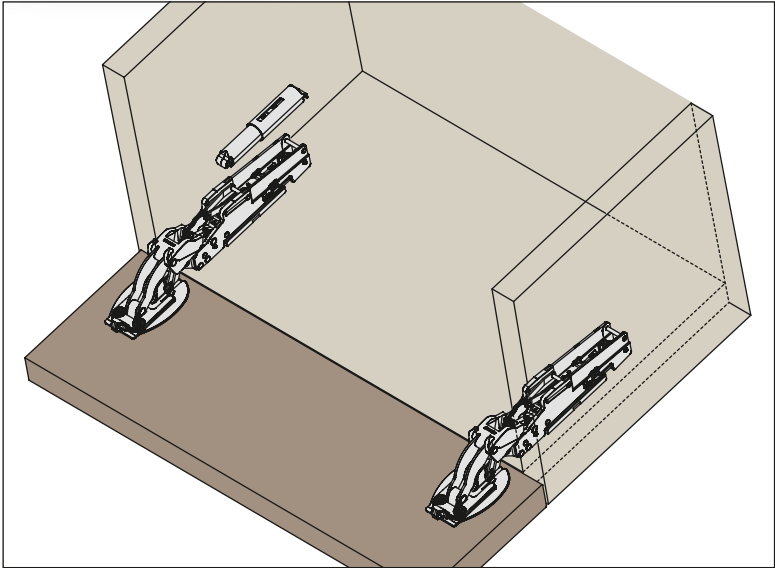
**Note:** Pacta can be used on doors that are larger or heavier by adding additional Pacta and center hinges to the cabinet and door. For all applications requiring more than two Pacta, this must be checked by Salice's technical department. Please consult with your local sales representative or contact technical service.

DRBWXXYXI

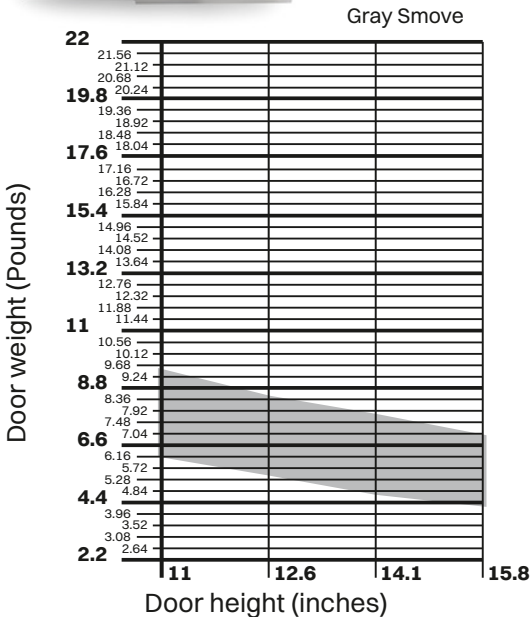


For doors made of light materials, one Smove may be sufficient.

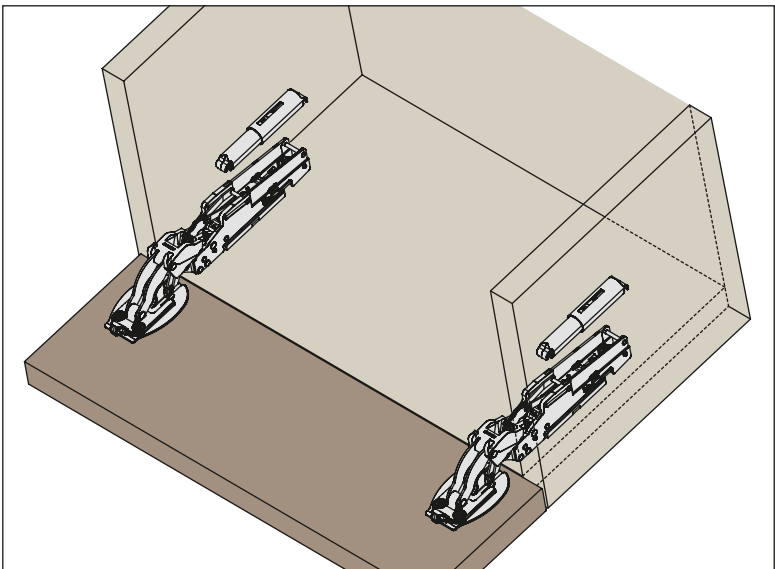
Min door height- 11"  
Max door height- 16"



DRBWXXYXI



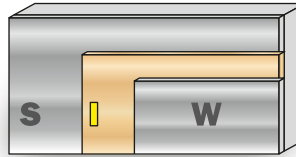
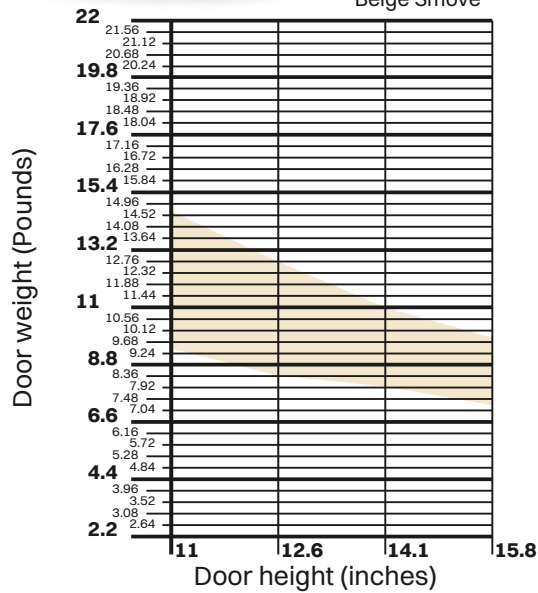
Min door height- 11"  
Max door height- 16"



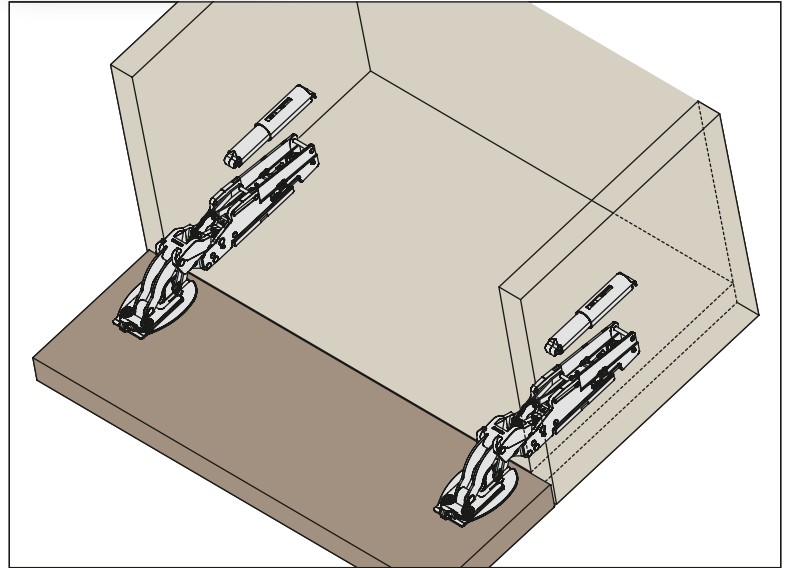
## DRB|XXYXI



Beige Smove



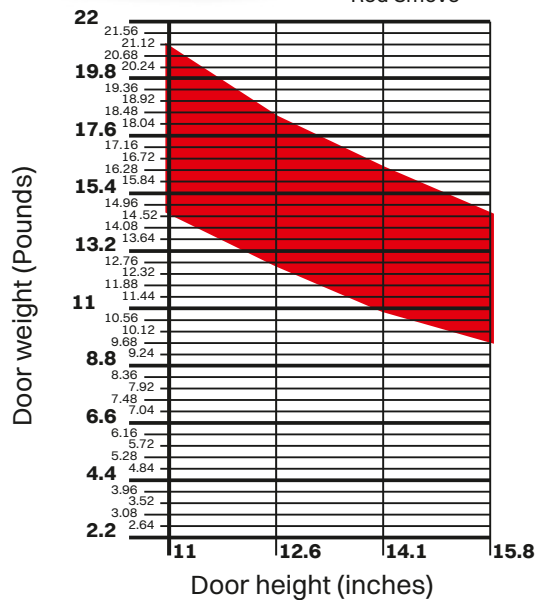
Min door height- 11"  
Max door height- 16"



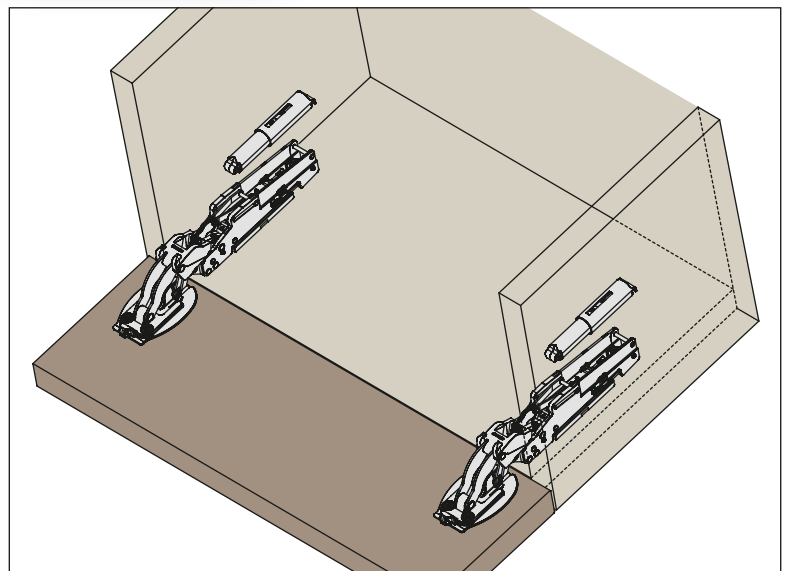
## DRBSXXYXI



Red Smove



Min door height- 11"  
Max door height- 16"









## *Magnetic Push*

# Magnetic Push

Release device and retaining catches

**DPMSNB** - beige



**DPMSNG** - grey



Release device.  
ø 10 mm, 40 mm length.

**Packing**

Box 250 pieces • Carton 1.500 pieces

**DPASNB** - beige



**DPASNG** - grey

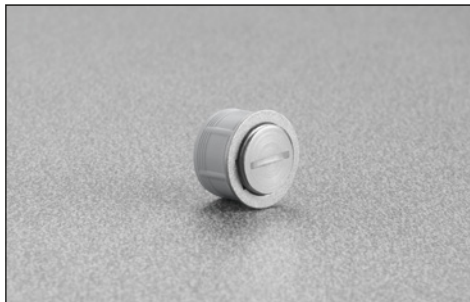


Magnetic device to be used to increase the magnetic holding strength. It must always be used together with the DPM. The suggested position of the DPM is the point of pressure on the door. The DPA can be positioned at any point along the opening edge of the door. ø 10 mm, 40 mm length.

**Packing**

Box 250 pieces • Carton 1.500 pieces

**DP39XXG**



Adjustable magnetic catch.  
Inserted into the door.  
ø 15 mm

**Packing** • Box 250 pieces

**DP28SN9**



Retaining catch to be inserted with pin.  
ø 11.5 mm surface.

**Packing** • Box 250 pieces

**DP38XX91**



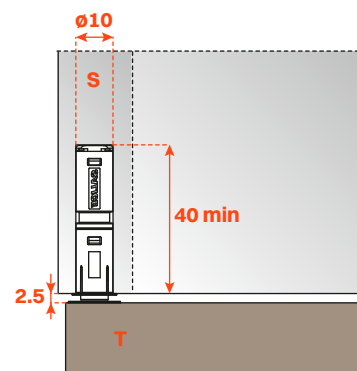
Retaining catch with adhesive.  
20x14 mm surface.  
For use with aluminum doors or smooth surfaces.

**Packing** • Box 250 pieces

## Release device application

### Release / Magnetic device to be inserted

Drill a hole  $\varnothing$  10 mm and min. 40 mm depth in the top, the side or the bottom panel of the cabinet.  
Insert the release device into the hole.

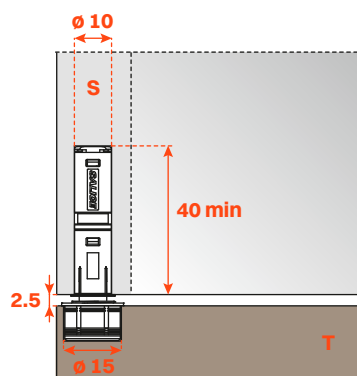
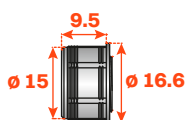


### Adjustable magnetic catch

The adjustable catch DP39 is itself magnetic and together with the magnetism of the release device DPM considerably increases the holding strength (30%) of the door against the cabinet side, thus avoiding accidental opening.

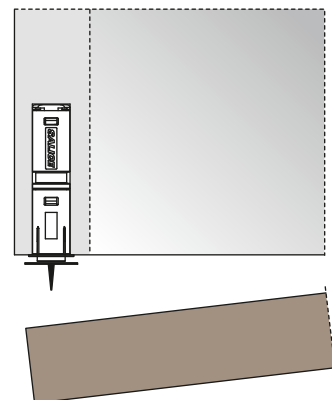
For the installation it is necessary to drill a hole  $\varnothing$  15 mm and 11 mm depth in the door.

Depth adjustment from +2.5mm / - 0.5mm



### Retaining catch to be inserted

Apply the retaining catch to the magnetic release device.  
Close the door.  
The point of the retaining catch will show where to insert it.  
Reopen the door and press the retaining catch.



### Retaining catch with adhesive strip

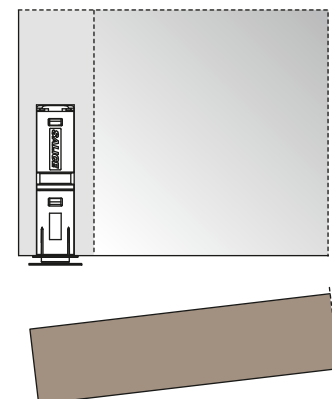
Apply the retaining catch to the magnetic release device. Remove the protective strip from the adhesive.  
Close the and the retaining catch is positioned on the door.  
Reopen the door and apply a firm pressure to the retaining catch to ensure a correct installation.

#### ATTENTION:

For a correct application and to ensure optimal endurance, we suggest these guidelines are followed:

- 1 - clean and degrease the door surface with alcohol where the retaining catch is to be installed;
- 2 - remove the protective strip from the adhesive;
- 3 - place the retaining catch in position, in a place that is at room temperature  $\geq 10^{\circ}$  ( $50^{\circ}\text{F}$ ) and apply a firm pressure for 10-15 seconds.

After few seconds from the installation the retaining catch is suitable for the use.  
After 24h the max. hold is attained.



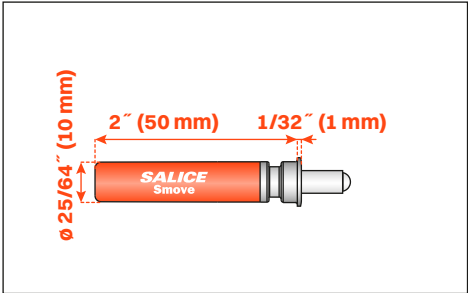


Smove

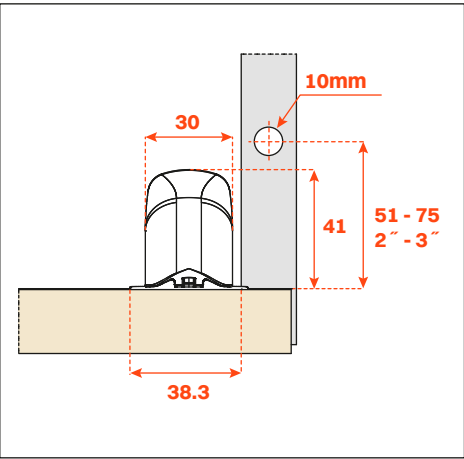
D007SN\_



Smove



Packing • Box 250 pieces



Smove D007SNG or D007SNB can be added to the cabinet for a soft close feature. For best function, install the Smove 2 - 3 inches from the bottom.

D2A7XCXCP



Pozi driver

Packing • Box 250 pieces



## HEADQUARTERS AND PRODUCTION UNITS

---

### ARTURO SALICE S.p.A.

#### HEAD OFFICE

VIA PROVINCIALE NOVEDRATESE, 10  
22060 NOVEDRATE (COMO) ITALIA  
TEL. 031 790424 - FAX 031 791508  
info.salice@salice.com  
www.salice.com

#### ARTURO SALICE S.p.A.

VIA ARISTIDE MERLONI, 11  
61036 COLLI AL METAURO (PU) ITALIA  
TEL. 0721 899800  
FAX 0721 897980  
info.salice@salice.com  
www.salice.com

#### BORTOLUZZI SISTEMI S.p.A.

VIA CADUTI 14 SETTEMBRE 1944, 45  
32100 BELLUNO (BL) ITALIA  
TEL. 0437 930866  
FAX 0437 931442  
info@bortoluzzi.com  
www.salice.com

#### NUOVA ATIM S.r.l.

VIA IV NOVEMBRE, 52  
20019 SETTIMO MILANESE (MI) ITALIA  
TEL. 02 33503203  
FAX 02 33516514  
info@atimspa.com  
www.atimspa.com

#### VILLES S.r.l.

VIA CASTOLDI, 6/8  
20090 TREZZANO SUL NAVIGLIO (MI) ITALIA  
TEL. +39 02 4452083  
FAX +39 02 4452838  
info@villes2000.com  
www.villes2000.com

## BRANCHES

---

#### DEUTSCHE SALICE GMBH

RUDOLF DIESEL STR. 10  
74382 NECKARWESTHEIM  
TEL. 07133 9807-0  
FAX. 07133 9807-16  
info.salice@deutschesalice.de  
www.salice.com

#### DEUTSCHE SALICE GMBH

VERKAUFSBÜRO NORD  
RINGSTRASSE 36/A30 CENTER  
32584 LÖHNE  
TEL. 05731 15608-0  
FAX. 05731 15608-10  
vknord@deutschesalice.de  
www.salice.com

#### SALICE UK LTD.

KINGFISHER WAY  
HINCHINGBROOKE BUSINESS PARK  
HUNTINGDON CAMBS PE 29 6FN  
TEL. 01480 413831  
FAX. 01480 451489  
info.salice@saliceuk.co.uk  
www.salice.com

#### SALICE FRANCE S.A.R.L.

285 RUE DE GOA ZAC LES 3 MOULINS  
06600 ANTIBES  
TEL. 0493 330069  
FAX. 0493 330141  
info.salice@salicefrance.com  
www.salice.com

#### SALICE ESPAÑA, S.L.U.

C/ AIGUAFREDA 4, P.I. AMETLLA PARK  
08480 L'AMETLLA DEL VALLÈS (BARCELONA)  
TEL. 0034 938 46 88 61  
info.salice@saliceespana.es  
www.salice.com

#### SALICE PORTUGAL UNIP. LDA

##### SHOWROOM:

TV SÁ E MELO 161 FA  
4470-116 MAIA - PORTO  
TEL: 00351 224 154 221  
Info@saliceportugal.pt  
www.salice.com

##### ARMAZÉM:

VIA ROTA DOS MÓVEIS I 399  
4585-325 GANDRA

#### SALICE CHINA (SHANGHAI) CO. LTD.

RM 602, 6/F, TOWER 1,  
3688 YINGGANG DONG ROAD  
QINGPU DISTRICT  
201703 SHANGHAI, CHINA  
TEL. 021 3988-9880  
info.salice@salicechina.com  
www.salicechina.com

#### SALICE INDIA PVT. LTD.

1001 & 1002, 10TH FLOOR,  
CENTRUM, PLOT NO. C-3,  
OPP. WAGLE PRABHAG SAMITI OFFICE,  
MIDC AREA, WAGLE INDUSTRIAL ESTATE,  
THANE - 400604, MAHARASHTRA  
TEL. 022 20812050  
info@saliceindia.com  
www.salice.com

#### SALICE CANADA INC.

3500 RIDGEWAY DRIVE,  
UNIT#1  
MISSISSAUGA, ONTARIO, L5L 0B4  
TEL. 905 820 8787  
FAX. 905 820 7226  
info.salice@salicecanada.com  
www.salicecanada.com

#### SALICE AMERICA INC.

2123 CROWN CENTRE DRIVE  
CHARLOTTE NC. 28227  
TEL. 704 841 7810  
FAX. 704 841 7808  
info.salice@saliceamerica.com  
www.saliceamerica.com





## **SALICE AMERICA INC.**

2123 CROWN CENTRE DRIVE  
CHARLOTTE NC. 28227  
TEL. 704 841 7810 - FAX. 704 841 7808

[info.salice@saliceamerica.com](mailto:info.salice@saliceamerica.com)  
[www.saliceamerica.com](http://www.saliceamerica.com)

## **SALICE CANADA INC.**

3500 RIDGEWAY DRIVE, UNIT #1  
MISSISSAUGA, ONTARIO, L5L 0B4  
TEL. 905 820 8787 - FAX. 905 820 7226

[info.salice@salicecanada.com](mailto:info.salice@salicecanada.com)  
[www.salicecanada.com](http://www.salicecanada.com)



**Digital contents**