



Push

SALICE

Index



Push *Self-opening system for handle-less doors*

Mechanical Push	page 6
Retaining catches for wooden doors	page 10
Retaining catches for aluminium-frame doors	page 11
Adapters	page 12
Spacers and insertion tool for retaining catch	page 13
Assembly instructions and drillings	page 14
Magnetic Push	page 18
Adapters	page 19
Magnetic release device and retaining catch application	page 20
Adjustable magnetic retaining catch application	page 23



Series 200

Technical features	page 26
94° opening for thicker doors	page 28
110° opening	page 30
155° opening for thicker doors	page 32
Complementary hinges: for wooden doors with positive angled assembly crampon hinges	page 34 page 36



For metal profiles

Series 200	
105° opening	page 40
Complementary hinges	page 41
Crampon hinges	page 42



Series B *Hinges that need to be bonded to glass*

For glass doors	
Technical features	page 44
110° opening	page 45

Series B *Hinges for doors with a minimum thickness of 8 mm*

Doors made with special materials	
Technical features	page 46
110° opening	page 47

Series B *Hinges for half-inset doors or doors with moulded profiles*

For wooden doors	
Technical features	page 48
110° opening	page 50



Accessories

Screw cover caps	page 54
Flange cover caps	page 54
Spacer for Series 200 hinges	page 54
Stop devices	page 55



Mechanical Push

Mechanical Push

The PUSH-System is a self-opening system for the doors of all types of handleless furniture.

It consists of a series of self-opening hinges, release devices that can be fitted to the top, base or side panel of the cabinet, and retaining catches to be fitted to the back of the door.

The retaining catches can be pressure-fixed or screw-fixed.

For doors over 1600 mm in height, we suggest that you use two mechanical release catches.

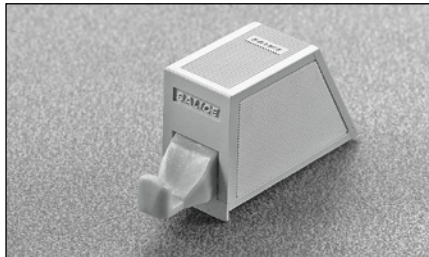


With adhesive strip

DP1SNB - beige



DP1SNG - grey



With assembly stop device.

Packing
Boxes 300 pcs.

Installation of mechanical Push with adhesive strip

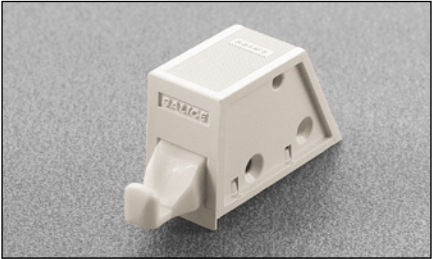
For correct application and to ensure optimal endurance, please follow the following procedure:

- 1)** clean and degrease the cabinet surface where the release device is to be installed using an acetone based cleaner;
- 2)** remove the protective strip from the adhesive;
- 3)** place the release device in position and apply a firm pressure for about one minute;
- 4)** allow a period of 12 hours to elapse before subjecting the PUSH-System to continuous usage.

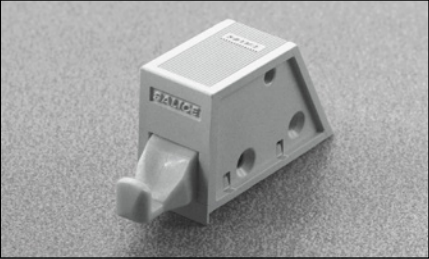


Mechanical Push - To be screw-fixed

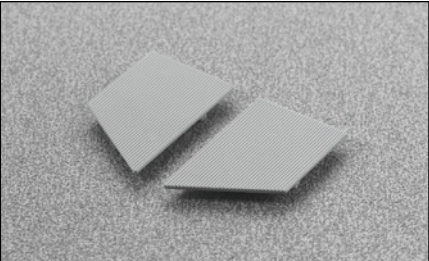
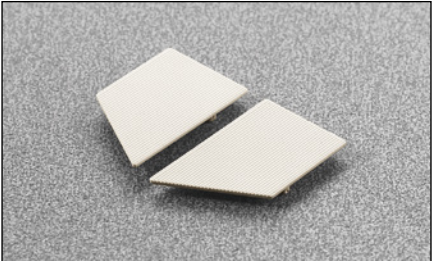
DP3SNB - beige



DP3SNG - grey

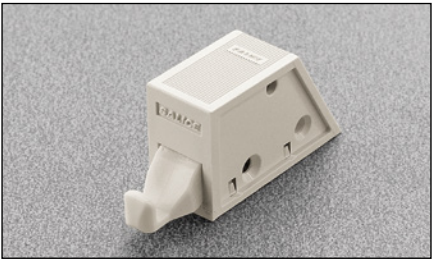


With assembly stop device.

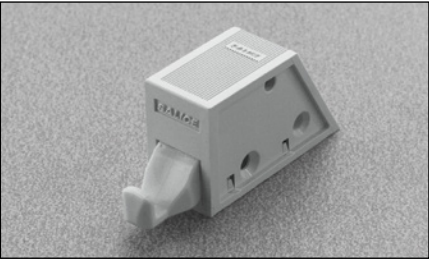


Packing
Boxes 300 pcs.

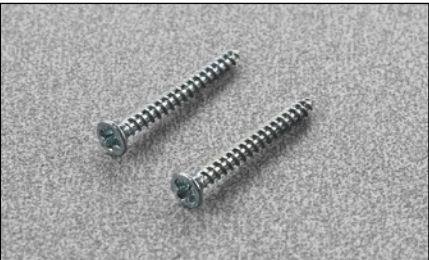
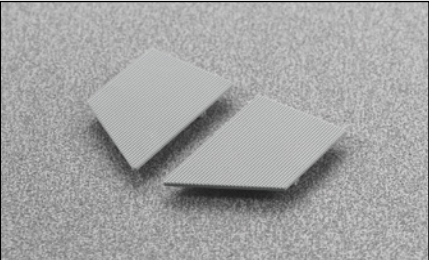
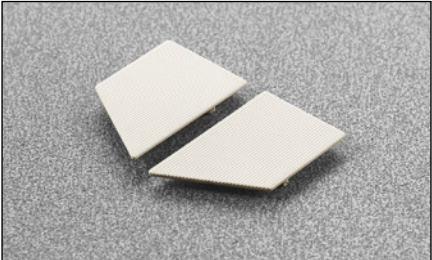
DP3SNBR - beige



DP3SNGR - grey



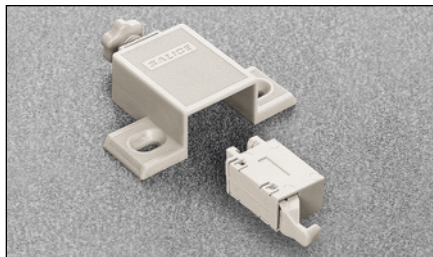
Without assembly stop device.



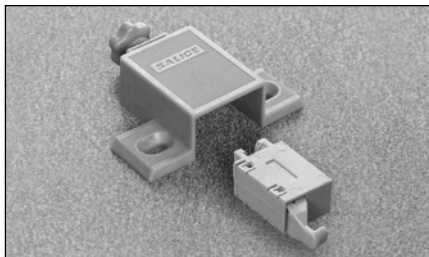
Packing
Boxes 300 pcs.

With adjustment

DP4SNB - beige



DP4SNG - grey

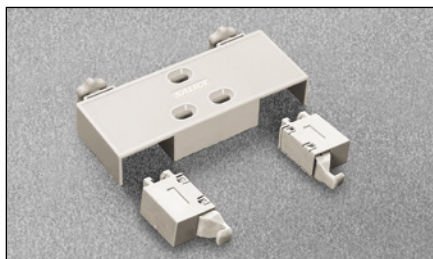


Single adapter with depth and sideways adjustment and release device. Without assembly stop device.

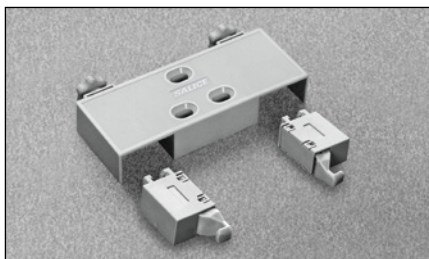
Packing

Boxes 300 pcs.

DP5SNB - beige



DP5SNG - grey



Double adapter with depth and sideways adjustment and release devices. Without assembly stop device.

Packing

Boxes 150 pcs.

N.B.: Drilling patterns at page 14.

Technical information on the adjustable mechanical Push

The adjustable Push consists of a release device and a screw-fixed adapter which have been developed to improve the locating action of the system.

The adjustable Push now has a depth adjustment facility with a range of -1 mm to + 2.5 mm which is controlled by a small adjuster wheel located at the back of the adapter.

In addition, the adapter has a sideways adjustment facility of ± 2 mm.

This is achieved by loosening the two fixing screws and adjusting the position of the adapter using the elongated holes.

Finally, the screws must be retightened.



Mechanical Push - Retaining catches for wooden doors

DP29SNB - beige



DP29SNG - grey



Retaining catch for wooden door.
Knock-in.

Packing
Boxes 300 pcs.

DP29SNBMC - beige



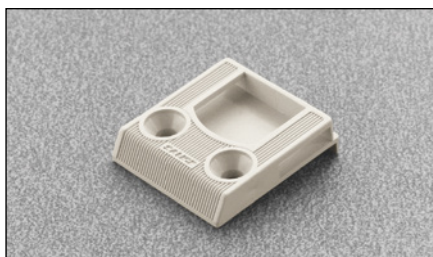
DP29SNGMC - grey



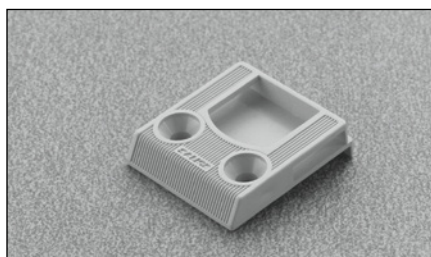
Retaining catch for wooden door and special
assemblies.
Knock-in.

Packing
Boxes 300 pcs.

DP29SNBI - beige



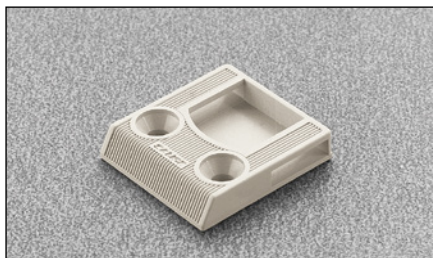
DP29SNGI - grey



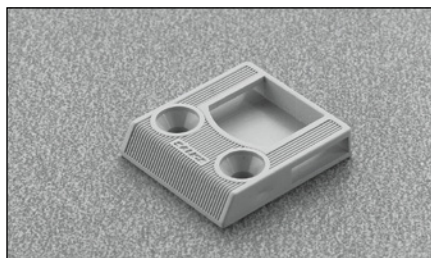
Retaining catch for wooden door.
With assembly stop device.
Screw-on.

Packing
Boxes 300 pcs.

DP29SNBR - beige



DP29SNGR - grey



Retaining catch for wooden door.
Without assembly stop device.
Screw-on.

Packing
Boxes 300 pcs.

N.B.: Drilling patterns at page 15.

Retaining catches for aluminium-frame doors

DP29SNBA - beige



DP29SNGA - grey



Retaining catch for aluminium-frame door
width = 35 - 45 mm.

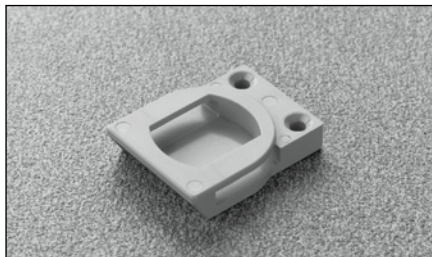
Packing

Boxes 300 pcs.

DP29SNBB - beige



DP29SNGB grey



Retaining catch for aluminium-frame door
width = 17 - 35 mm.

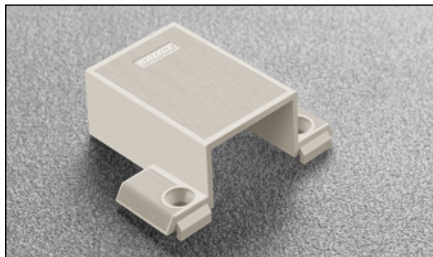
Packing

Boxes 300 pcs.

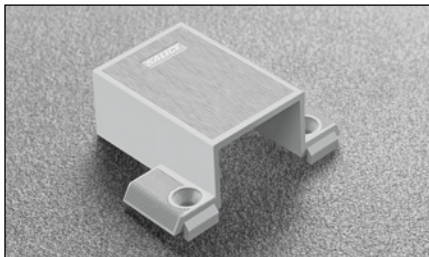
N.B.: Drilling patterns at pages 16

Mechanical Push - Adapters

DP52SNB - beige



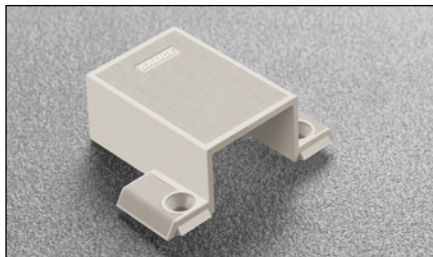
DP52SNG - grey



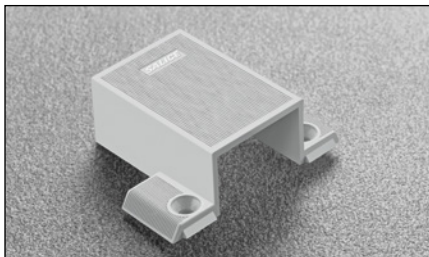
Single adapter.
6x40 mm drilling.
With assembly stop device.
DP53SN = single adapter with sideways adjustment.

Packing
Boxes 300 pcs.

DP52SNBR - beige



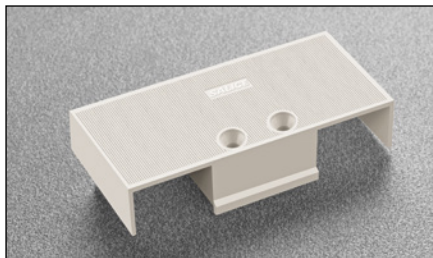
DP52SNGR - grey



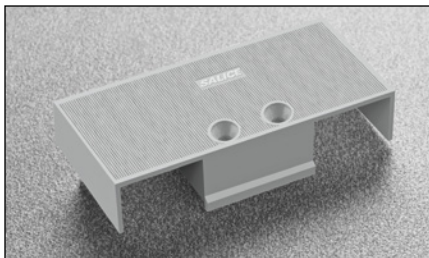
Single adapter.
6x40 mm drilling.
Without assembly stop device.
DP53SN_R = single adapter with sideways adjustment.

Packing
Boxes 300 pcs.

DP54SNB - beige



DP54SNG - grey



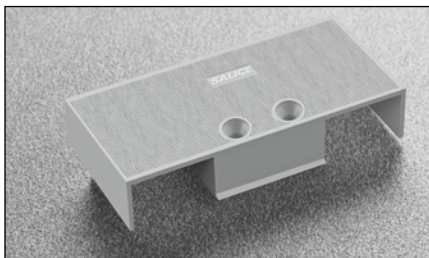
Double adapter.
6x16 mm drilling.
With assembly stop device.

Packing
Boxes 150 pcs.

DP54SNBR - beige



DP54SNGR - grey

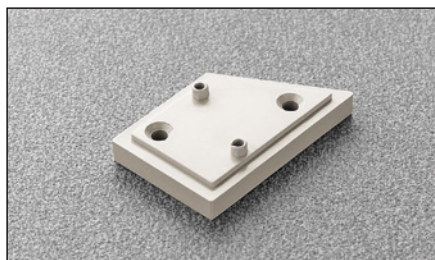


Double adapter.
6x16 mm drilling.
Without assembly stop device.

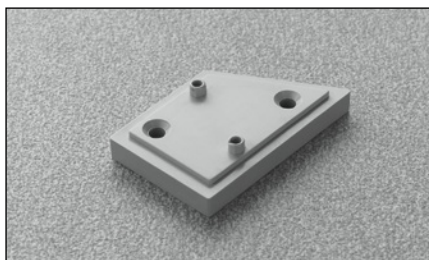
Packing
Boxes 150 pcs.

Spacers and insertion tool for retaining catches

DP44XXBD - beige



DP44XXGD - grey

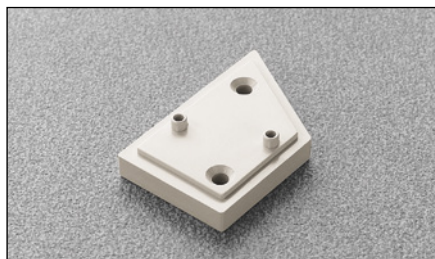


Right spacer H = 4.8 mm.

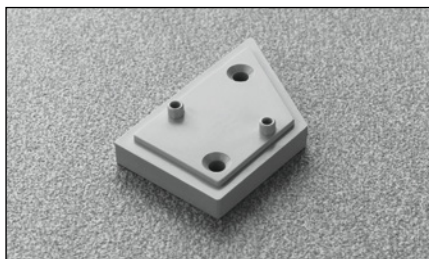
Packing

Boxes 300 pcs.

DP44XXBS - beige



DP44XXGS - grey



Left spacer H = 4.8 mm.

Packing

Boxes 300 pcs.

DP50SN0

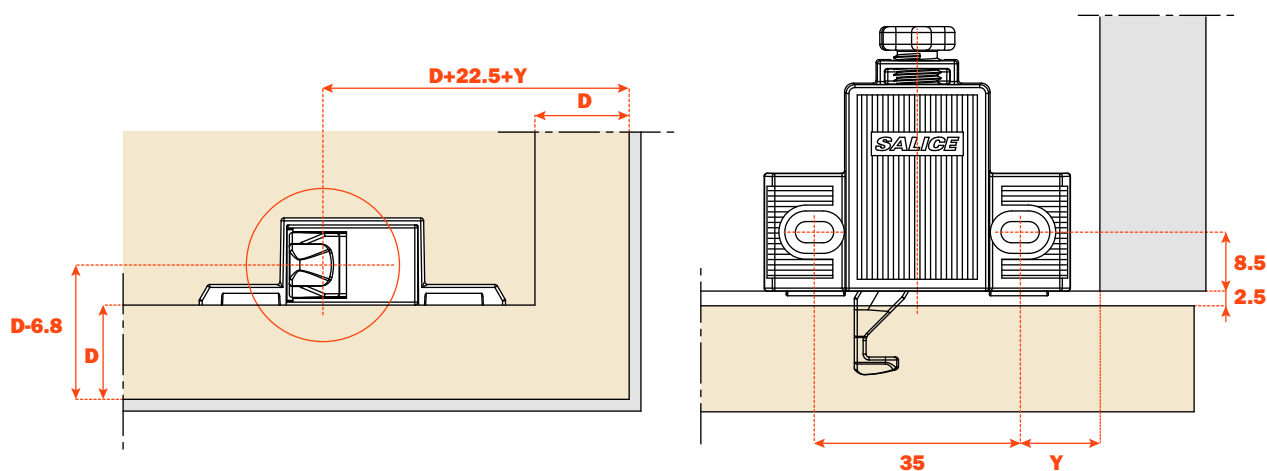


Orange insertion tool for retaining catch DP29SN_.



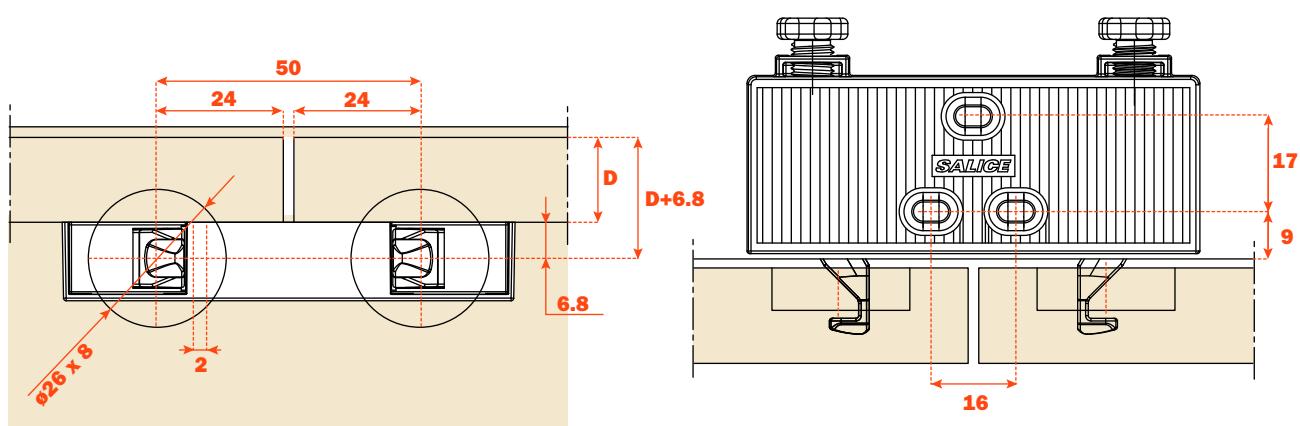
Mechanical Push - With adjustment

Push with depth and sideways adjustment



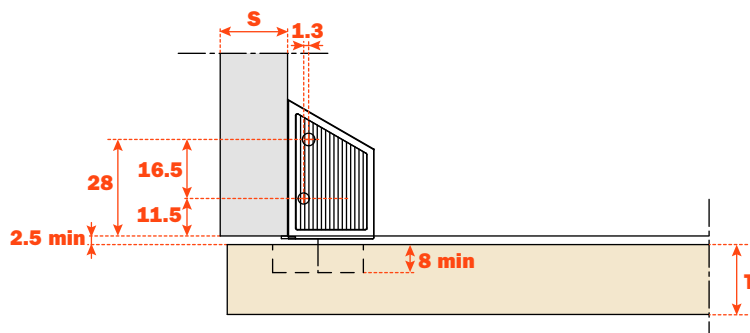
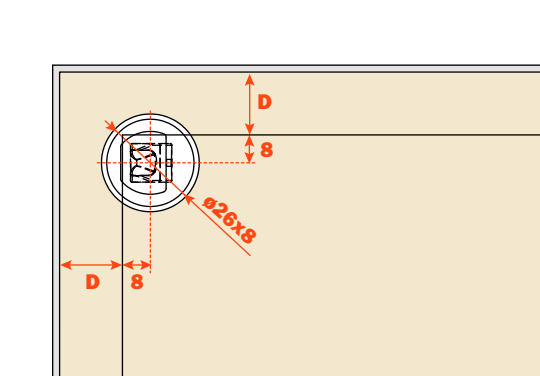
D = Door overlay on side and top of the cabinet
Y = min. 8.5 mm

Double Push with depth and sideways adjustment



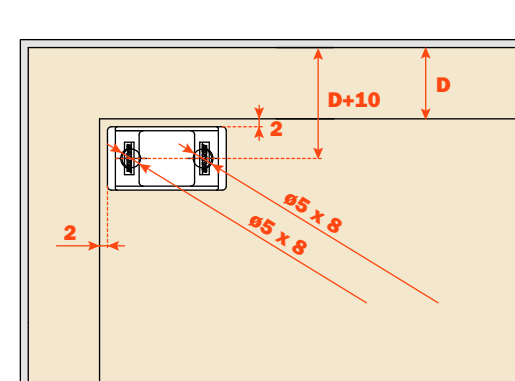
Drilling for wooden door

Fulloverlay door

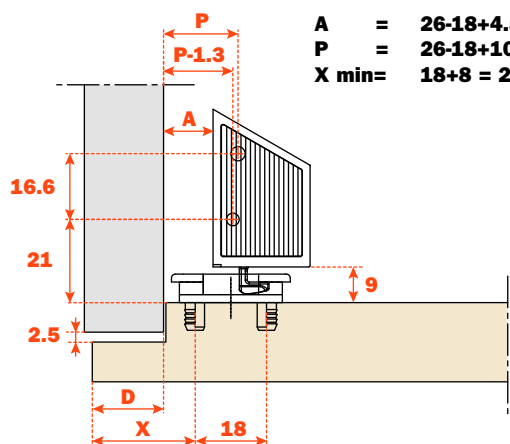


D = Door overlay on side and top of the cabinet
Drilling distance of retaining catch = **D + 8**

Special assemblies



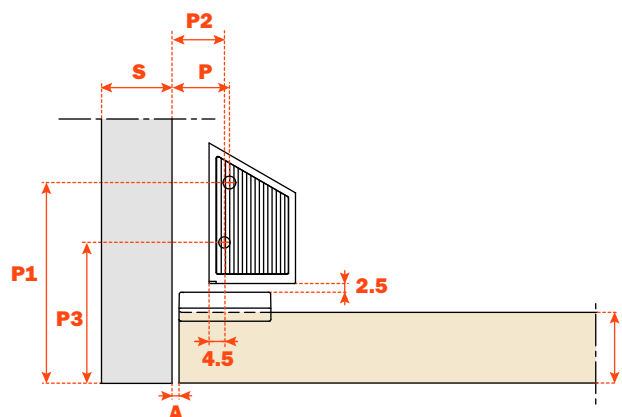
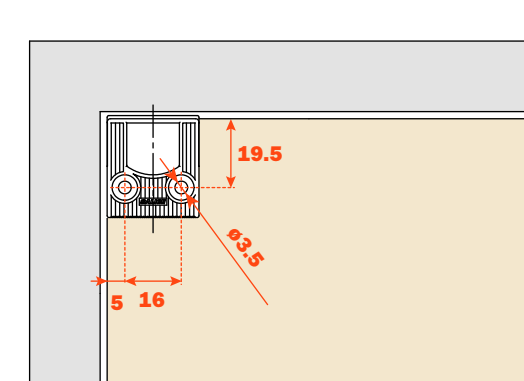
D = Door overlay on side and top of the cabinet



$$\begin{aligned} A &= X-D+4.5 \\ P &= X-D+10.8 \\ X \text{ min} &= D+8 \end{aligned}$$

$$\begin{aligned} A &= 26-18+4.5 = 12.5 \\ P &= 26-18+10.8 = 18.8 \\ X \text{ min} &= 18+8 = 26 \end{aligned}$$

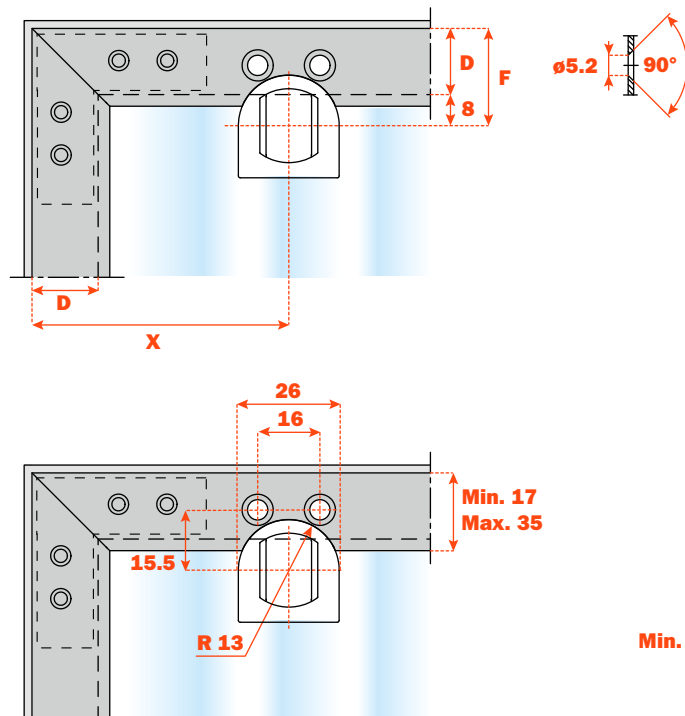
Inset door



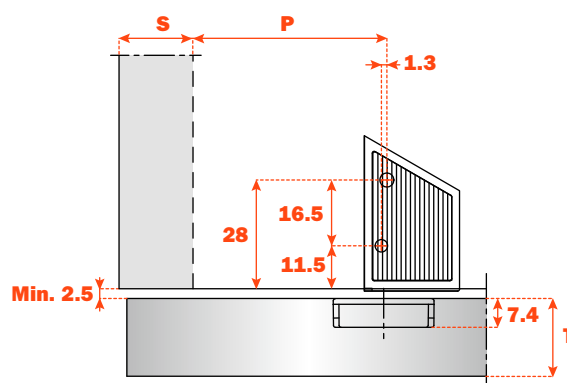
$$\begin{aligned} P &= 14.8 + A \\ P1 &= 36.8 + T \\ P2 &= P - 1.3 \\ P3 &= P1 - 16.5 \end{aligned}$$

Mechanical Push - Drilling for aluminium frame door

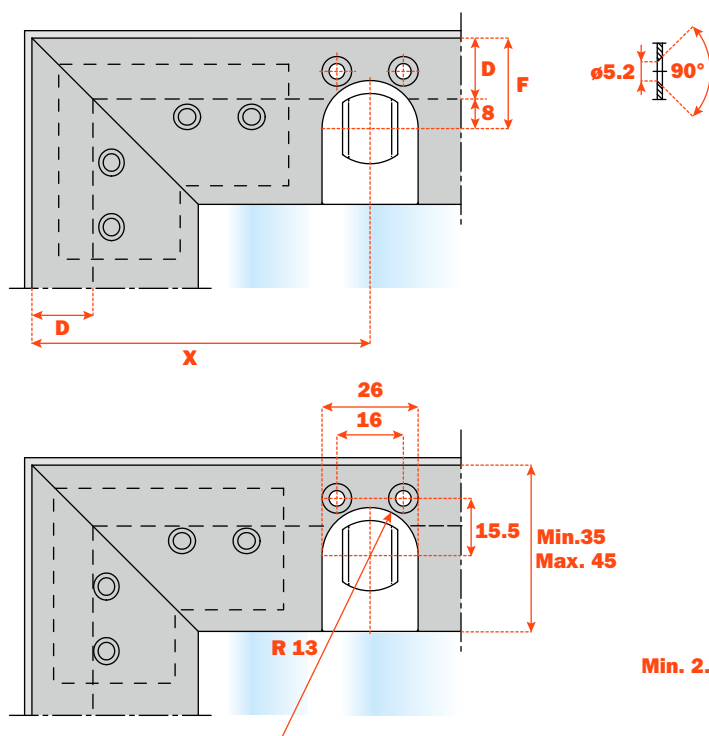
Profile min. 17 mm/max 35 mm



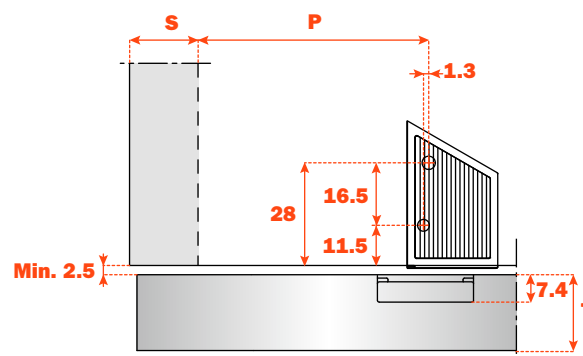
D = Door overlay on side and top of the cabinet
F = Drilling distance of retaining catch
 $= D + 8$
X = Relative to the distance to the corner of the profile
P = Fixing distance of PUSH = $X - D + 1.3$



Profile min. 35 mm/max. 45 mm



D = Door overlay on side and top of the cabinet
F = Drilling distance of retaining catch
 $= D + 8$
X = Relative to the distance to the corner of the profile
P = Fixing distance of PUSH = $X - D + 1.3$





Magnetic Push

Magnetic Push - Magnetic release devices and retaining catches

DPMSNB - beige



DPMSNG - grey



Release device.
ø 10 mm, 40 mm length.

Packing

Boxes 250 pcs.
Cartons 1.500 pcs.

DPASNB - beige



DPASNG - grey



Optional supplementary release device to increase the magnetic holding strength. It must always be used together with the DPM. The suggested position of the DPM is the point of pressure on the door. The DPA can be positioned at any point along the opening edge of the door. ø 10 mm, 40 mm length.

Packing

Boxes 250 pcs.
Cartons 1.500 pcs.

DP28SN9



Retaining catch to be inserted.
ø 11.5 mm.

Packing

Boxes 250 pcs.

DP38XX91

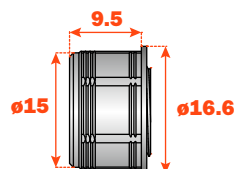


Retaining catch with adhesive.
20x14 mm.

Packing

Boxes 250 pcs.

DP39XXG

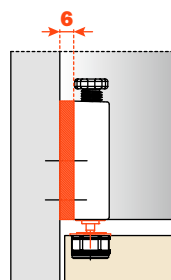


Adjustable magnetic retaining catch.
ø16.6 mm

Packing

Boxes 250 pcs.

SP44XX_



Spacer for inset door to be used together with DP82XX_R.

SP44XXG = grey
SP44XXB = beige

Packing

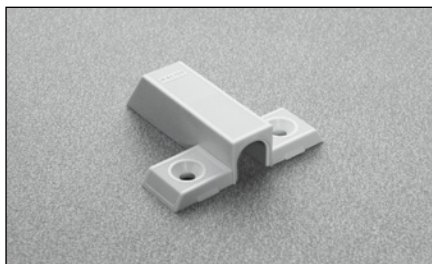
Boxes 250 pcs.

Adapters

DP80SNBR - beige



DP80SNGR - grey

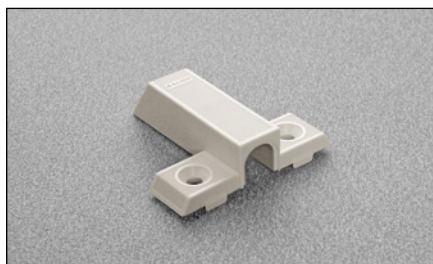


Plastic adapter for release device.
To be fixed with wood screws.
7.5x32 mm drilling.
Without assembly stop devices.
DP81SN_R = To be fixed with Euroscrews.

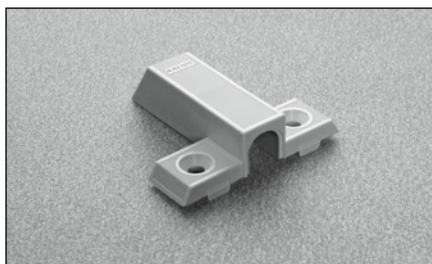
Packing

Boxes 500 pcs.
Pallets 12.000 pcs.

DP80SNB - beige



DP80SNG - grey



Plastic adapter for release device.
To be fixed with wood screws.
7.5x32 mm drilling.
With assembly stop devices.
DP81SN_ = To be fixed with Euroscrews.

Packing

Boxes 500 pcs.
Pallets 12.000 pcs.

DP82XXBR - beige



DP82XXGR - grey



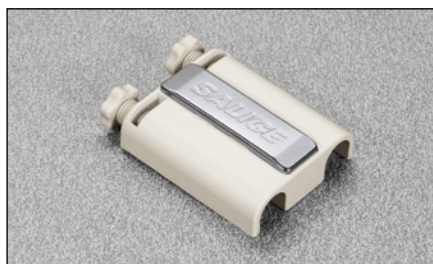
Adjustable longitudinal plastic adapter
for release device.
To be fixed with wood screws.
8+16 mm drilling.
Without assembly stop devices.

Caps to be ordered separately.

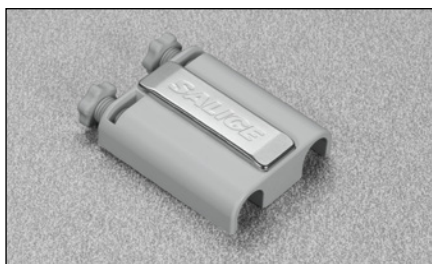
Packing

Boxes 500 pcs.
Pallets 12.000 pcs.

DP83XXBR - beige



DP83XXGR - grey



Adjustable double plastic adapter for
release device.
To be fixed with wood screws.
8+32 mm drilling.
Without assembly stop devices.

Cover caps to be ordered separately.

Packing

Boxes 500 pcs.
Pallets 12.000 pcs.

DP84SNBR - beige



DP84SNGR - grey

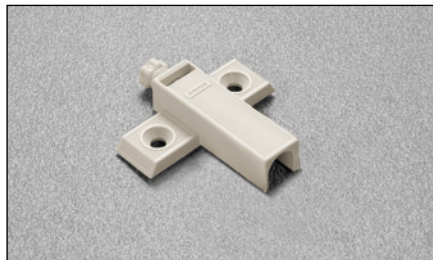


Adjustable plastic adapter for release device.
To be fixed with wood screws.
8x32 mm drilling.
Without assembly stop devices.

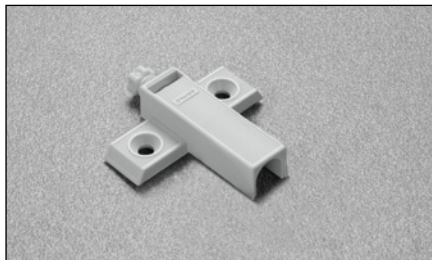
Packing

Boxes 500 pcs.
Pallets 12.000 pcs.

DP85SNBR - beige



DP85SNGR - grey



Adjustable plastic adapter for release device.
To be fixed with wood screws.
37x32 mm drilling.
Without assembly stop devices.

Packing

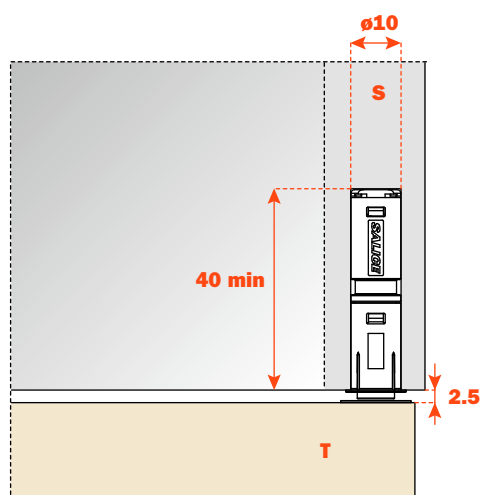
Boxes 500 pcs.
Pallets 12.000 pcs.

Magnetic Push - Magnetic release device application

Application of the release device to be recessed

Drill a hole \varnothing 10 mm and min. 40 mm depth in the top, the side or the base panel of the cabinet.

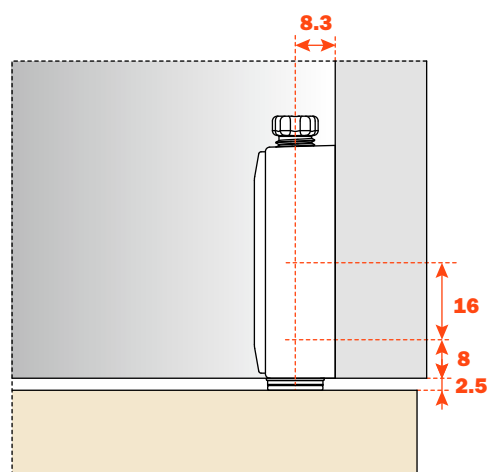
Insert the release device into the hole.



Release device application with adapter (DP82SN_R).

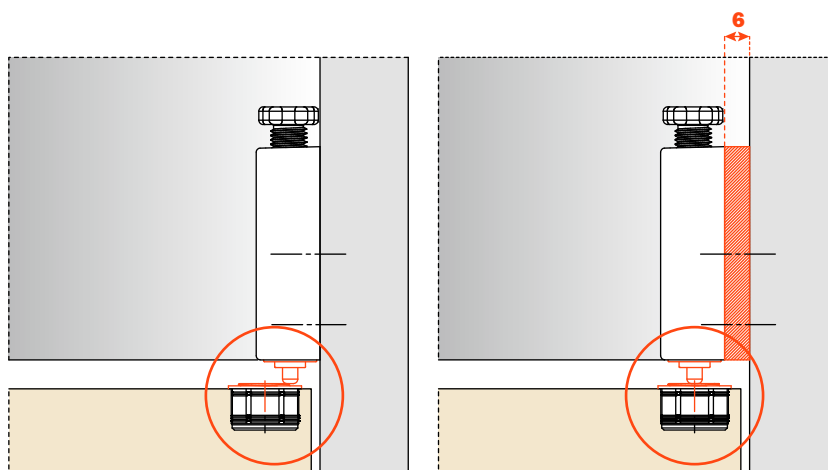
Insert the release device frontally into the adapter.

Place the adapter to the top, the side or the base panel of the cabinet, using the drilling value of 8+16 mm for final positioning.



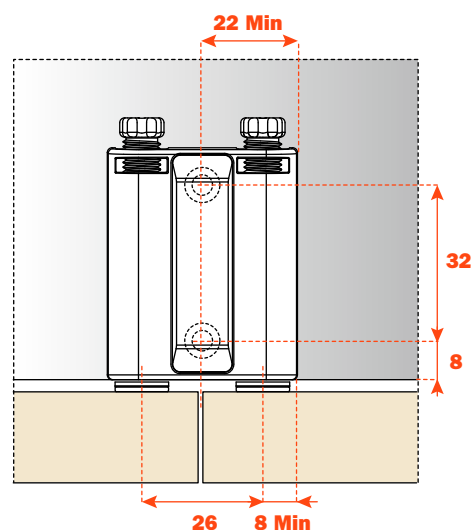
Release device application with spacer for inset doors (DP82SN_R + SP44XX_).

For inset doors it is essential to use the spacer SP44XX_.



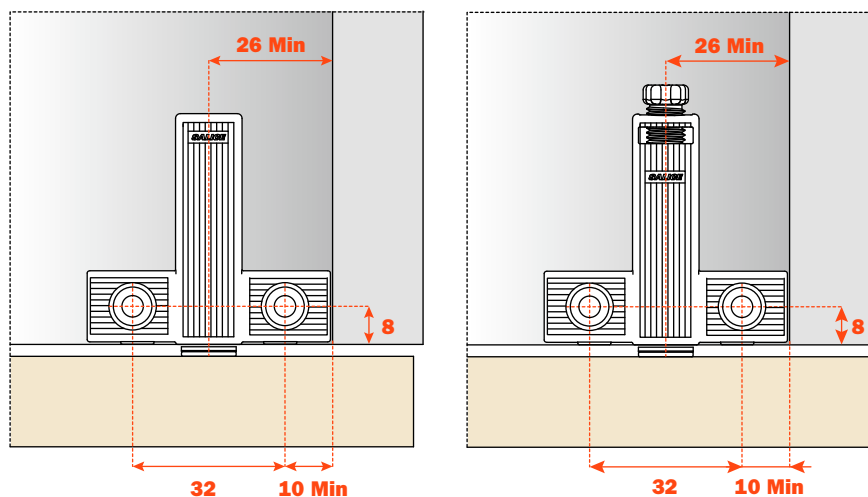
Release device application with adapter (DP83XX_R).

Insert the release device frontally into the adapter.
Place the adapter to the top, the side or the base panel of the cabinet, using the drilling value of 8+32 mm for final positioning.



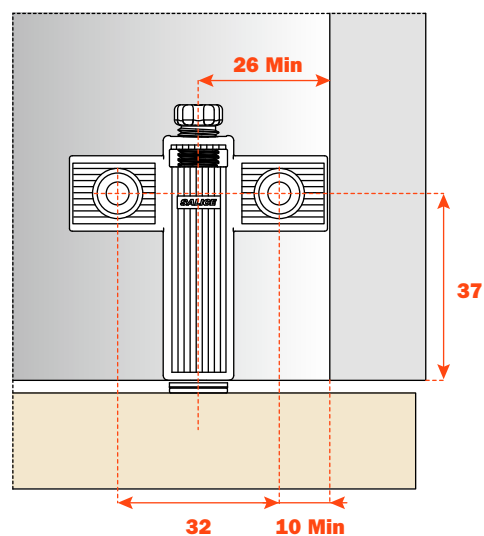
Release device application with adapter (DP80SN_ and DP84SN_R).

Insert the release device into the adapter.
Place the adapter to the top, the side or base panel of the cabinet, using the drilling value of 8x32 mm for final positioning.



Release device application with adapter (DP85SN_R).

Insert the release device into the adapter.
Place the adapter to the top, the side or base panel of the cabinet, using the drilling value of 37x32 mm for final positioning.



Magnetic Push - Retaining catch application

1 - Retaining catch with adhesive strip

Apply the retaining catch to the magnetic release device.

Remove the protective strip from the adhesive.

Close the door.

In this way the retaining catch is positioned on the door.

Reopen the door and apply a firm pressure to the retaining catch to ensure a correct installation.

ATTENTION:

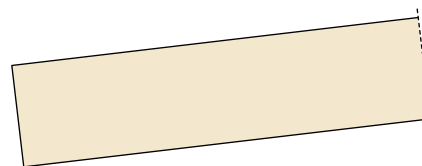
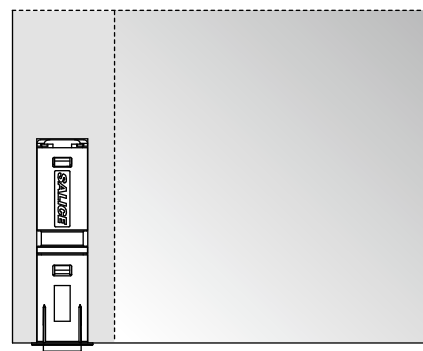
For a correct application and to ensure optimal endurance, we suggest these guidelines are followed:

1 - clean and degrease the door surface where the retaining catch is to be installed;

2 - remove the protective strip from the adhesive;

3 - place the retaining catch in position, in a place that is at room temperature $\geq 10^{\circ}$ and apply a firm pressure for 10-15 seconds.

After few seconds from the installation the retaining catch is suitable for the use. After 24h the max. hold is attained.



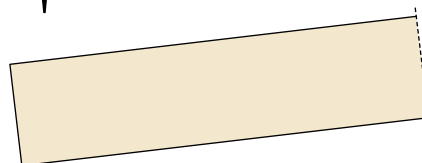
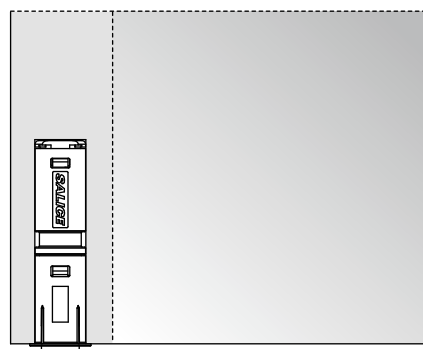
2 - Retaining catch to be inserted

Apply the retaining catch to the magnetic release device.

Close the door.

The point of the retaining catch will show where to insert it.

Reopen the door and press the retaining catch.



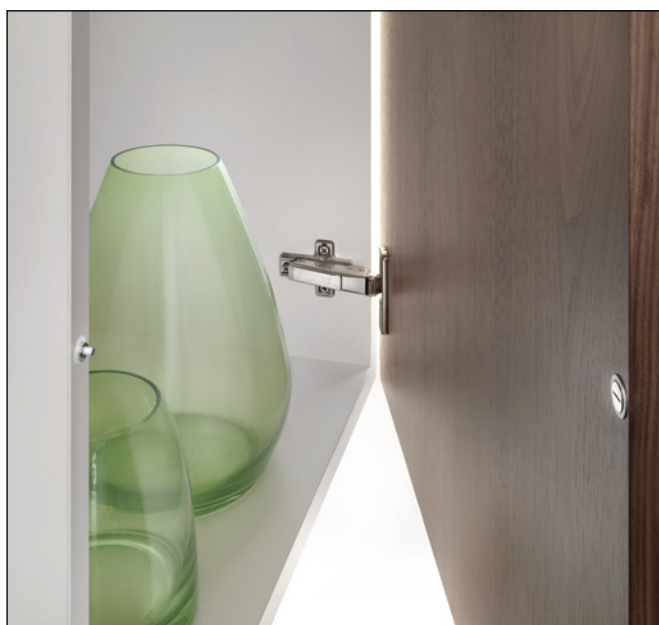
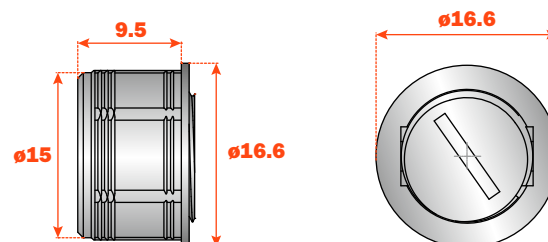
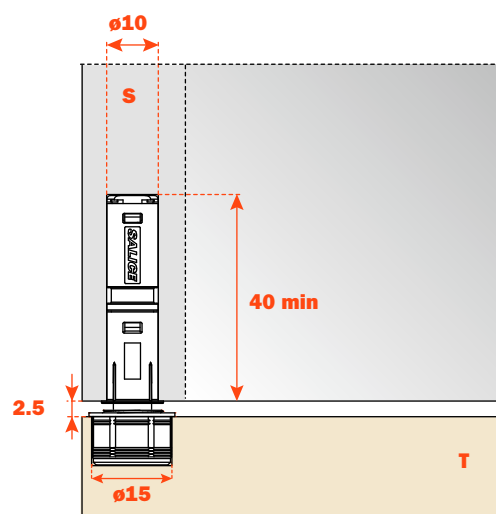
Adjustable magnetic retaining catch application

3 - Retaining catch to be inserted

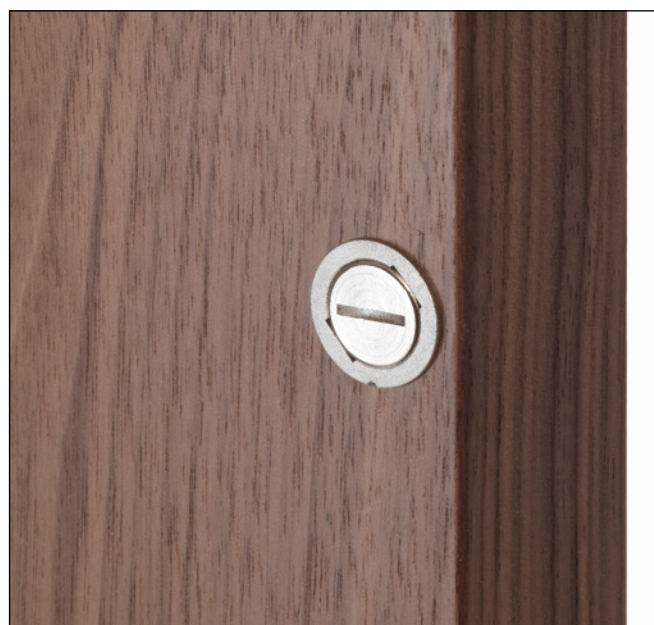
The retaining catch DP39 is itself magnetic and together with the magnetism of the release device DPM considerably increase (30%) the holding strength of the door against the cabinet side, thus avoiding accidental openings.

For the installation it is necessary to drill a hole $\varnothing 15$ mm and 11 mm depth in the door.

Depth adjustment from -0.5 mm to +2.5 mm.



Adjustment -0.5 mm



Adjustment +2.5 mm





Push - Series 200 hinges

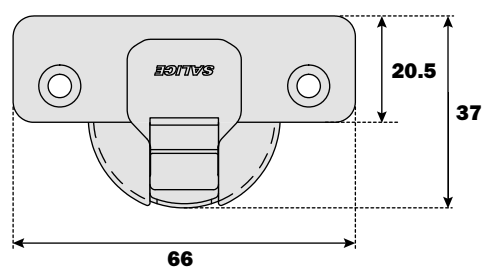
Push - Series 200 hinges

The Series 200 make up an integrated system of hinges developed to provide a solution to any situation involving concealed hinges.

Bright nickel plated steel cup and arm.

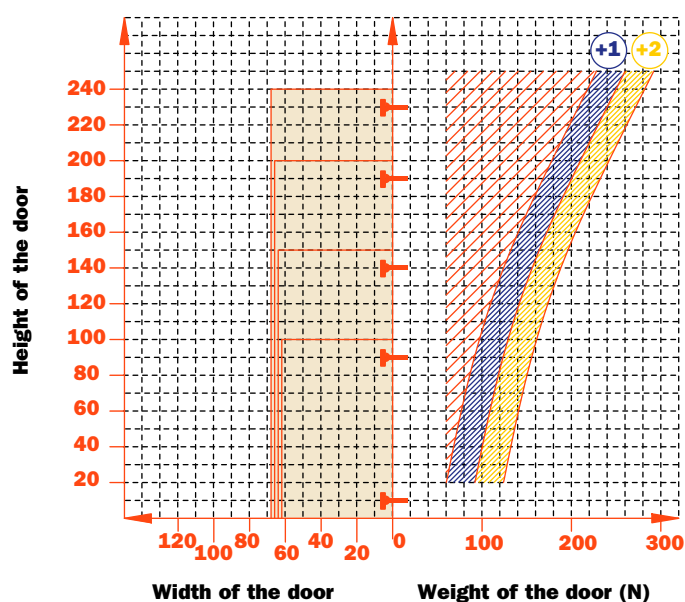
Dimensions of the \varnothing 35 mm cup.

Technical features



Constant "L" value of 0.7 mm (it does not change during side adjustment).

Approx. number of hinges required according to the door dimension and weight.



Adjustments

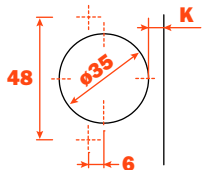
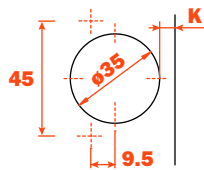
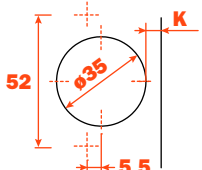

Compensating side adjustment from - 1.5 to + 4.5 mm.
Height adjustment \pm 2 mm.
Depth adjustment with Series 200 mounting plates + 2.8 mm.
Depth adjustment with Domi snap-on mounting plates from - 0.5 mm to + 2.8 mm.
Anti-sliding safety stop.

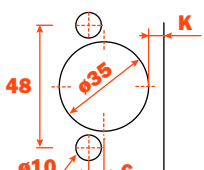
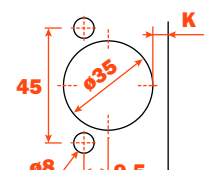
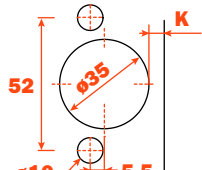


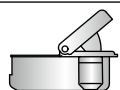
Mounting plates

Symmetrical and asymmetrical bright nickel plated steel or die-cast Series 200 mounting plates.
Snap-on assembly on Domi mounting plates.
Positioning with pre-determined stop on traditional Series 200 mounting plates.

N.B. : Use POZIDRIVE No. 2 screwdrivers for all screws.

Drillings and fixings

										
		94°	110°	155°	94°	110°	155°	94°	110°	155°
Wood screw		A	A	A	P	P	P	U	U	U

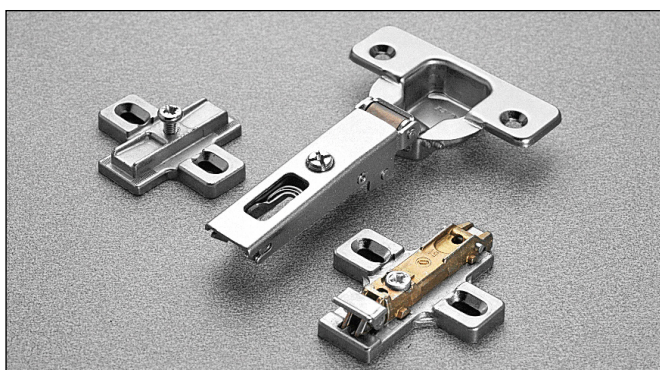
										
		94°	110°	155°	94°	110°	155°	94°	110°	155°
Rapido		6	6	6	7	7	7	2	2	2
Dowel		B	B	B	R	R	R	W	W	W
Logica		I	I	I	J	J	J	Q	Q	Q

Use this table to identify the available drillings and fixings.

Fill the third position of the hinge code number with the letter or the number corresponding to your choice. I.e.: C2_PA99.

↑
Fill this position with the chosen letter or number.

Push - Series 200 hinges - For thicker doors - 94° opening



Technical information

Push hinges are reverse-sprung so that the door self-opens when the release device is activated.

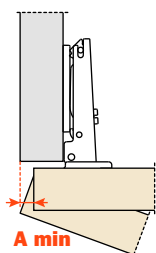
For thick doors up to 35 mm, with special profiles.

11 mm deep metal cup.

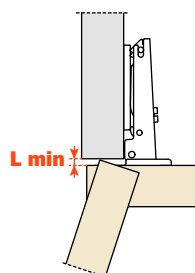
94° opening.

Possible drilling distance on the door (K): from 3 to 9 mm.
Compatible with all traditional Series 200 mounting plates and with all Domi snap-on mounting plates.

Space needed to open the door



T=	19	20	21	22	23	24	25	26	27	28	29	30	31	32	33	34	35
K=3 A=	0.1	0.2	0.3	0.4	0.5	0.7	0.8	1.0	1.6	2.6	3.5	4.5	5.4	6.4	7.4	8.3	9.3
K=4 A=	0.1	0.2	0.3	0.4	0.5	0.7	0.8	1.0	1.2	1.9	2.8	3.8	4.7	5.7	6.6	7.6	8.6
K=5 A=	0.1	0.2	0.3	0.4	0.5	0.7	0.8	1.0	1.2	1.4	2.2	3.1	4.1	5.0	5.9	6.9	7.8
K=6 A=	0.1	0.2	0.3	0.4	0.5	0.6	0.8	1.0	1.2	1.4	1.7	2.6	3.5	4.4	5.3	6.2	7.2
K=7 A=	0.1	0.2	0.3	0.4	0.5	0.6	0.8	1.0	1.1	1.3	1.6	2.1	3.0	3.8	4.7	5.6	6.5
K=8 A=	0.1	0.2	0.3	0.4	0.5	0.6	0.8	0.9	1.1	1.3	1.6	1.8	2.5	3.3	4.2	5.1	6.0
K=9 A=	0.1	0.2	0.3	0.4	0.5	0.6	0.8	0.9	1.1	1.3	1.5	1.8	2.1	2.9	3.7	4.6	5.4

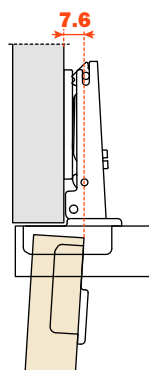


K=	3	4	5	6	7	8	9
L=	0.0	0.0	0.0	0.0	0.0	0.3	1.3

The above values are calculated on the assumption that the doors have square edges. They are reduced if the doors have radiussed edges.

Projection of the door

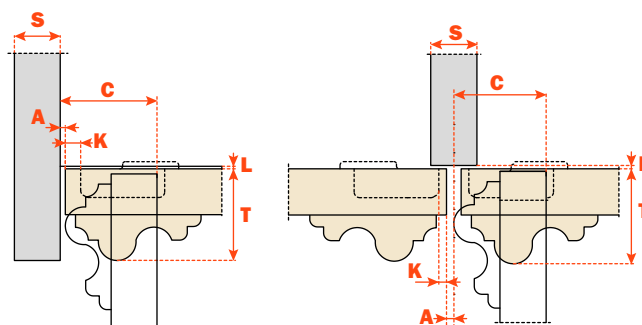
Projection of the door from the cabinet side at the max. opening. The figures are based on a straight arm hinge, H=0 mm thickness of mounting plate and K value = 3 mm.



"C" value

With this formula you can obtain the max. thickness of the moulded door that can be opened without touching adjacent carcass sides, doors or walls, whilst bearing in mind the above L-K-T values.

$$C = 23 + K + A$$

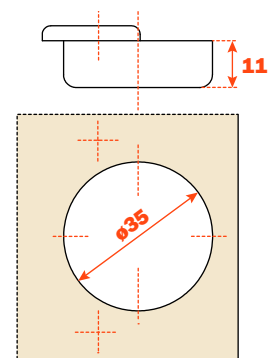


Packing

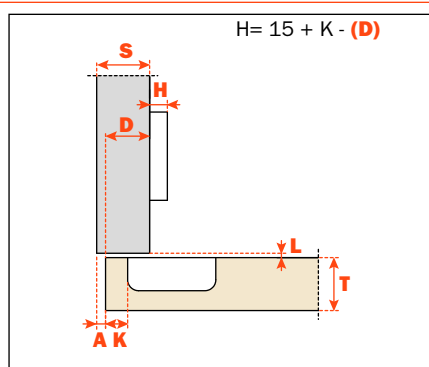
Boxes 300 pcs.
Pallets 7.200 pcs.

Use these formulas to determine the type of hinge arm, the drilling distance "K" and the height of the mounting plate "H" which is necessary to solve each application problem.

Use the tables "Drillings and fixings" at page 27 to complete the code number of the desired hinge.

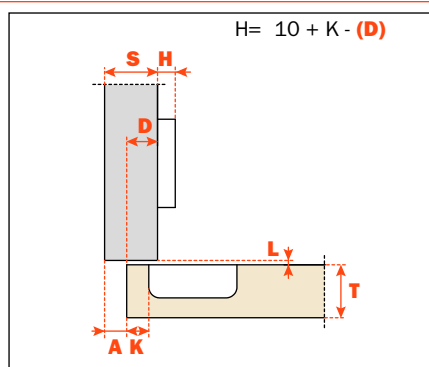


Arm 0



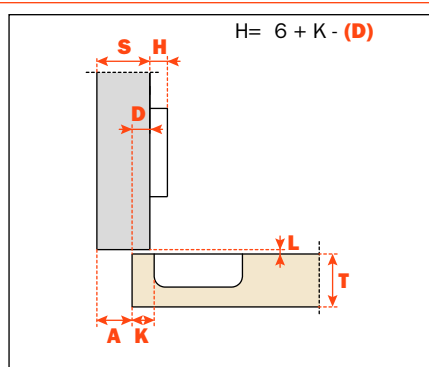
C2_VA99

Arm 5



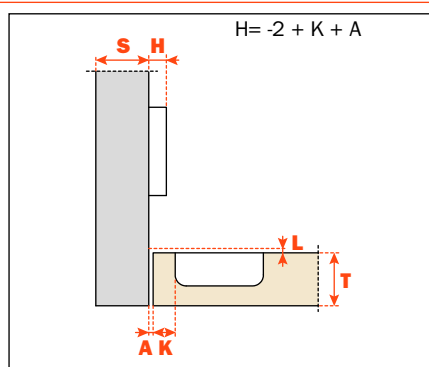
C2_VD99

Arm 9



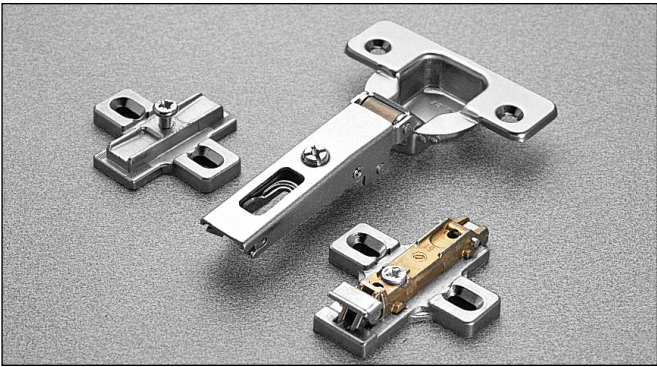
C2_VG99

Arm 17



C2_VP99

Push - Series 200 hinges - 110° opening

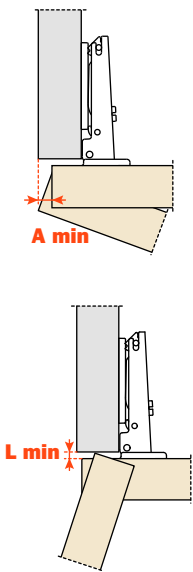


Technical information

Push hinges are reverse-sprung so that the door self-opens when the release device is activated.

When a greater opening angle is required.
11 mm deep metal cup.
110° opening.
Possible drilling distance on the door (K): from 3 to 6 mm.
Compatible with all traditional Series 200 mounting plates and with all Domi snap-on mounting plates.

Space needed to open the door



	T=	16	17	18	19	20	21	22	23	24	25	26
K=3	A=	0.5	0.7	0.9	1.2	1.5	1.8	2.4	3.7	5.1	6.5	7.8
K=4	A=	0.5	0.7	0.9	1.2	1.5	1.8	2.1	2.7	4.1	5.5	6.8
K=5	A=	0.5	0.7	0.9	1.2	1.5	1.8	2.1	2.6	3.1	4.1	5.4
K=6	A=	0.5	0.7	0.9	1.2	1.5	1.8	2.1	2.5	3.0	3.5	4.4

	T=	16	17	18	19	20	21	22	23	24	25	26
K=3	L=	0.0	0.0	0.0	0.0	0.2	0.5	0.8	1.1	1.4	1.7	1.9
K=4	L=	0.0	0.0	0.3	0.6	0.9	1.2	1.4	1.7	2.0	2.3	2.6
K=5	L=	1.1	1.3	1.6	1.8	2.1	2.3	2.6	2.9	3.1	3.4	3.6
K=6	L=	2.0	2.3	2.5	2.8	3.1	3.3	3.6	3.8	4.1	4.3	4.6

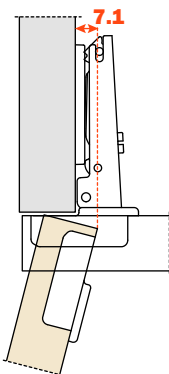
The above values are calculated on the assumption that the doors have square edges. They are reduced if the doors have radiussed edges.

Projection of the door

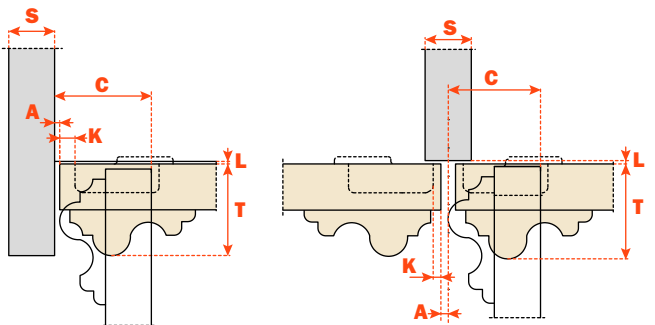
Projection of the door from the cabinet side at the max. opening. The figures are based on a straight arm hinge, H=0 mm thickness of mounting plate and K value = 3 mm.

“C” value

With this formula you can obtain the max. thickness of the moulded door that can be opened without touching adjacent carcase sides, doors or walls, whilst bearing in mind the above L-K-T values.



$C = 20 + K + A$

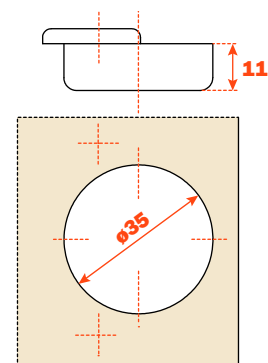


Packing

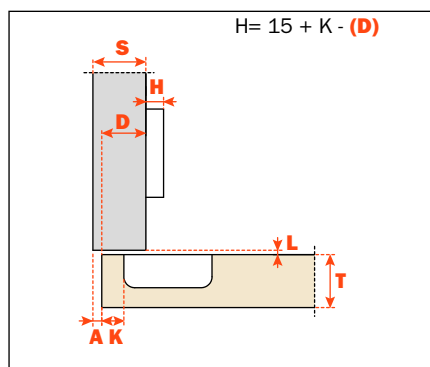
Boxes 300 pcs.
Pallets 7.200 pcs.

Use these formulas to determine the type of hinge arm, the drilling distance "K" and the height of the mounting plate "H" which is necessary to solve each application problem.

Use the tables "Drillings and fixings" at page 27 to complete the code number of the desired hinge.

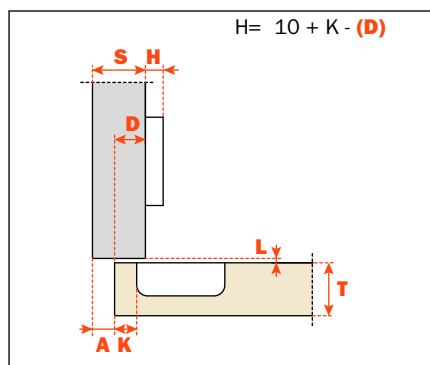


Arm 0



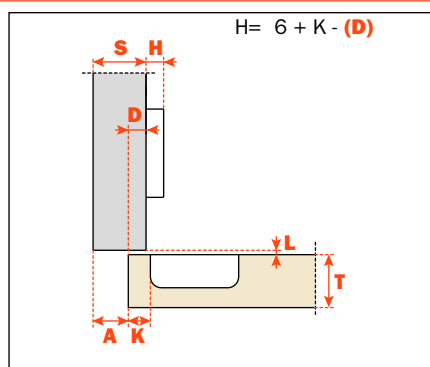
C2_PA99

Arm 5



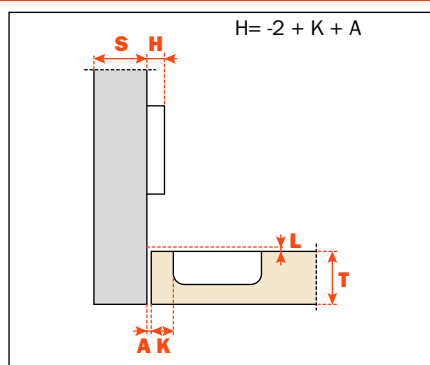
C2_PD99

Arm 9



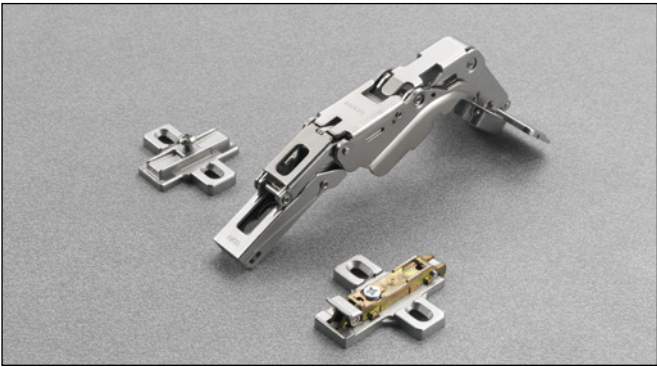
C2_PG99

Arm 17



C2_PP99

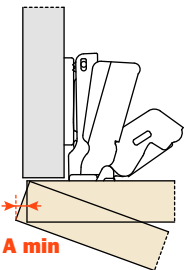
Push - Series 200 hinges - For thicker doors - 155° opening



Technical information

Push hinges are reverse-sprung so that the door self-opens when the release device is activated.

For thicker doors max. 28 mm.
Hinge with greater opening angle and reduced operating profile.
8.5 mm deep die-cast cup.
155° opening.
Possible drilling distance on the door (K): from 3 to 9 mm.
Compatible with all traditional Series 200 mounting plates
and with all Domi snap-on mounting plates



	T=	16	18	20	22	24	25	26	27	28
K=3	A=	0.0	0.0	0.0	0.0	0.0	0.10	0.40	0.75	1.20
K=4	A=	0.0	0.0	0.0	0.0	0.0	0.15	0.45	0.85	1.35
K=5	A=	0.0	0.0	0.0	0.0	0.0	0.20	0.50	0.95	120° 1.70
K=6	A=	0.0	0.0	0.0	0.0	0.0	0.25	0.60	1.10	120° 1.95
K=7	A=	0.0	0.0	0.0	0.0	0.0	0.30	0.70	1.30	100° 2.30
K=8	A=	0.0	0.0	0.0	0.0	0.0	0.35	0.85	120° 1.70	100° 2.80
K=9	A=	0.0	0.0	0.0	0.0	0.15	0.55	1.20	100° 2.15	

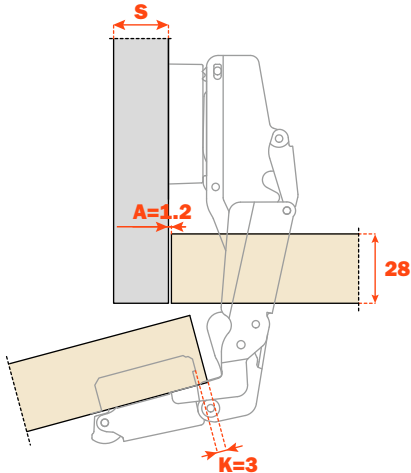
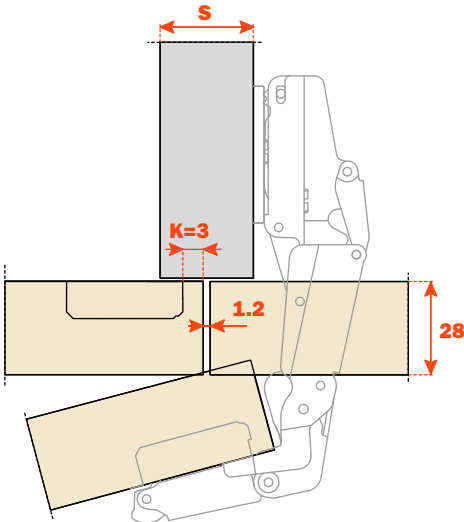
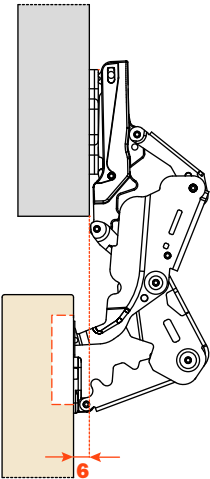
With stop device at 100° part. no. S2BM37XG
With stop device at 120° part. no. S2AM37XG

The above values are calculated on the assumption that the doors have square edges.
They are reduced if the doors have radiussed edges.

For spaces with removable components

“C” value

The door opens at 90° with lateral door protrusion of 6 mm.
The figures are based on a straight arm hinge and H=0 thickness of mounting plate.



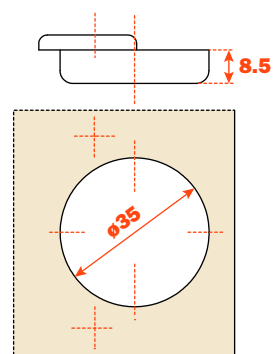
Packing

Boxes 100 pcs.
Pallets 2.400 pcs.

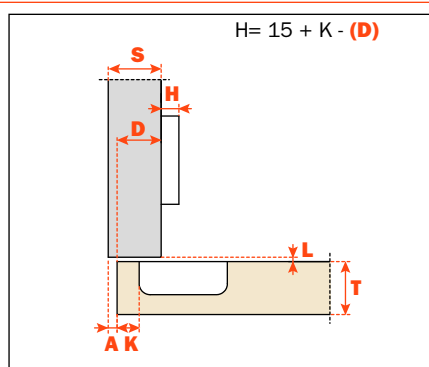
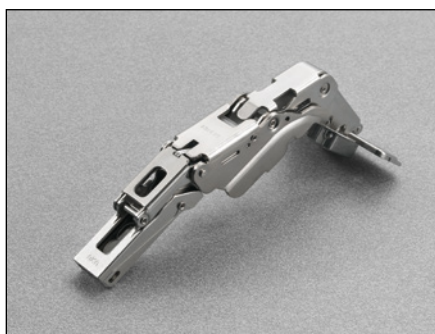
Use these formulas to determine the type of hinge arm, the drilling distance "K" and the height of the mounting plate "H" which is necessary to solve each application problem.

To limit the opening of the hinge, see page 55 chapter "Accessories".

Use the tables "Drillings and fixings" at page 27 to complete the code number of the desired hinge.

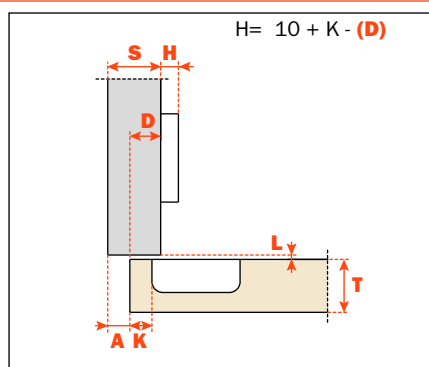


Arm 0



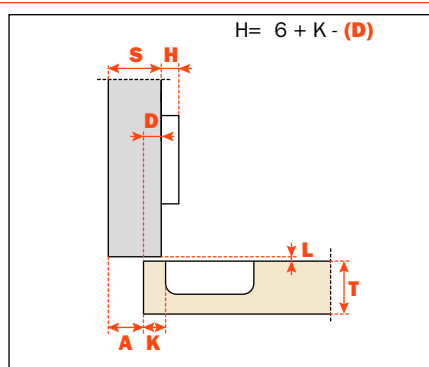
C2_RA99

Arm 5



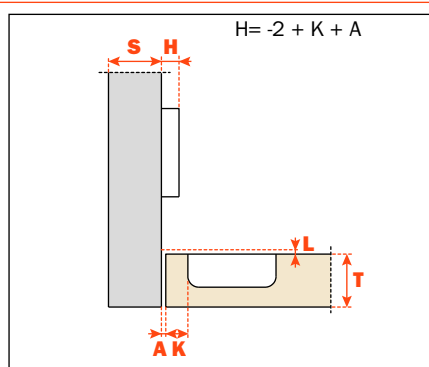
C2_RD99

Arm 9



C2_RG99

Arm 17



C2_RP99

Push - Series 200 hinges - Complementary hinges



Technical information

Push hinges are reverse-sprung so that the door self-opens when the release device is activated.

Hinges for wooden doors with positive angled assembly.

11 mm deep metal cup.

94° opening.

Possible drilling distance on the door (K): from 3 to 9 mm.

Compatible with all traditional Series 200 mounting plates and with all Domi snap-on mounting plates.

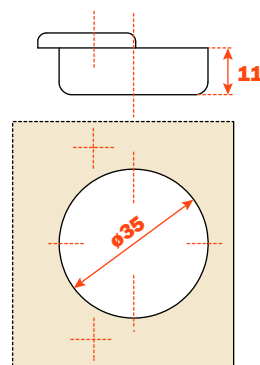
Packing

Boxes 150 pcs.

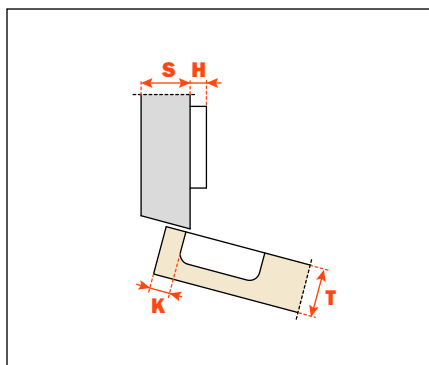
Pallets 3.600 pcs.

The solution of assembly problems where doors are mounted at a positive angle requires the verification of drilling distances by a practical trial. Please do not hesitate to consult our technical support department for assistance.

Use the tables "Drillings and fixings" at page 27 to complete the code number of the desired hinge.

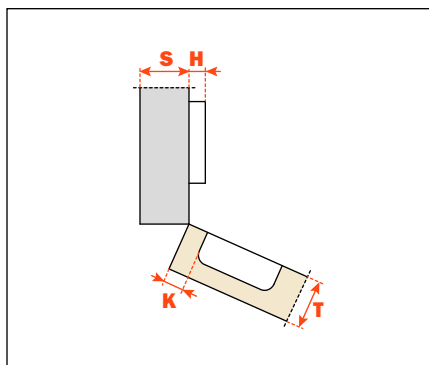


Arm 15°



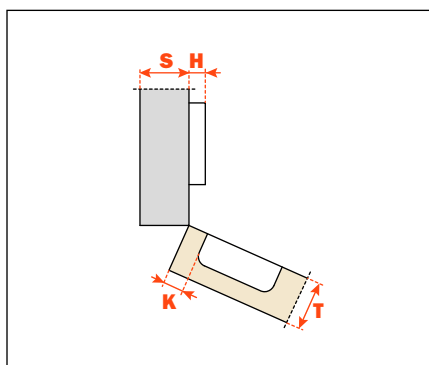
C2_VZ99

Arm 24°



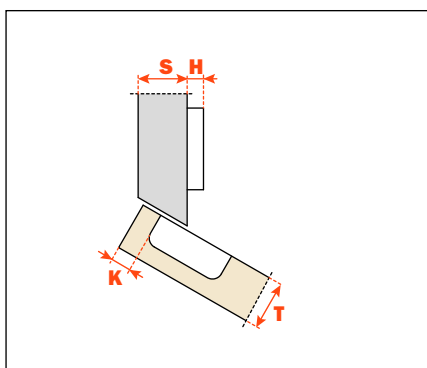
C2_VU99

Arm 30°



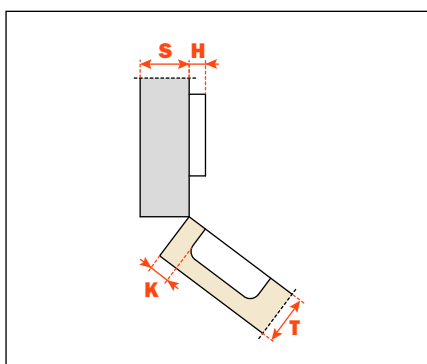
C2_VE99

Arm 30°



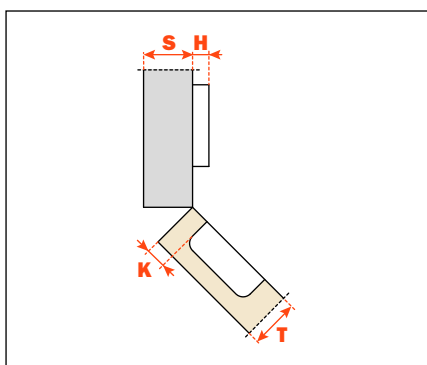
C2_VT99

Arm 37°



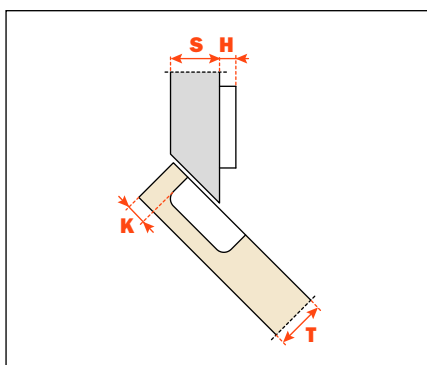
C2_VK99

Arm 45°



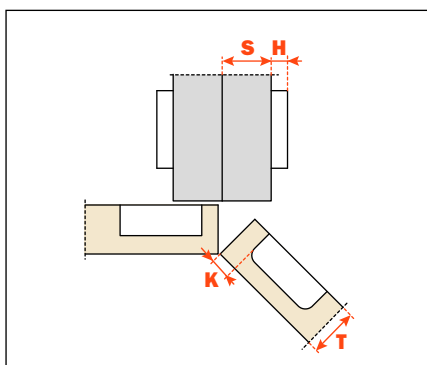
C2_VM99

Arm 45°



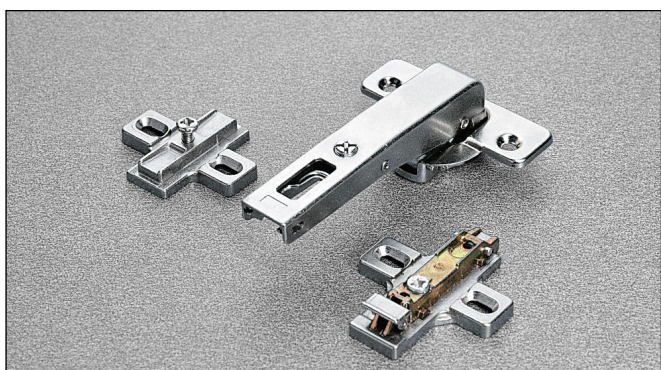
C2_VV99

Arm 45°



C2_VM99AC

Push - Series 200 hinges - Complementary hinges



Technical information

Push hinges are reverse-sprung so that the door self-opens when the release device is activated.

Crampon hinges.

For cabinet sides with 37x32 mm standard drilling.

11 mm deep metal cup.

94° opening.

Possible drilling distance on the door (K): from 3 to 9 mm.

Compatible with all traditional Series 200 mounting plates and with all Domi snap-on mounting plates.

Packing

Boxes 150 pcs.

Pallets 3.600 pcs.

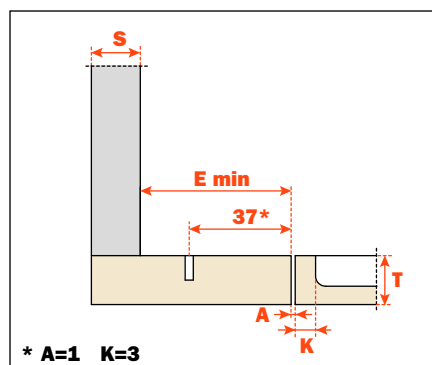
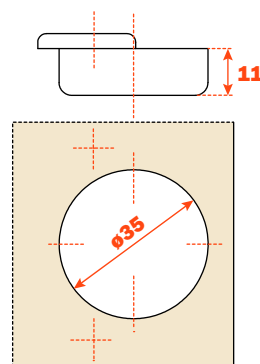
E min:

61 mm for Series 200 mounting plates.

70 mm for Domi snap-on mounting plates.

74 mm for Domi snap-on mounting plates with back cam.

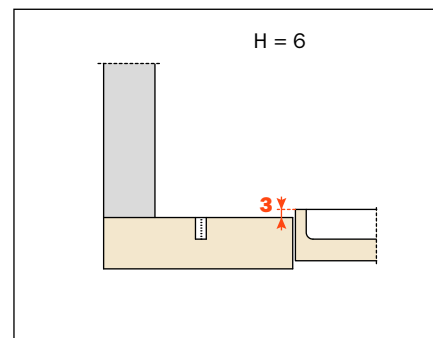
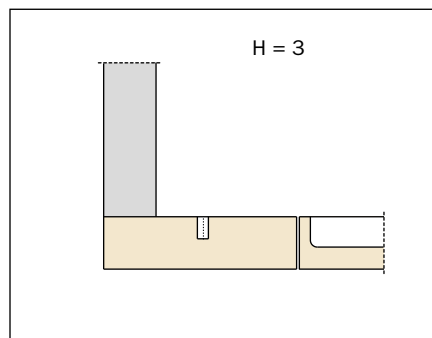
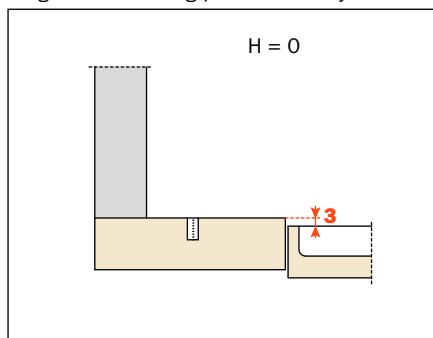
Use the tables "Drillings and fixings" at page 27 to complete the code number of the desired hinge.

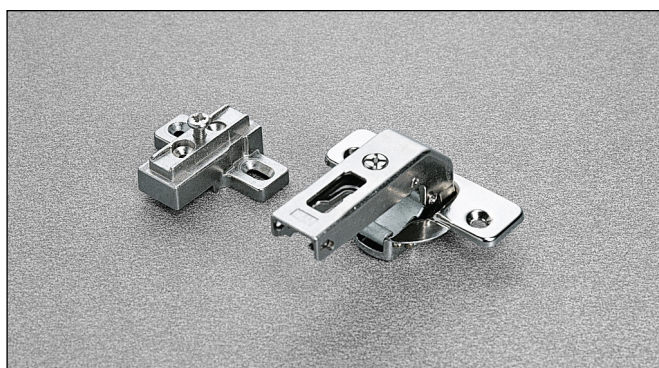


* A=1 K=3

C2_VN99AC

Heights of mounting plates for every assembly.





Technical information

Push hinges are reverse-sprung so that the door self-opens when the release device is activated.

Crampon hinges.

For smaller spaces with 15x32 mm drilling.

11 mm deep metal cup.

94° opening.

Possible drilling distance on the door (K): from 3 to 9 mm.

Compatible with all traditional Series 200 mounting plates, 28x32 mm drilling.

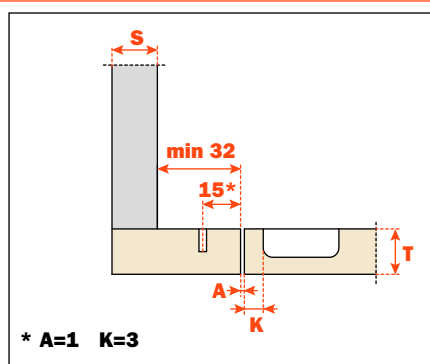
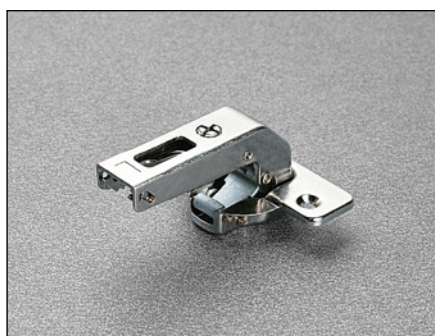
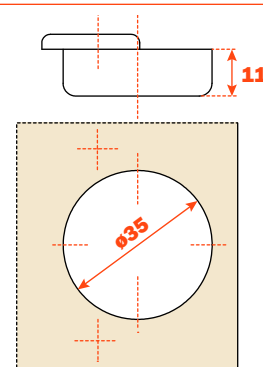
NOT COMPATIBLE with Domi snap-on mounting plates.

Packing

Boxes 150 pcs.

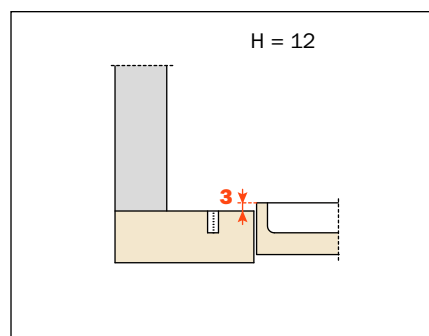
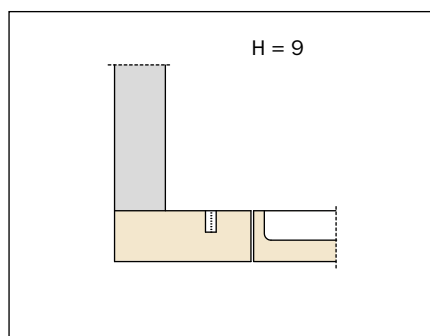
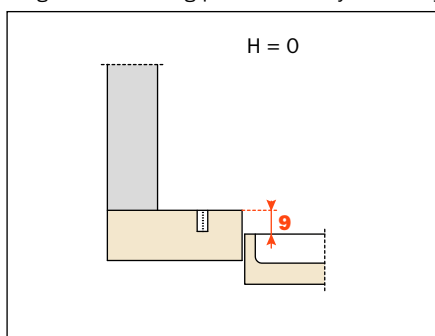
Pallets 3.600 pcs.

Use the tables "Drillings and fixings" at page 27 to complete the code number of the desired hinge.



C2_VN99

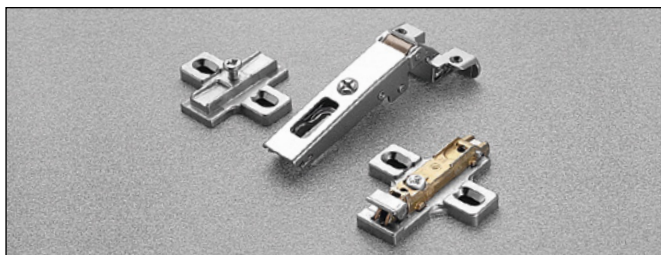
Heights of mounting plates for every assembly.





Push - Hinges for metal profiles

Push - Hinges for metal profiles - 105° opening



Technical information

Push hinges are reverse-sprung so that the door self-opens when the release device is activated.

Hinges specially developed for use with metal profiles.
105° opening.

We recommend the use of self-threading screws B 3.5 x 9.5
DIN 7982 to fix C2ZP hinges.

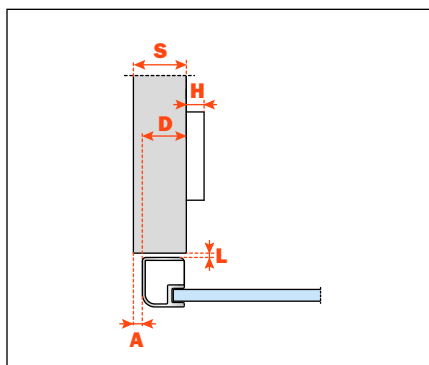
Compatible with all traditional Series 200 mounting plates and
with all Domi snap-on mounting plates.

Packing

Boxes 150 pcs.

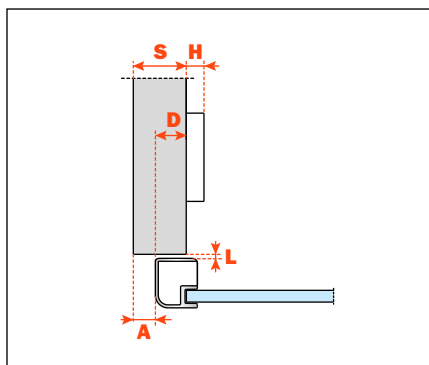
Pallets 3.600 pcs.

Arm 0



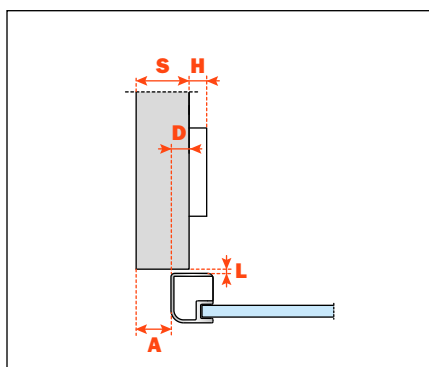
C2ZPA99

Arm 5



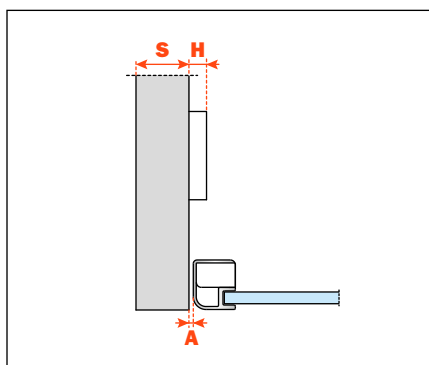
C2ZPD99

Arm 9



C2ZPG99

Arm 17



C2ZPP99



Technical information

Push hinges are reverse-sprung so that the door self-opens when the release device is activated.

Hinges for doors with positive angled assembly.

Hinges specially developed for use with metal profiles.

105° opening.

We recommend the use of self-threading screws B 3.5 x 9.5 DIN 7982 to fix C2ZP hinges.

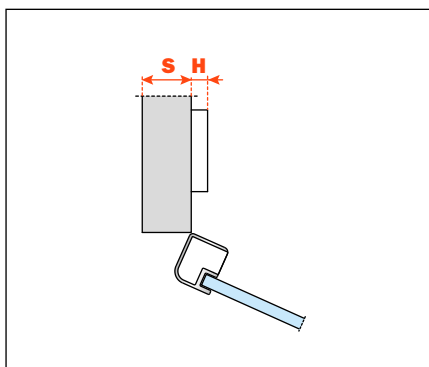
Compatible with all traditional Series 200 mounting plates and with all Domi snap-on mounting plates.

Packing

Boxes 150 pcs.

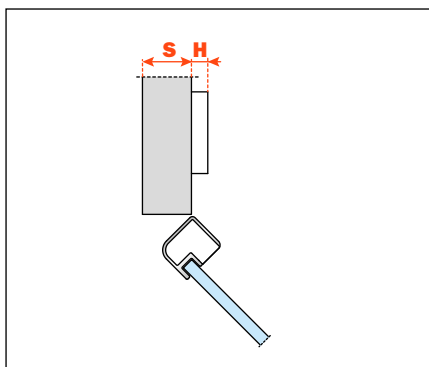
Pallets 3.600 pcs.

Arm 30°

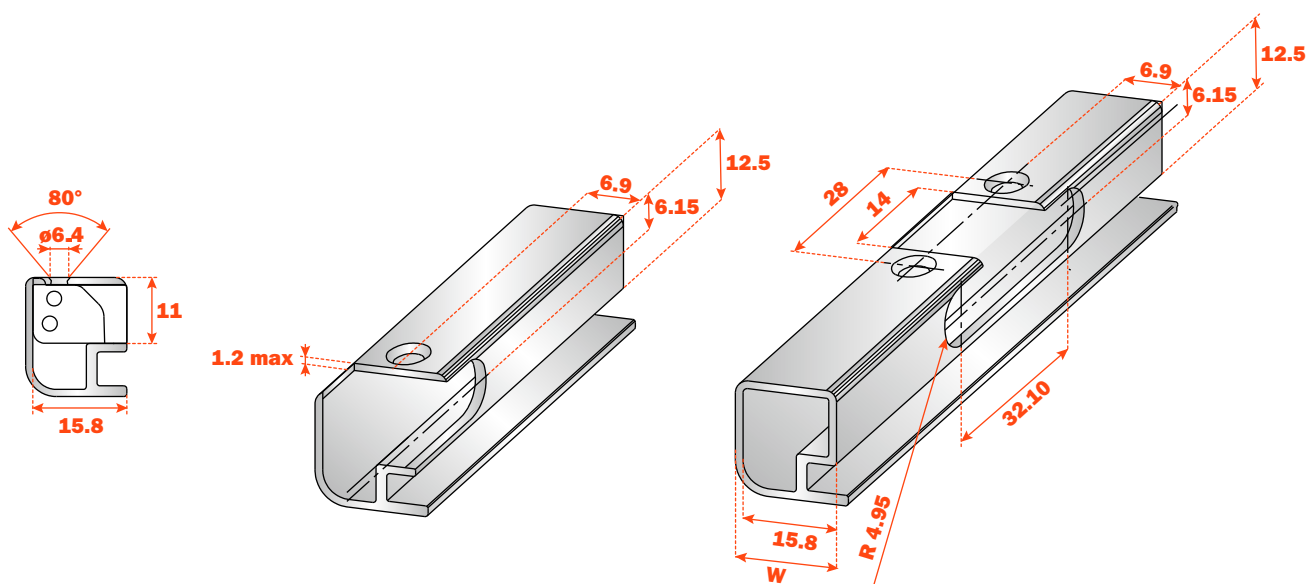


C2ZPE99

Arm 45°

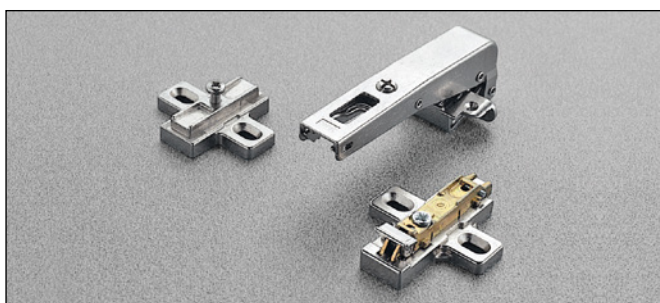


C2ZPM99



W = min. 17 mm
max. 24 mm

Push - Hinges for metal profiles - Complementary hinges



Packing

Boxes 150 pcs.
Pallets 3.600 pcs.

Technical information

Push hinges are reverse-sprung so that the door self-opens when the release device is activated.

Crampon hinges.

For cabinet sides with 37x32 mm standard drilling.

Hinges specially developed for use with metal profiles.
105° opening.

We recommend the use of self-threading screws B 3.5 x 9.5
DIN 7982 to fix C2ZP hinges.

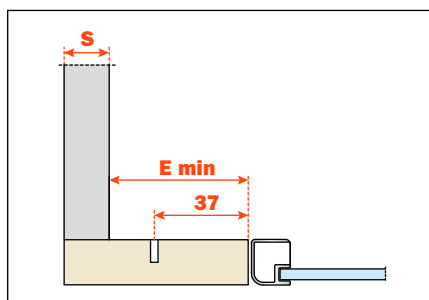
Compatible with all traditional Series 200 mounting plates and with all Domi snap-on mounting plates.

E min:

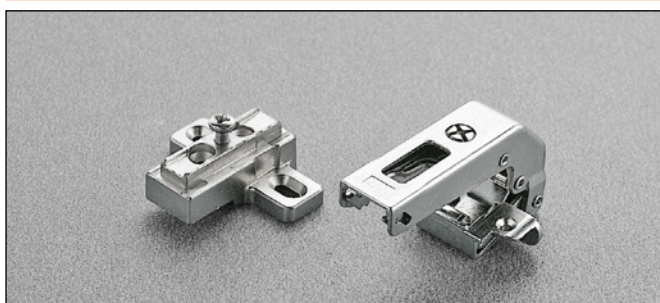
61 mm for Series 200 mounting plates.

70 mm for Domi snap-on mounting plates.

74 mm for Domi snap-on mounting plates with back cam.



C2ZPN99AC



Packing

Boxes 150 pcs.
Pallets 3.600 pcs.

Technical information

Push hinges are reverse-sprung so that the door self-opens when the release device is activated.

Crampon hinges.

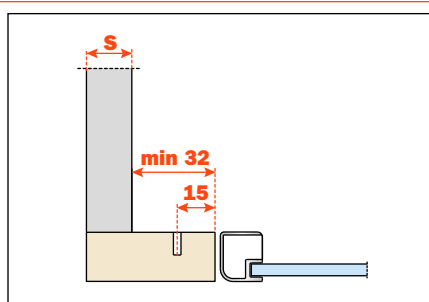
For smaller spaces with 15x32 mm drilling.

Hinges specially developed for use with metal profiles.
105° opening.

We recommend the use of self-threading screws B 3.5 x 9.5
DIN 7982 to fix C2ZP hinges.

Compatible with all traditional Series 200 mounting plates, drilling 28x32 mm.

NOT COMPATIBLE with Domi snap-on mounting plates.



C2ZPN99



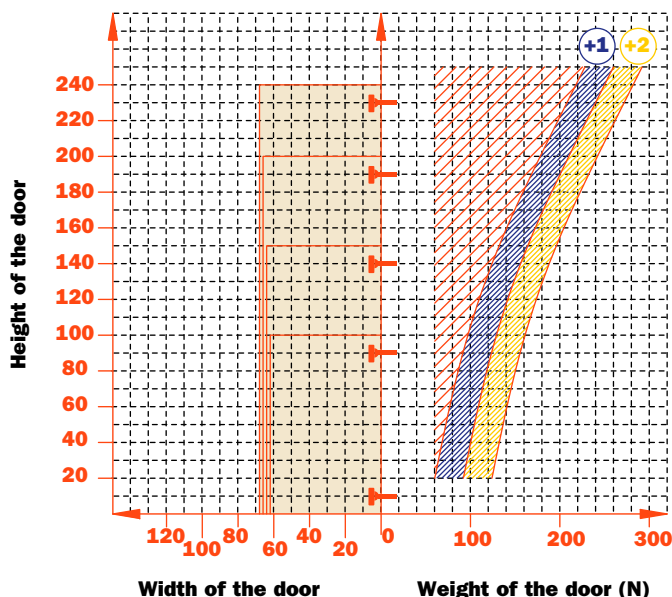
Push - Series B hinges

Push - Series B hinges for glass doors

No drilling of the glass is required.
Bright nickel plated die-cast cup and arm.

Constant "L" value of 0.7 mm (it does not change during side adjustment).

Approx. number of hinges required according to the door dimension and weight.



Technical features

Disclaimer

Salice Series B (CBG) hinges have been developed for use on glass doors and mirrors. Salice will accept no responsibility for any problems associated with the type of adhesive or method of application when used in conjunction with Series B hinges, nor for any consequences of the incorrect mounting of the door. It is recommended that the selected adhesive is subjected to prior testing.

The adhesive may be considered appropriate if the plate, when fixed to the glass, can sustain a minimum torsion load of 160 Nm.



Adjustments

Compensated side adjustment from -1.5 mm to +4.5 mm.
Height adjustment ± 2 mm.
Depth adjustment with Series 200 mounting plates +2.8 mm.
Depth adjustment with Domi snap-on mounting plates from -0.5 mm to +2.8 mm.
Anti-sliding safety stop.

Mounting plates

Symmetrical and asymmetrical bright nickel plated steel or die-cast Series 200 mounting plates.
Snap-on assembly on Domi mounting plates.
Positioning with pre-determined stop on traditional Series 200 mounting plates.

N.B. : Use POZIDRIVE No. 2 screwdrivers for all screws.

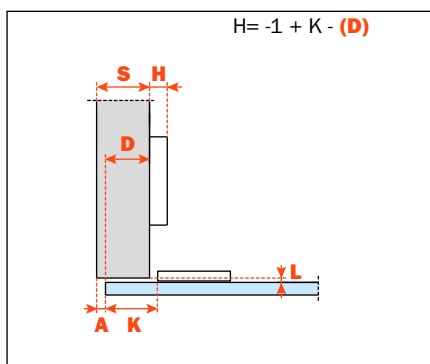
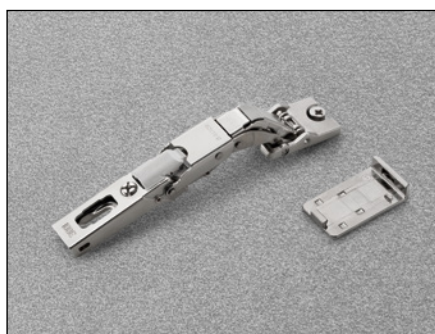
110° opening



Technical information

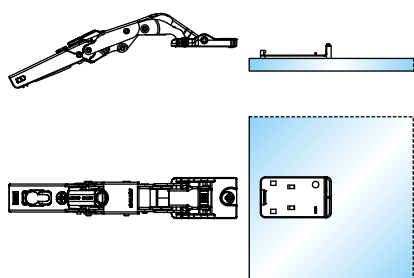
Push hinges are reverse-sprung so that the door self-opens when the release device is activated.

Hinges for glass doors. No drilling of the glass is required.
Possible fixing inset distance on the door (K): from 0 to 22 mm.
110° opening.
Compatible with all traditional Series 200 mounting plates and with all Domi snap-on mounting plates.

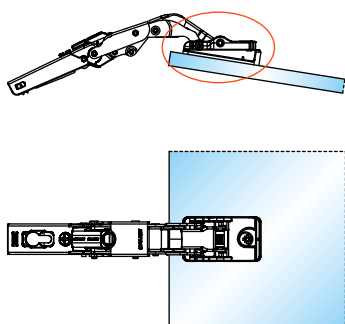


CBGQAC9

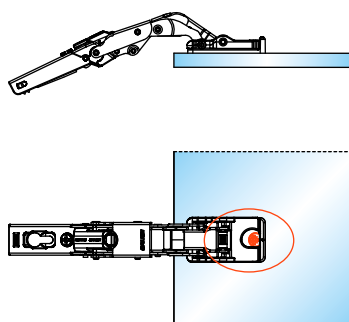
Packing
Boxes 150 pcs.
Pallets 3.600 pcs.



- 1) The hinge plate must be attached to the glass door with a specific adhesive using the correct procedure. We recommend that this operation is carried out by a specialist company. For further information on adhesives and their application, please contact the adhesive manufacturer or your glass supplier.

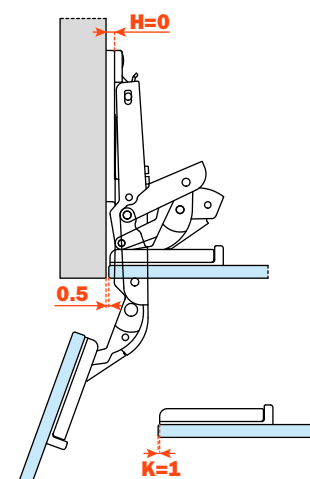
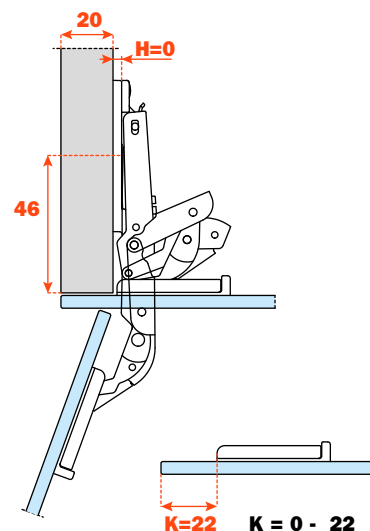


- 2) Locate the hinge onto the plate when it is bonded to the door.



- 3) Rotate the cam to secure the hinge to the plate.

"C" Value



Push - Series B hinges

for doors with a min. thickness of 8 mm

Hinges for doors with a minimum thickness of 8 mm made with special materials.

Bright nickel plated die-cast cup and arm.

Technical features

Disclaimer

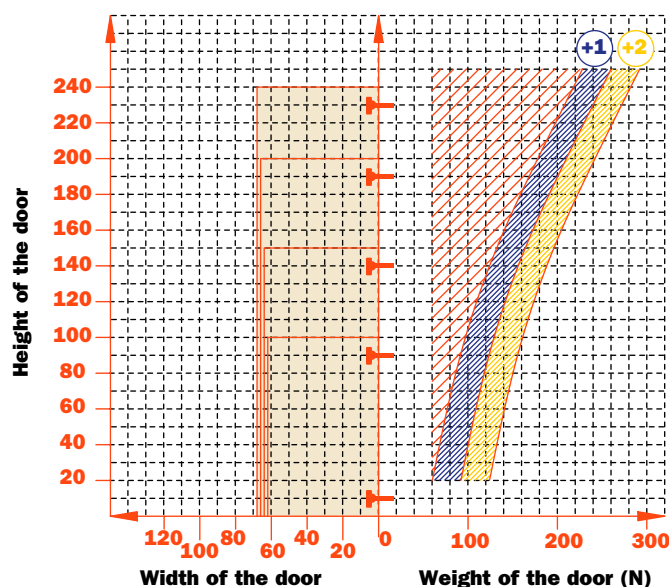
Salice Series B (CBY) hinges have been developed for use on doors with a min. thickness of 8 mm. The hinges must be fixed, if possible, with the screws included in the packaging.

For special materials, we suggest to contact our technical Assistance Service.

Salice will accept no responsibility for any problems associated with the use of screws different from those included or for any consequences of the incorrect method of application.

Constant "L" value of 0.7 mm (it does not change during side adjustment).

Approx. number of hinges required according to the door dimension and weight.



Adjustments

Compensated side adjustment from -1.5 mm to +4.5 mm.
Height adjustment ± 2 mm.
Depth adjustment with Series 200 mounting plates +2.8 mm.
Depth adjustment with Domi snap-on mounting plates from -0.5 mm to +2.8 mm.
Anti-sliding safety stop.

Mounting plates

Symmetrical and asymmetrical bright nickel plated steel or die-cast Series 200 mounting plates.
Snap-on assembly on Domi mounting plates.
Positioning with pre-determined stop on traditional Series 200 mounting plates.

N.B. : Use POZIDRIVE No. 2 screwdrivers for all screws.



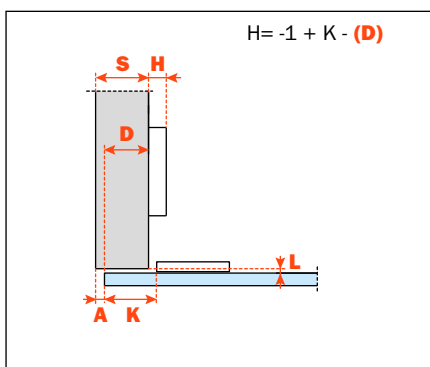
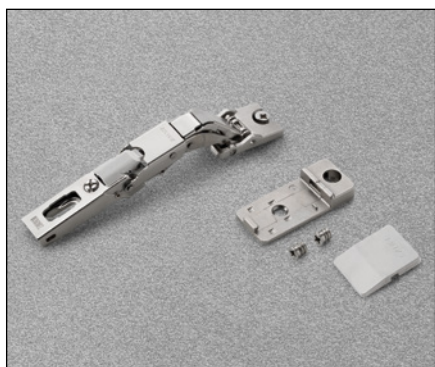
110° opening



Technical information

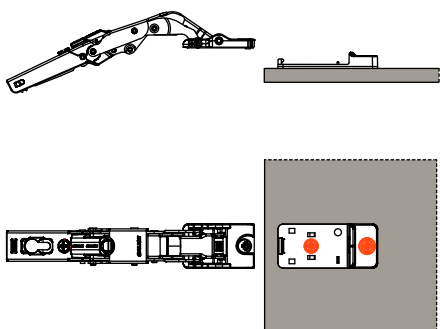
Push hinges are reverse-sprung so that the door self-opens when the release device is activated.

Hinges for doors with a minimum thickness of 8 mm made with special materials.
Possible fixing inset distance on the door (K): from 0 to 22 mm.
110° opening.
Compatible with all traditional Series 200 mounting plates and with all Domi snap-on mounting plates.

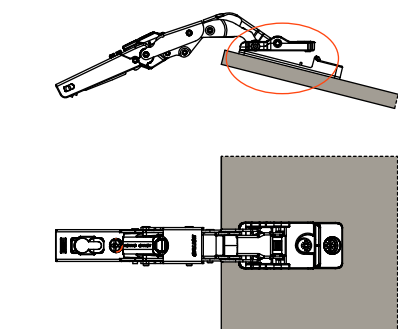


CBYQAC9

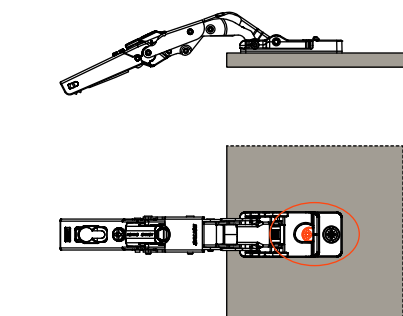
Packing
Boxes 150 pcs.
Pallets 3.600 pcs.



1) The hinge plate must be fixed to the door with the included screws.

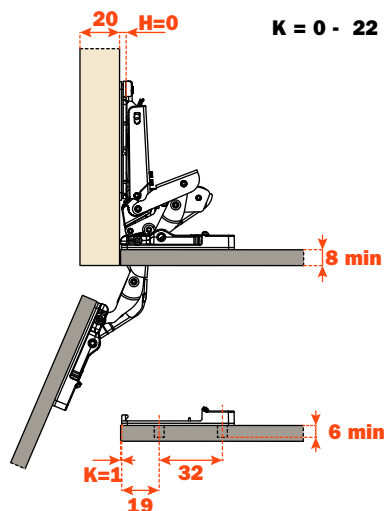
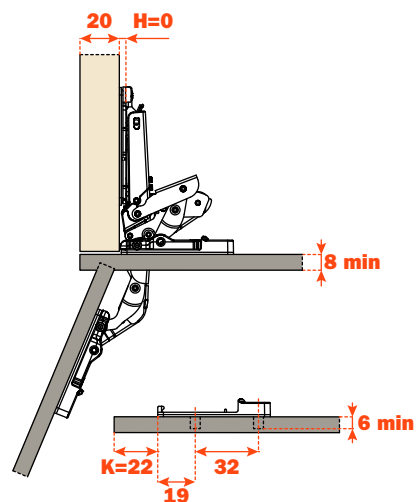


2) Locate the hinge onto the plate when it is fixed to the door.



3) Rotate the cam to secure the hinge to the plate.

“C” Value



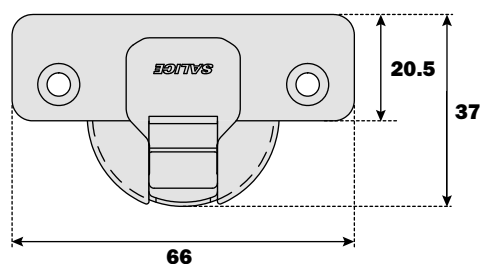
Push - Series B hinges for wooden doors

Series B hinges can provide a solution to a number of special applications, which include half-inset doors and doors with moulded profiles.

Dimensions of the 35 mm cup.

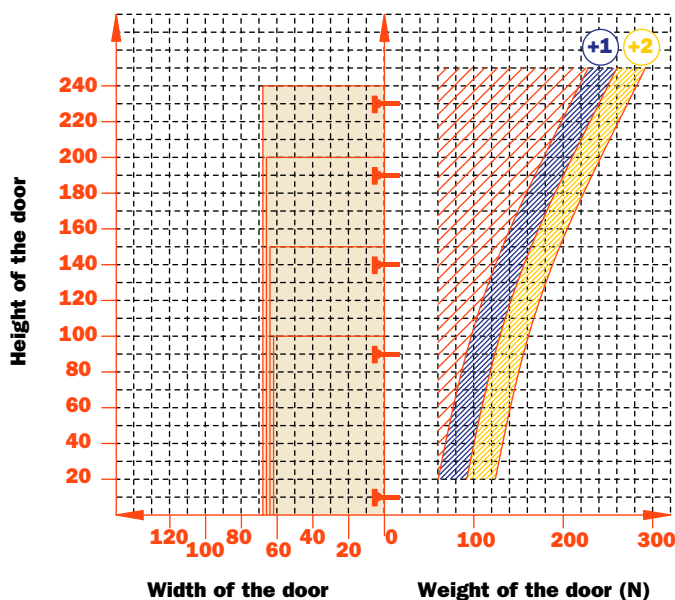
Bright nickel plated die-cast cup and arm.

Technical features



Constant "L" value of 0.7 mm (it does not change during side adjustment).

Approx. number of hinges required according to the door dimension and weight.



Adjustments

Compensated side adjustment from -1.5 mm to +4.5 mm.

Height adjustment ± 2 mm.

Depth adjustment with Series 200 mounting plates +2.8 mm.

Depth adjustment with Domi snap-on mounting plates from -0.5 mm to +2.8 mm.

Anti-sliding safety stop.

Mounting plates

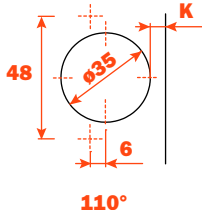
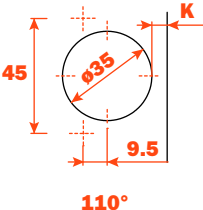
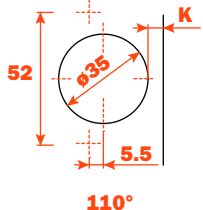

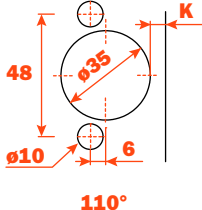
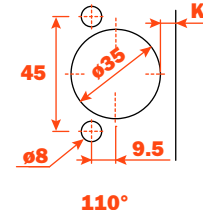
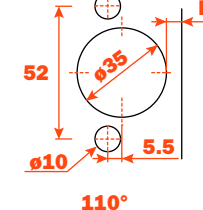
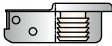
Symmetrical and asymmetrical bright nickel plated steel or die-cast Series 200 mounting plates.

Snap-on assembly on Domi mounting plates.

Positioning with pre-determined stop on traditional Series 200 mounting plates.

N.B. : Use POZIDRIVE No. 2 screwdrivers for all screws.

Drillings and fixings

			
Wood screw 	A	P	U
			
Dowel 	B	R	W

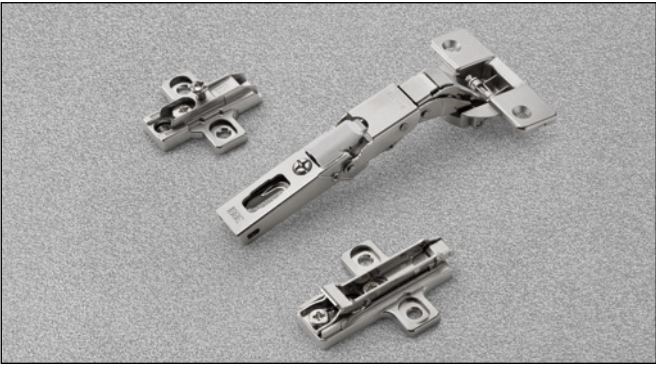
Use this table to identify the available drillings and fixings.

Fill the third position of the hinge code number with the letter or the number corresponding to your choice. I.e.: CB_QAC_.



Fill this position with the chosen letter or number.

Push - Series B hinges - For wooden doors - 110° opening

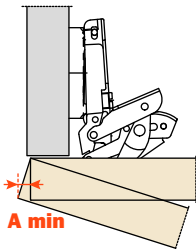


Technical information

Push hinges are reverse-sprung so that the door self-opens when the release device is activated and can provide a solution to a number of special applications, which include half-inset doors and doors with moulded profiles.

9 mm deep metal cup.
110° opening.
Possible drilling distance on the door (K): from 3 to 18 mm.
Compatible with all traditional Series 200 mounting plates and with all Domi snap-on mounting plates.

Space needed to open the door

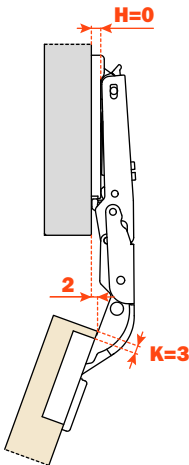


T=	16	18	20	22	24	26
K=3	A= 0.0	0.0	0.0	0.0	0.3	1.4
K=4	A= 0.0	0.0	0.0	0.0	0.4	1.5
K=5	A= 0.0	0.0	0.0	0.0	0.5	1.9
K=6	A= 0.0	0.0	0.0	0.0	0.7	2.6
K=7	A= 0.0	0.0	0.0	0.0	11.3	12.8
K=8	A= 0.0	0.0	0.0	0.0	10.3	12.9
K=9	A= 0.0	0.0	0.0	0.0	9.3	11.9
K=10	A= 0.0	0.0	0.0	6.0	8.3	10.9
K=11	A= 0.0	0.0	0.0	5.1	7.3	9.9
K=12	A= 0.0	0.0	0.0	4.1	6.3	8.9
K=13	A= 0.0	0.0	1.4	3.3	5.3	7.9
K=14	A= 0.0	0.0	0.7	2.6	4.5	6.9
K=15	A= 0.0	0.0	0.2	2.0	3.8	5.9
K=16	A= 0.0	0.0	0.0	1.4	3.2	5.0
K=17	A= 0.0	0.0	0.0	1.0	2.7	4.4
K=18	A= 0.0	0.0	0.0	0.7	2.2	3.9

The above values are calculated on the assumption that the doors have square edges. They are reduced if the doors have radiussed edges.

Projection of the door

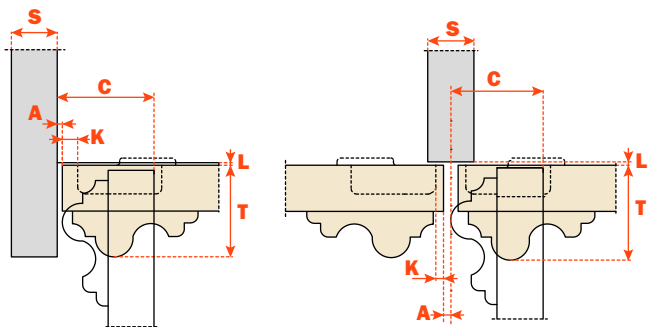
Projection of the door from the cabinet side at the max. opening. The figures are based on a straight arm hinge, H=0 mm thickness of mounting plate and K value = 3 mm.



“C” value

With this formula you can obtain the max. thickness of the moulded door that can be opened without touching adjacent carcase sides, doors or walls, whilst bearing in mind the above L-K-T values.

$C = 5.5 + K + A$

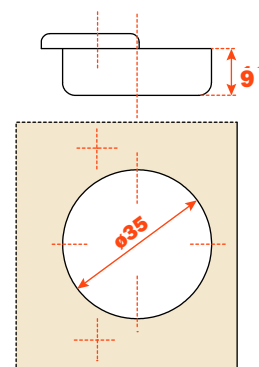


Packing

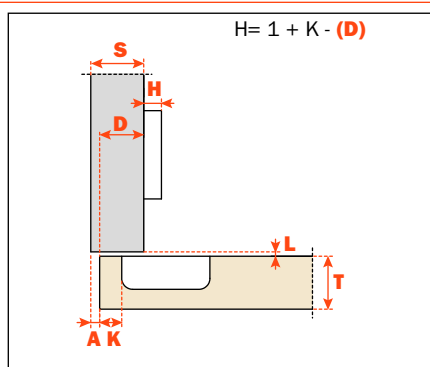
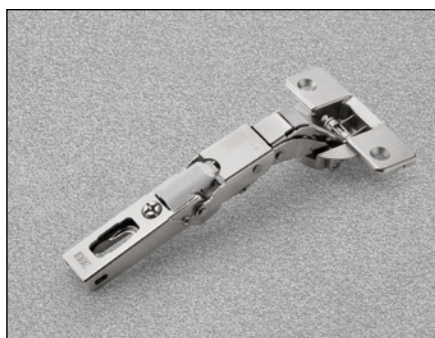
Boxes 150 pcs.
Pallets 3.600 pcs.

Use these formulas to determine the type of hinge arm, the drilling distance "K" and the height of the mounting plate "H" which is necessary to solve each application problem.

To limit the opening of the hinge, see page 55 chapter "Accessories".



Arm 0



CB_QAC9

Drillings and fittings
at page 49.



Accessories

Accessories

Screw cover caps.

S2BX83H9



Symmetrical steel screw cover cap, it can be personalised on request.

For all Series 200 and B hinges.

S2MX83H9



Symmetrical steel screw cover cap with embossed logo.

For all Series 200 and B hinges.

S2XX83A1



Symmetrical plastic screw cover cap, it can be personalised on request.

For all Series 200 hinges.

Flange cover caps

S2XX85H9



Steel flange cover cap, it can be personalised on request.

For all Series 200 hinges.

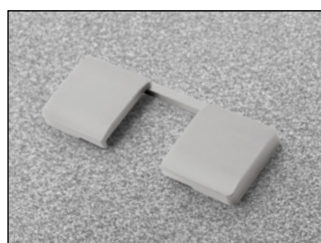
S2CX85H9



Steel flange cover cap with embossed logo.

For all Series 200 hinges.

SBXX85X_



Plastic flange cover cap for Series B (CBA) hinges.

Available colours:

SBXX85X6 = Titanium
SBXX85X9 = Nickel-plated

SBLX85A_



Plastic flange cover cap for Series B (CBY) hinges.

Available colours:

SBLX85A6 = Titanium
SBLX85A9 = Nickel-plated

Spacer for Series 200 hinges

S2A786XG



Spacer for hinges with 35 mm diameter.

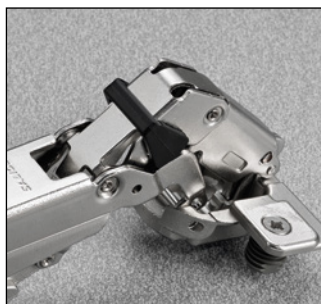
To be used to reduce the cup drilling depth by 1.4 mm.

Accessories

Stop devices

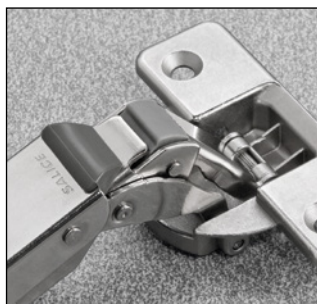
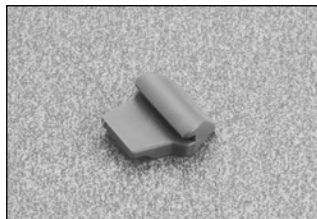
S2AF37X3

For 155° hinges,
it limits opening at 135°.



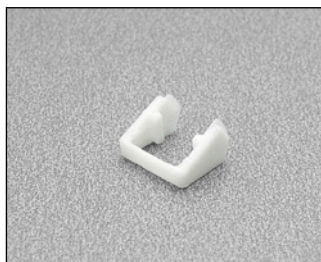
SBA237XG

For Series B hinges it limits
opening at 90°.



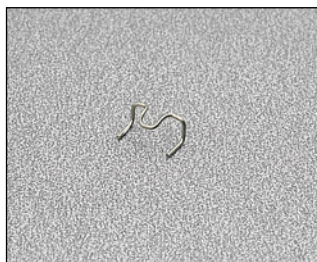
S2BF37XY

For 155° hinges,
it limits opening at 115°.



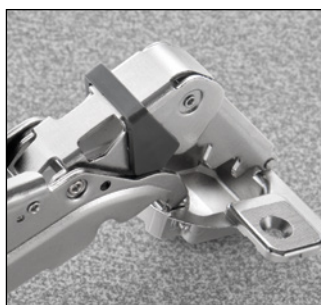
S2A637XF

For all hinges with 94° opening
and 35 mm cup diameter, it limits
opening at 86°.



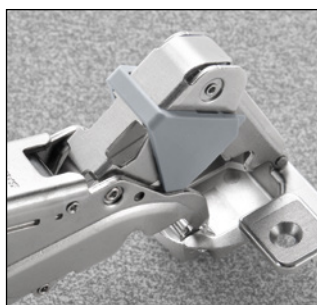
S2AM37XG

For 155° hinges,
it limits opening at 120°.



S2BM37XG

For 155° hinges,
it limits opening at 92°.



This image shows a single sheet of white paper with horizontal ruling lines. The lines are evenly spaced and run across the width of the page. There are no margins, text, or other markings on the paper.

Notes

[illegible]

HEADQUARTERS AND PRODUCTION UNITS

ARTURO SALICE S.p.A.

HEAD OFFICE

VIA PROVINCIALE NOVEDRATESE, 10
22060 NOVEDRATE (COMO) ITALIA
TEL. 031 790424 - FAX 031 791508
info.salice@salice.com
www.salice.com

ARTURO SALICE S.p.A.

VIA ARISTIDE MERLONI, 11
61036 COLLI AL METAURO (PU) ITALIA
TEL. 0721 899800
FAX 0721 897980
info.salice@salice.com
www.salice.com

BORTOLUZZI SISTEMI S.p.A.

VIA CADUTI 14 SETTEMBRE 1944, 45
32100 BELLUNO (BL) ITALIA
TEL. 0437 930866
FAX 0437 931442
info@bortoluzzi.com
www.salice.com

NUOVA ATIM S.r.l.

VIA IV NOVEMBRE, 52
20019 SETTIMO MILANESE (MI) ITALIA
TEL. 02 33503203
FAX 02 33516514
info@atimspa.com
www.atimspa.com

BRANCHES

DEUTSCHE SALICE GMBH

RUDOLF DIESEL STR. 10
74382 NECKARWESTHEIM
TEL. 07133 9807-0
FAX. 07133 9807-16
info.salice@deutschesalice.de
www.salice.com

DEUTSCHE SALICE GMBH

VERKAUFSBÜRO NORD
RINGSTRASSE 36/A30 CENTER
32584 LÖHNE
TEL. 05731 15608-0
FAX. 05731 15608-10
vknord@deutschesalice.de
www.salice.com

SALICE UK LTD.

KINGFISHER WAY
HINCHINGBROOKE BUSINESS PARK
HUNTINGDON CAMBS PE 29 6FN
TEL. 01480 413831
FAX. 01480 451489
info.salice@saliceuk.co.uk
www.salice.com

SALICE FRANCE S.A.R.L.

285 RUE DE GOA ZAC LES 3 MOULINS
06600 ANTIBES
TEL. 0493 330069
FAX. 0493 330141
info.salice@salicefrance.com
www.salice.com

SALICE ESPAÑA, S.L.U.

C/ AIGUAFREDA 4, P.I. AMETLLA PARK
08480 L'AMETLLA DEL VALLÈS (BARCELONA)
TEL. 0034 938 46 88 61
info.salice@saliceespana.es
www.salice.com

SALICE PORTUGAL UNIP. LDA

SHOWROOM:
TV SÁ E MELO 161 FA
4470-116 MAIA - PORTO
TEL: 00351 224 154 221
Info@saliceportugal.pt
www.salice.com
ARMAZÉM:
VIA ROTA DOS MÓVEIS I 399
4585-325 GANDRA

SALICE CHINA (SHANGHAI) CO. LTD.

RM 602, 6/F, TOWER 1,
3688 YINGGANG DONG ROAD
QINGPU DISTRICT
201703 SHANGHAI, CHINA
TEL. 021 3988-9880
info.salice@salicechina.com
www.salicechina.com

SALICE INDIA PVT. LTD.

1001 & 1002, 10TH FLOOR,
CENTRUM, PLOT NO. C-3,
OPP. WAGLE PRABHAG SAMITI OFFICE,
MIDC AREA, WAGLE INDUSTRIAL ESTATE,
THANE - 400604, MAHARASHTRA
TEL. 022 20812050
info@saliceindia.com
www.salice.com

SALICE CANADA INC.

3500 RIDGEWAY DRIVE,
UNIT#1
MISSISSAUGA, ONTARIO, L5L 0B4
TEL. 905 820 8787
FAX. 905 820 7226
info.salice@salicecanada.com
www.salicecanada.com

SALICE AMERICA INC.

2123 CROWN CENTRE DRIVE
CHARLOTTE NC. 28227
TEL. 704 841 7810
FAX. 704 841 7808
info.salice@saliceamerica.com
www.saliceamerica.com

ARTURO SALICE S.p.A.

SEDE PRINCIPALE

VIA PROVINCIALE NOVEDRATESE, 10
22060 NOVEDRATE (COMO) ITALIA
TEL. 031 790424 - FAX 031 791508

info.salice@salice.com
www.salice.com



Digital contents