



THEMES

***SALICE***

ENG

**Excessories**  
THEMES

---

An infinite variety of accessories, colours and combinations.  
Multiple finishes, leather and precious fabrics that enrich and enliven wardrobes and walk-in closets of any finish, which can host elegantly refined hangers, coat-holder bags, scarves and tie hangers, drawers and illuminated shelves, trays in fabric, boxes and multipurpose glovebox trays, characterized by numerous shapes, dimensions and colours.  
The bedroom is now transformed into a vibrant unexplored world, rich in life and personality; a different space, vivid and multi-coloured, completely fashionable, elegant and aesthetically incomparable.

The following pages offer numerous examples of possible combinations, showing all the elements of the Excessories collection and its different matching possibilities.

AMBIENCES

CASUAL

- Combination 1
- Combination 2

- Page 5
- Page 7
- Page 13



LIGHT

- Combination 1
- Combination 2

- Page 19
- Page 21
- Page 29



HIGH-END

- Combination 1
- Combination 2

- Page 37
- Page 39
- Page 47



LUXURY

- Combination 1
- Combination 2

- Page 55
- Page 57
- Page 65



## CASUAL

---

A fresh, light and day-to-day wardrobe.  
Functional but totally sophisticated elements.  
Hangers and hanger rods, made of wenge-dyed beech, drawers in coated aluminium in metal grey brown finish, and boxes in rich fabric are the key players.  
Extractable coat hanging hooks, shoe racks and trousers hangers for drawers boast their high technical development.  
The dark and light tones join in a complete and beautiful combination of colours, perfectly compatible with any kinds and finishes of wardrobes.









4-sided aluminium drawers: the technical elements hide completely behind a modern design. The distinctive shape of the profile, resembling a sinuous and soft wave, make them unique.

Simple and practical swivel hanger, to be fixed under the shelf and to be used in case of need.



Boxes in rich fabrics, available in different colours. Refined and saving-space products, enabling the total space organisation and colour coordination of wardrobes and walk-in closets.





Items included in COMBINATION 1

HANG



Women's suit hanger  
with skirt clips



Men's suit hanger  
with trouser bar



Skirt hanger



Trousers hanger



Hanger rod with hook

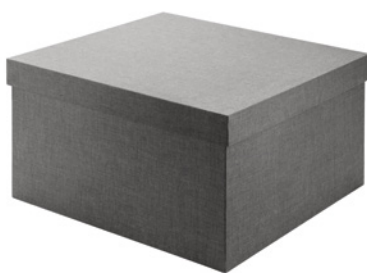


Swivel hanger fixed  
under the shelf



Hanger rail for clothes with supports,  
for wooden shelf

CONTAIN



Box  
- Bottom dimensions (mm): 390x465 H 255  
- Top dimensions (mm): 400x480 H 50

PULL-OUT



Aluminium 4-sided drawer H 78



Aluminium 4-sided drawer H 128



Trousers hanger and/or skirt hanger  
for aluminium 4-sided drawer H 52







Pull-out hangers are also available: recessed into the shelf, they are almost invisible but highly practical elements.

The greatest versatility of all: the drawers of the collection, with wooden frontal, come into three different heights and can therefore contain every kind of garments, including accessories and bulky clothes.



Different hangers to choose from, both for women and for men; sophisticated finishes and deep attention even to the most functional details, like the hook in metal grey brown finish.





Items included in COMBINATION 2

HANG



Women's suit hanger  
with skirt clips



Men's suit hanger  
with trouser bar



Skirt hanger



Trousers hanger



Hanger rod with hook

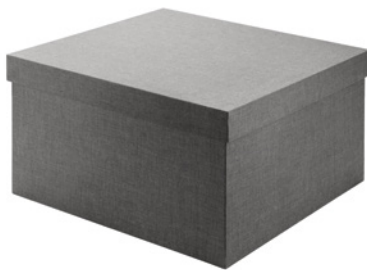


Pull-out hanger



Hanger rail for clothes with supports,  
for wooden shelf

CONTAIN



Box  
- Bottom dimensions (mm): 390x465 H 255  
- Top dimensions (mm): 400x480 H 50

PULL-OUT



Aluminium 3-sided drawer H 78  
WOODEN FRONTAL H 100



Aluminium 3-sided drawer H 128  
WOODEN FRONTAL H 150



Wired shoe rack for aluminium 4-sided drawer H 52

## LIGHT

---

The space become richer and the walk-in closet more refined and luxurious.

The hangers and the boxes perfectly match the bags and scarves hangers and trays made of imitation leather, hosting and protecting accessories and jewellery.

The drawers with a wooden or glass frontal come together with the highly designed and futuristic 4-sided aluminium drawers.

The finishes evoke fresh and strong tones.







A precious wardrobe enriched with watch-holder trays, spectacle-, earring- and ring-holder trays. Their numerous finishes, from moka brown to the different tones of greys to toffee white, make them perfectly suitable.

Clean and rigorous shapes, with attention to details: the trousers and skirt hangers are made of wenge-dyed beech.



A discreet organisation of space: the drawers can come with handy shoe racks.





Items included in COMBINATION 1

HANG



Women's suit hanger  
with skirt clips



Men's suit hanger  
with trouser bar



Skirt hanger



Trousers hanger



Scarves and headscarves  
hanger



Bags hanger

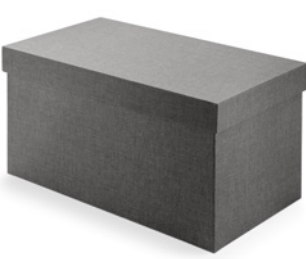


Hanger rod with hook

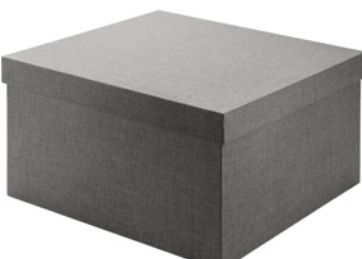


Hanger rail for clothes with supports,  
for wooden shelf

CONTAIN



Box  
- Bottom dimensions (mm): 250x465 H 255  
- Top dimensions (mm): 260x480 H 50



Box  
- Bottom dimensions (mm): 390x465 H 255  
- Top dimensions (mm): 400x480 H 50

STORE



Multi-purpose tray with 4 internal dividers  
Material: imitation leather



Earring- and ring-holder tray  
Material: imitation leather



Watch-holder tray  
Material: imitation leather

PROTECT



Coat-holder bag with pleats

PULL-OUT



Aluminium 4-sided drawer H 78



Wired shoe rack for aluminium 4-sided drawer H 52







Coat-holder bags in cotton, available in different colours like natural linen, stonewre grey and brick brown. They can be folded easily and elegantly with buttons made of wenge-dyed olive wood.

The drawers, characterized by simple and clean lines, can host trousers hangers made of aluminium, allowing the tidy arrangement of clothes. The soft trim on the upper surface also helps to hold the trousers in place.



Accessories deserve the same attention as clothes: here are the bags- and scarves hangers and the sophisticated tie hangers.





Items included in COMBINATION 2

HANG



Women's suit hanger  
with skirt clips



Men's suit hanger  
with trouser bar



Skirt hanger



Trousers hanger



Scarves and headscarves  
hanger



Tie and belt hanger



Bags hanger



Hanger rod with hook



Tie hanger rod with  
genuine leather supports



Swivel hanger fixed  
under the shelf



Hanger rail for clothes with supports,  
for wooden shelf

CONTAIN



Box with tab made of imitation leather  
- Bottom dimensions (mm): 250x465 H 255  
- Top dimensions (mm): 260x480 H 50



Box with tab made of imitation leather  
- Bottom dimensions (mm): 390x465 H 255  
- Top dimensions (mm): 400x480 H 50

STORE



Multi-purpose tray with 3 internal dividers  
Material: imitation leather



Multi-purpose tray with 5 internal dividers  
Material: imitation leather



Watch-holder tray  
Material: imitation leather

PROTECT



Coat-holder bag with pleats

PULL-OUT



Aluminium 3-sided drawer H 128  
WOODEN FRONTAL H 150



Aluminium 3-sided drawer H 52  
GLASS FRONTAL H 75



Trousers hanger and/or skirt hanger  
for aluminium 3-sided drawer H 52  
GLASS FRONTAL H 75

## HIGH-END

---

A multiplicity of elements and combinations, for a special and matchless walk-in closet.

The lightness and the elegant linearity of the 4-sided or glass-frontal alu-drawers are reflected in shoe-racks, tie-hangers, fabric trays and suit hangers which, with leather insert, present refined design.

The colours of the boxes, with bright and vivid tones, perfectly match the finishes of the trays.









A wardrobe with light and futuristic forms, freely modular: the 4-sided alu-drawers combined with the 3-sided drawers with glass frontal, where no technical element is visible, represent the symbol of technological innovation and most refined design.

Shoe-rack made of coated metal sheet, inserted into the drawer. An additional functionality for a complete walk-in closet.



Like trays, also drawer inserts act as containers. Of very high quality and aesthetics, they are available in wenge or walnut-dyed finish.





Items included in COMBINATION 1

HANG



Women's suit hanger  
with skirt clips



Men's suit hanger  
with trouser bar



Skirt hanger



Trousers hanger



Scarves and headscarves  
hanger



Tie and belt hanger



Bags hanger



Hanger rod with hook

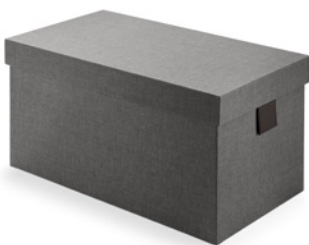


Tie hanger rod with  
genuine leather supports



Swivel hanger fixed  
under the shelf

CONTAIN



Box with tab made of imitation leather  
- Bottom dimensions (mm): 250x465 H 255  
- Top dimensions (mm): 260x480 H 50



Box with tab made of imitation leather  
- Bottom dimensions (mm): 390x465 H 255  
- Top dimensions (mm): 400x480 H 50

STORE



Multi-purpose tray with 3 internal dividers  
Material: imitation leather



Multi-purpose tray with 5 internal dividers  
Material: imitation leather



Earring- and ring-holder tray  
Material: imitation leather

PROTECT



Coat-holder bag with pleats

PULL-OUT



Aluminium 3-sided drawer H 128  
WOODEN FRONTAL H 150



Aluminium 3-sided drawer H 78  
GLASS FRONTAL H 100



Aluminium 4-sided drawer H 128

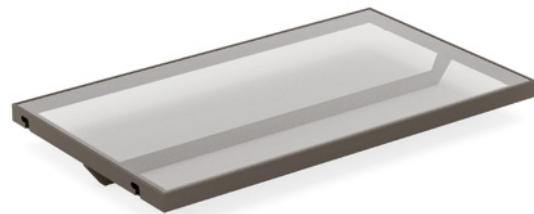


Trousers hanger and/or skirt hanger  
for aluminium 4-sided drawer H 52



Shoe rack for aluminium 4-sided drawer H 52

SHELVES



Hanger rail for clothes and rail-holder supports  
for shelf with aluminium frame







Fabric trays, of various dimensions and finishes, with imitation leather tab, to neatly store clothing items and accessories.

Drawers which become display shelves, redolent of the most exquisite boutiques: items and ring-holder trays placed on the glass bottom become precious possessions.



The drawers can be equipped with practical bed linen containers made of quilted fabric, custom-made in a tasteful Tasmania grey colour.





Items included in COMBINATION 2

HANG



Women's suit hanger  
with skirt clips



Men's suit hanger  
with trouser bar



Skirt hanger



Trousers hanger



Scarves and headscarves  
hanger



Tie and belt hanger



Bags hanger



Hanger rod with hook



Tie hanger rod with  
genuine leather supports



Swivel hanger fixed  
under the shelf



Hanger rail for clothes with supports,  
for wooden shelf

CONTAIN



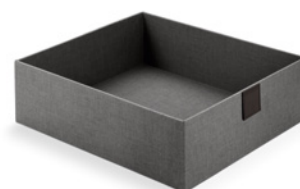
Box with tab made of imitation leather  
- Bottom dimensions (mm): 390x465 H 125  
- Top dimensions (mm): 400x480 H 50



Box with tab made of imitation leather  
- Bottom dimensions (mm): 390x465 H 255  
- Top dimensions (mm): 400x480 H 50



Tray with tab made of imitation leather  
- Dimensions (mm): 350x400 H 80



Tray with tab made of imitation leather  
- Dimensions (mm): 350x400 H 120

STORE



Multi-purpose tray with internal divider  
Material: imitation leather



Multi-purpose tray with 4 internal dividers  
Material: imitation leather



Earring-holder tray  
Material: imitation leather



Earring- and ring-holder tray  
Material: imitation leather



Watch-holder tray  
Material: imitation leather

PROTECT



Coat-holder bag with pleats

PULL-OUT



Aluminium 3-sided drawer H 128  
GLASS FRONTAL H 150



Aluminium 4-sided drawer H 52



Aluminium 4-sided drawer H 78



Bed linen storage for drawer

SHELVES



Hanger rail for clothes and rail-holder supports  
for shelf with aluminium frame



## LUXURY

---

The Excessories collection reaches its zenith and distils all of its elegance into its most exalted embodiment which transforms the wardrobe to a luxury item.

Light, which enhances the beauty of the contents of the wardrobe, is a vital component here.

Illuminated glass shelves that exhibit bags, clothes and hats like a fashion studio, hanger rails that beautify clothes, drawers with glass frontals, shirt-holder trays, tie-holder trays and hanger rods with hook and leather sleeve.

The interplay of lights and colours, lighter tones melted with those recalling earth and fire, which make the wardrobe the most valued and desirable part of the home.







Leather as protagonist: hangers, tie and belt hangers, of varied combinations, define the wardrobe with vivid colour tones.

Customized combinations inside the wardrobe: an alternation of empty and full spaces, of precious fabrics and refined details.



Aluminium drawers with glass frontal and glass bottom. Fine materials which, together with the special attention to details visible between side and frontal, produce a unique and futuristic drawer.





Items included in COMBINATION 1

HANG



Women's suit hanger  
with skirt clips.  
Genuine leather insert.



Men's suit hanger  
with trouser bar.  
Genuine leather insert.



Skirt hanger.  
Genuine leather insert.



Trousers hanger.  
Genuine leather insert.



Scarves and headscarves  
hanger



Tie and belt hanger



Bags hanger



Hanger rod.  
Genuine leather sleeve.

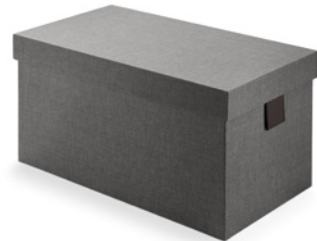


Hanger rod with hook.  
Genuine leather sleeve.

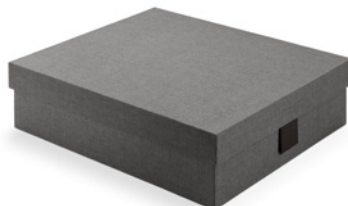


Tie hanger rod with  
genuine leather supports

CONTAIN



Box with tab made of imitation leather  
- Bottom dimensions (mm):  
250x465 H 255  
- Top dimensions (mm):  
260x480 H 50



Box with tab made of imitation leather  
- Bottom dimensions (mm):  
390x465 H 125  
- Top dimensions (mm):  
400x480 H 50



Box with tab made of imitation leather  
- Bottom dimensions (mm):  
390x465 H 255  
- Top dimensions (mm):  
400x480 H 50



Tray with tab and frontal made of imitation leather  
- Dimensions (mm): 350x400 H 80



Tray with tab and frontal made of imitation leather  
- Dimensions (mm): 350x400 H 120

STORE



Multi-purpose tray with internal divider  
Material: imitation leather



Multi-purpose tray with 5 internal dividers  
Material: imitation leather



Earring- and ring-holder tray  
Material: imitation leather

STORE



Bottom for drawers, shelves and metal shoe racks  
Material: imitation leather



Drawer bottom with 3 dividers  
Material: imitation leather

PROTECT



Coat-holder bag with pleats

PULL-OUT



Aluminium 3-sided drawer H 78  
GLASS FRONTAL H 100



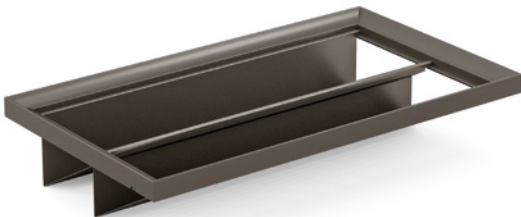
Aluminium 3-sided drawer H 128  
GLASS FRONTAL H 150



Aluminium 4-sided drawer H 128



Bed linen storage for aluminium 4-sided drawer H 52



Shoe rack for aluminium 4-sided drawer H 52

SHELVES



Shelf with aluminium frame



Hanger rail for clothes and rail-holder supports  
for shelf with aluminium frame







The aluminium hanger rod and the special processing of the support, make the wardrobe design even more beautiful.

Object-holder trays, skillfully combined and placed on bottoms made of imitation leather: elegant and refined elements which harmoniously continue the smooth contours of the drawer profile.



Glass and light, adjustable and modular, amplify the wardrobe aesthetics. The illuminated glass shelves with their distinct lines sharply divide the various spaces and highlight every element. The lighting system is perfectly concealed.





Items included in COMBINATION 2

HANG



Women's suit hanger with skirt clips.  
Genuine leather insert.



Men's suit hanger with trouser bar.  
Genuine leather insert.



Skirt hanger.  
Genuine leather insert.



Trousers hanger.  
Genuine leather insert.



Scarves and headscarves hanger



Tie and belt hanger



Bags hanger



Hanger rod.  
Genuine leather sleeve.



Hanger rod with hook.  
Genuine leather sleeve.



Tie hanger rod with  
genuine leather supports

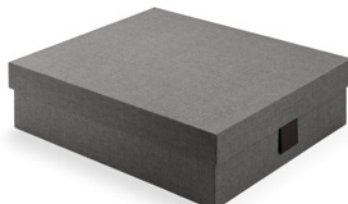


Swivel hanger fixed  
under the shelf

CONTAIN



Box with tab made of imitation leather  
- Bottom dimensions (mm):  
250x465 H 255  
- Top dimensions (mm):  
260x480 H 50



Box with tab made of imitation leather  
- Bottom dimensions (mm):  
390x465 H 125  
- Top dimensions (mm):  
400x480 H 50



Box with tab made of imitation leather  
- Bottom dimensions (mm):  
390x465 H 255  
- Top dimensions (mm):  
400x480 H 50



Tray with tab and frontal made of imitation leather  
- Dimensions (mm): 350x400 H 80



Tray with tab and frontal made of imitation leather  
- Dimensions (mm): 350x400 H 120

STORE



Multi-purpose tray with internal divider  
Material: imitation leather



Multi-purpose tray with 3 internal dividers  
Material: imitation leather



Multi-purpose tray with 4 internal dividers  
Material: imitation leather



Multi-purpose tray with 5 internal dividers  
Material: imitation leather



Ring-holder tray  
Material: imitation leather



Earring-holder tray  
Material: imitation leather



STORE



Earring- and ring-holder tray  
Material: imitation leather



Watch-holder tray  
Material: imitation leather



Bottom for drawers, shelves and metal shoe racks  
Material: imitation leather



Drawer bottom with 3 dividers  
Material: imitation leather

PROTECT



Coat-holder bag with pleats

PULL-OUT



Aluminium 3-sided drawer H 128  
WOODEN FRONTAL H 150



Aluminium 3-sided drawer H 128  
GLASS FRONTAL H 150



Aluminium 4-sided drawer H 78



Bed linen storage for aluminium 4-sided drawer H 52



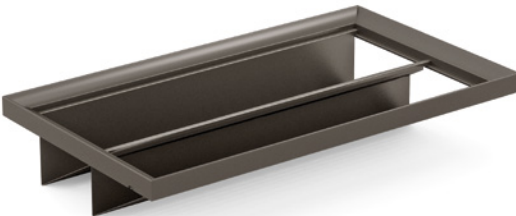
Aluminium 3-sided drawer H 78  
GLASS FRONTAL H 100



Aluminium 4-sided drawer H 52



Trousers hanger and/or skirt hanger  
for aluminium 4-sided drawer H 52

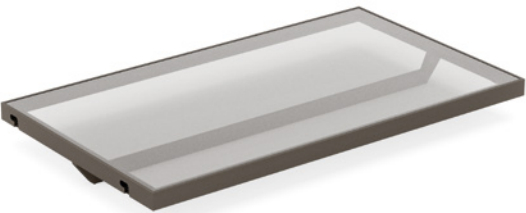


Trousers hanger for aluminium 4-sided drawer H 52

SHELVES



Shelf with aluminium frame



Hanger rail for clothes  
for shelf with aluminium frame





CASUAL AMBIENCE | COMBINATION 1

PRICE GUIDE 



CASUAL AMBIENCE | COMBINATION 2

PRICE GUIDE  



LIGHT AMBIENCE | COMBINATION 1

PRICE GUIDE   



LIGHT AMBIENCE | COMBINATION 2

PRICE GUIDE    



HIGH-END AMBIENCE | COMBINATION 1

PRICE GUIDE     



HIGH-END AMBIENCE | COMBINATION 2

PRICE GUIDE      



LUXURY AMBIENCE | COMBINATION 1

PRICE GUIDE      



LUXURY AMBIENCE | COMBINATION 2

PRICE GUIDE       



FINISHES

Store - Imitation leather

MOKA BROWN



ELEPHANT GREY



TAUPE BROWN



KHAKI BROWN



CAMEL

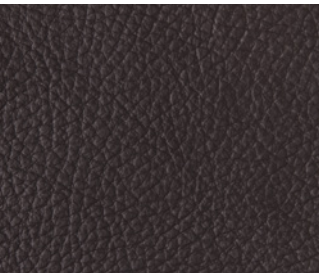


TOFFEE WHITE

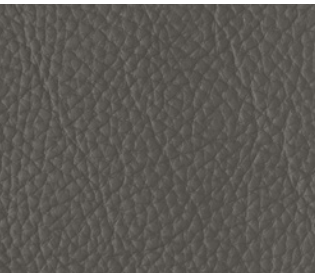


Hang - Genuine leather

MOKA BROWN



ELEPHANT GREY



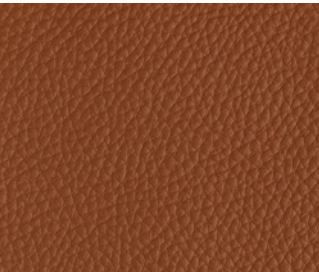
TURTLE-DOVE GREY



KHAKI BROWN



CAMEL



FLAX GREY



Protect - Fabric 100% cotton

STONEWARE GREY



BRICK BROWN



NATURAL LINEN

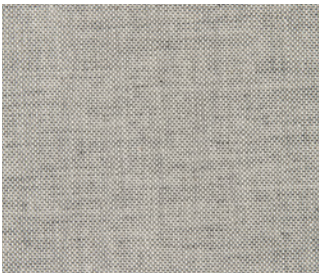


Contain - Fabric

TASMANIA GREY



FLAX GREY



BROWN



EARTH BROWN



PUMPKIN ORANGE



PEARLESCENT BRICK



UNBLEACHED LINEN



















**Digital contents**

DOCASS014ENG  
Ed. 05 - 04/2023



**[www.salice.com](http://www.salice.com)**