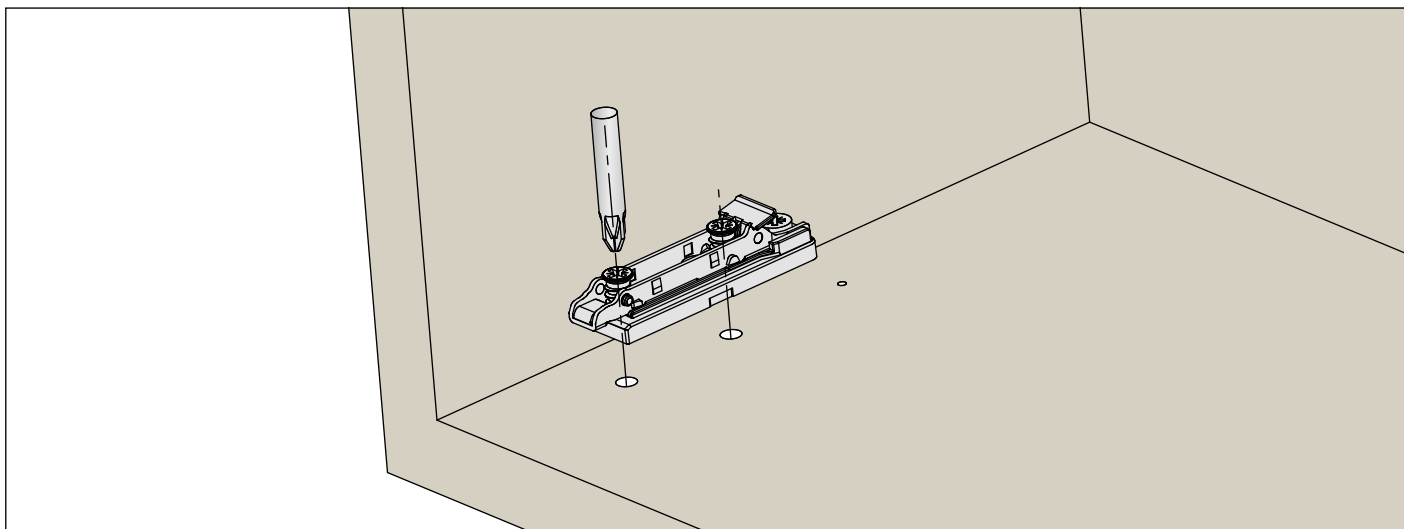
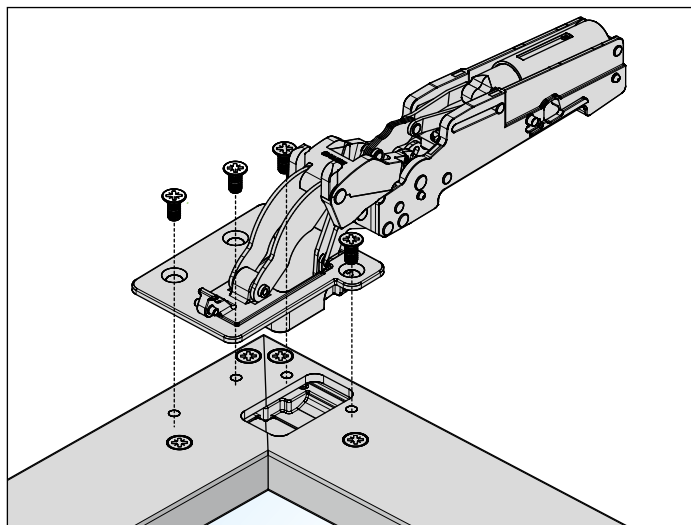
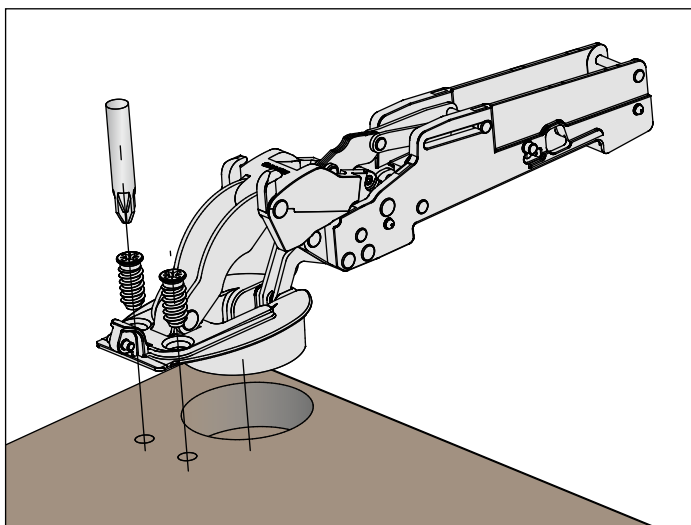


### Fixing the mounting plate to the cabinet

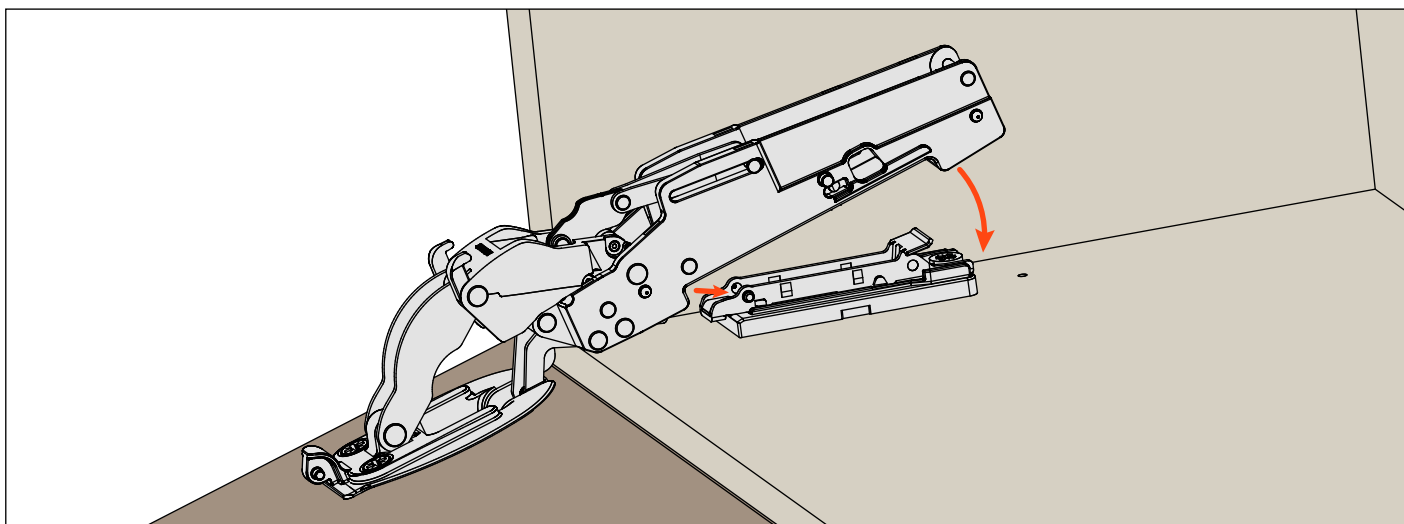


### Fixing the hinge to the door

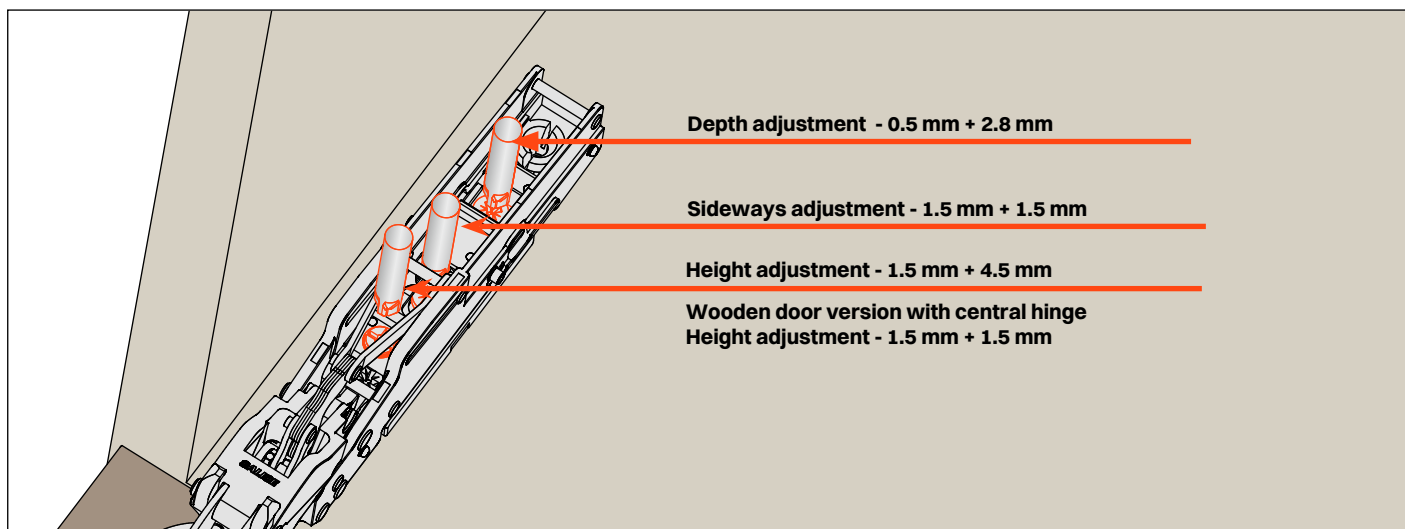


### Mounting the door onto the cabinet

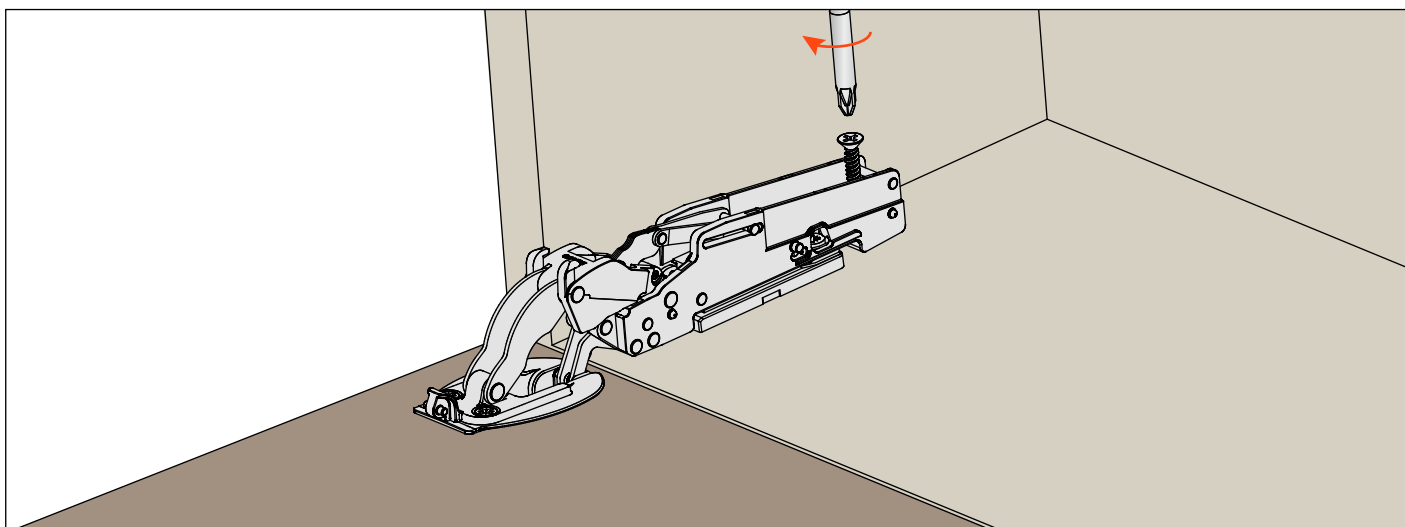
Clip the hinge arm onto the mounting plates. This operation is tool free.



## Adjustments

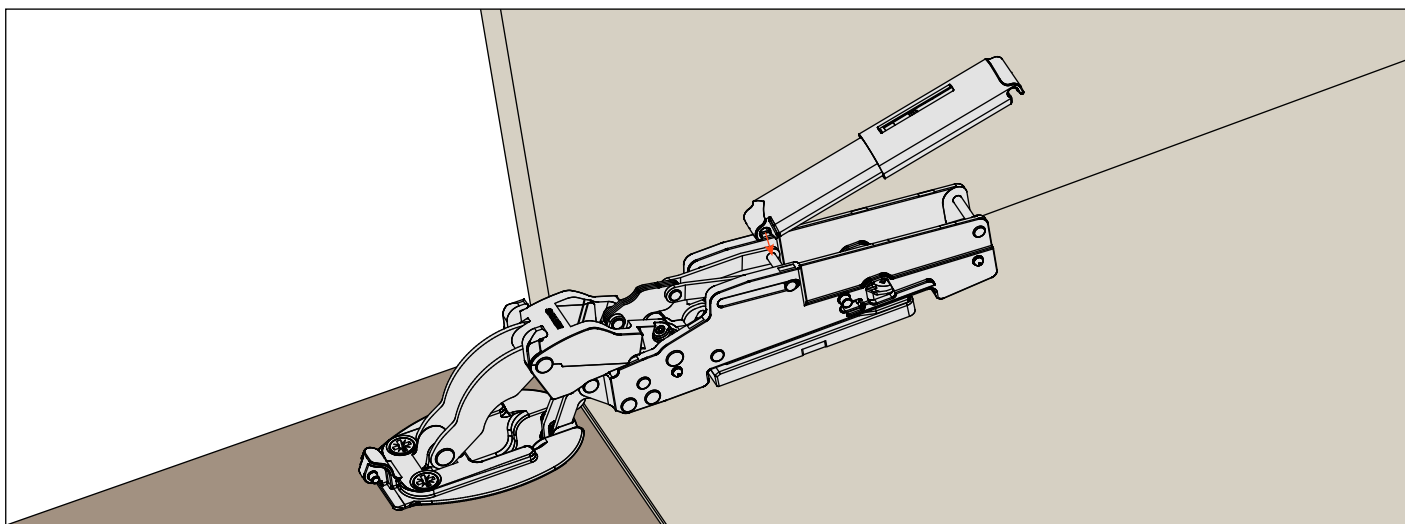


## Fix the security screw



## Installing the Smove

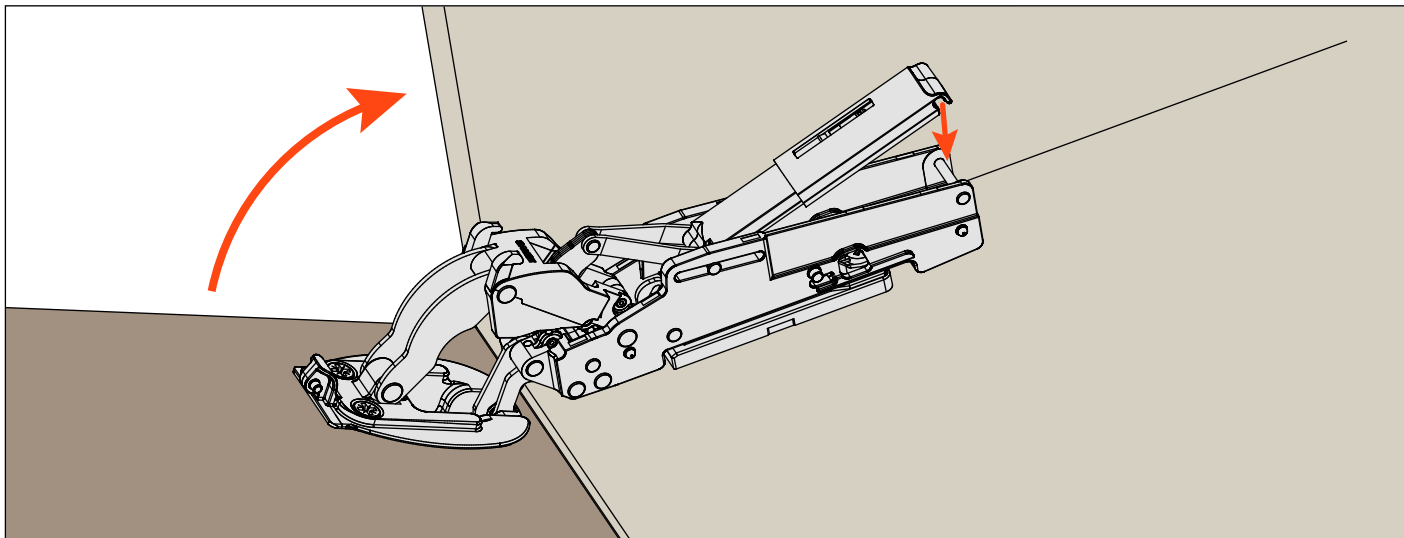
Clip the narrow end of the Smove into position. This operation is tool free.



# Pacta

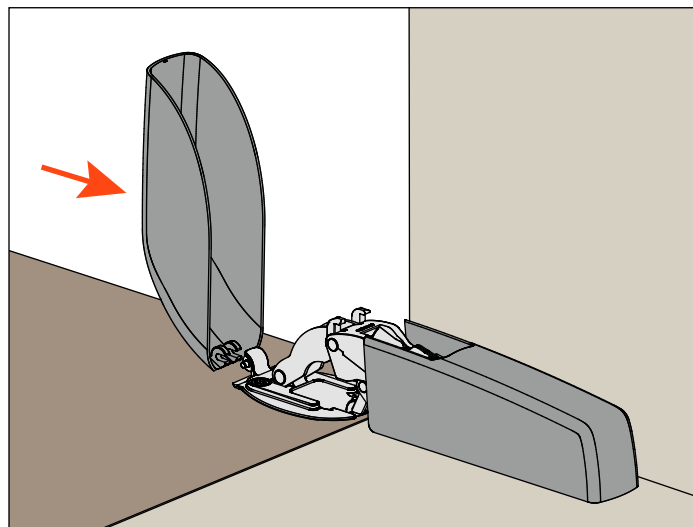
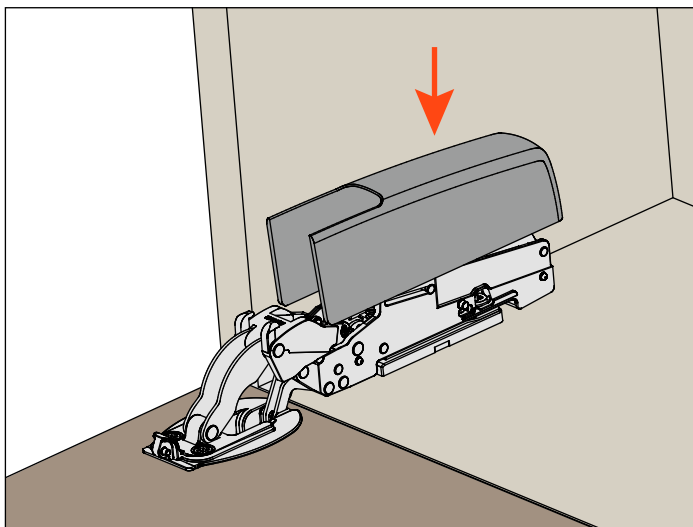
## Assembly instructions

Lift the flap slightly and clip the other end of the Smove into position. This operation is tool free.

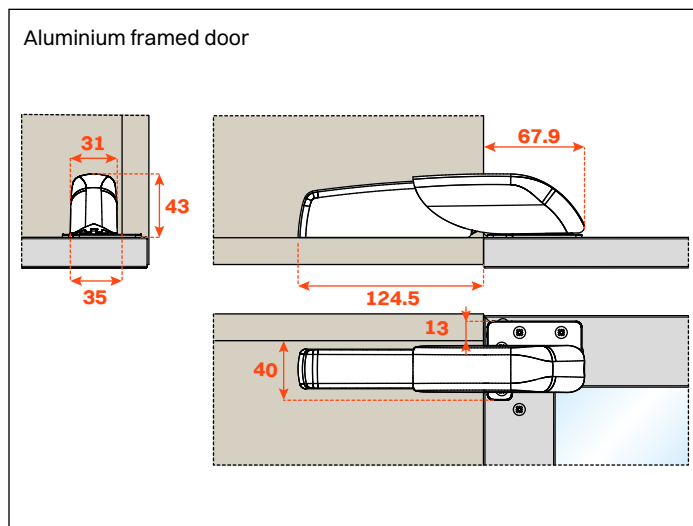
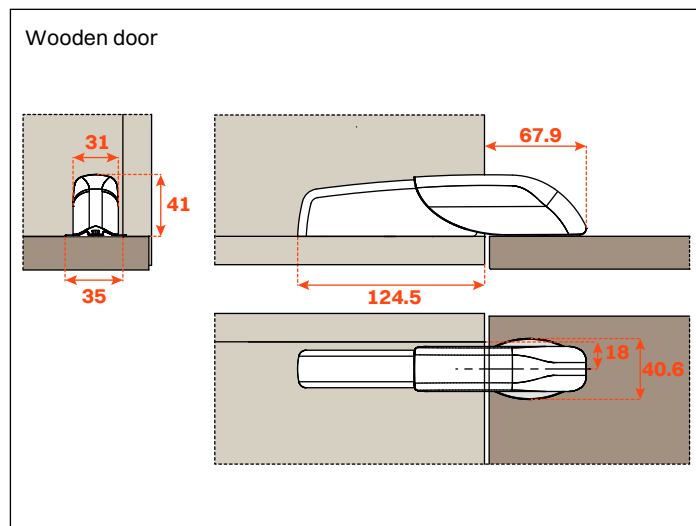


### Installing the cover

Firstly install the cover on the hinge arm and then to the cup.



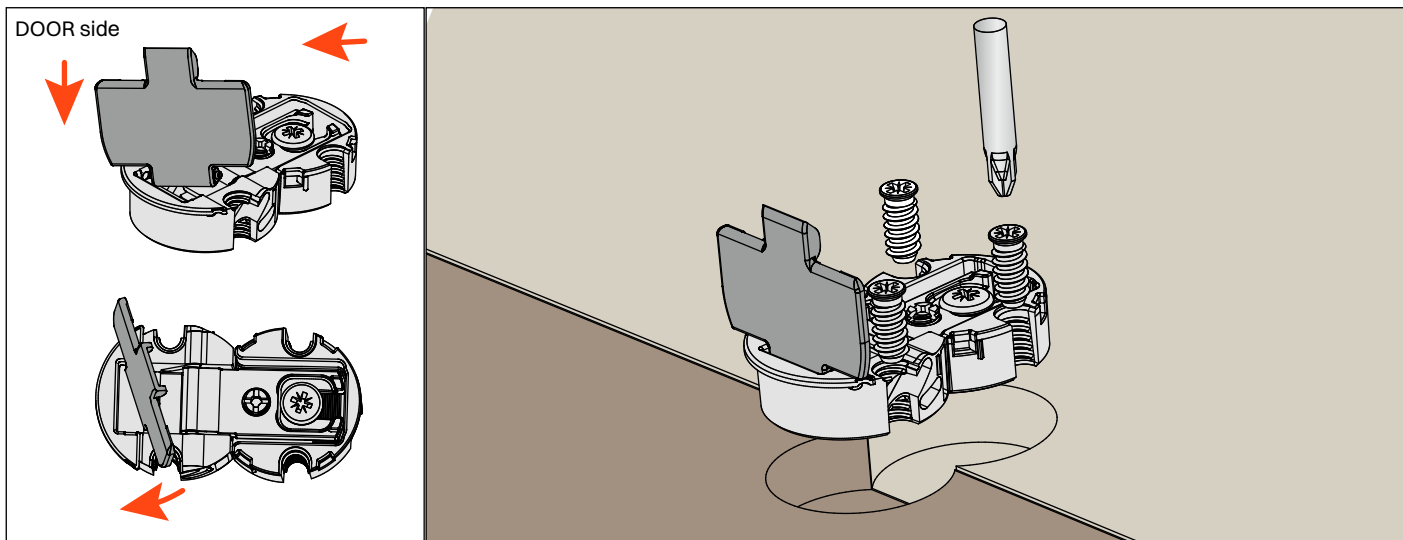
### Dimensions



## Assembly instructions for the central hinge only for wooden doors

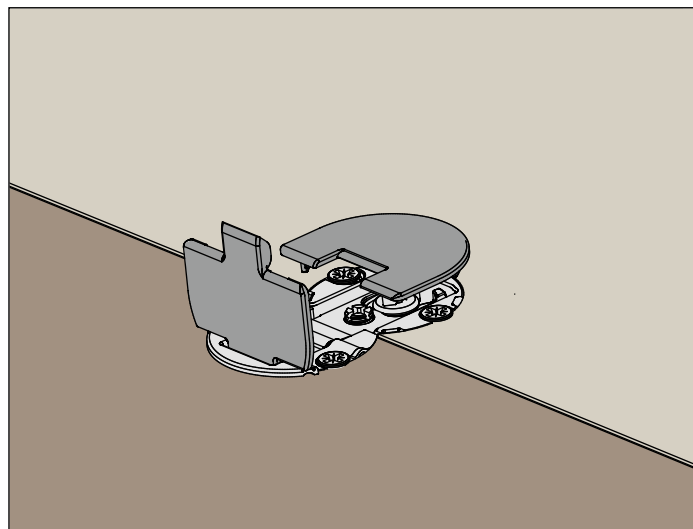
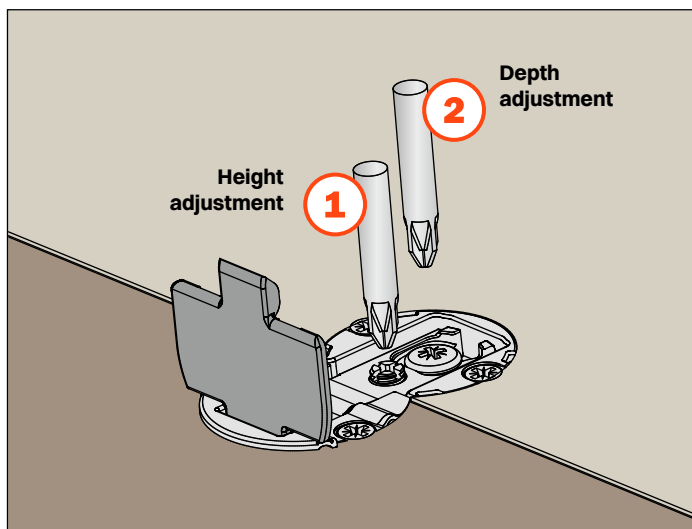
### Application of the central hinge

We suggest that you use the central hinge for cabinets over 900 mm width. Install the cover cap onto the hinge according to the drawing and then screw-fix the hinge to the cabinet.

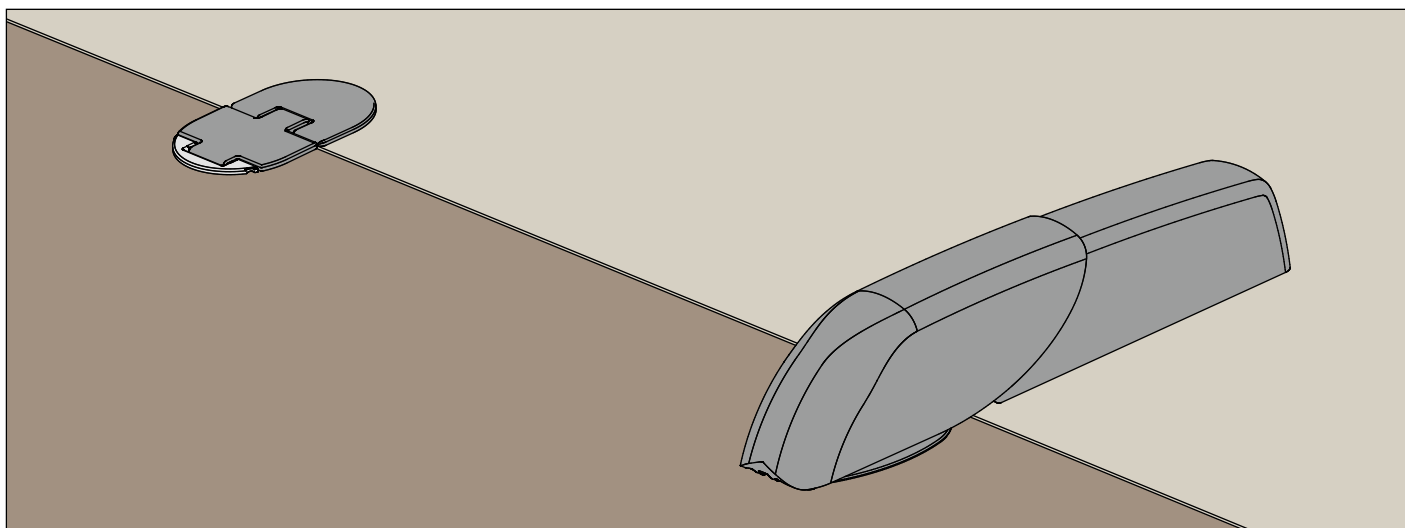


After fixing the hinge, make any adjustments required

Install the cover cap onto the hinge on the cabinet side



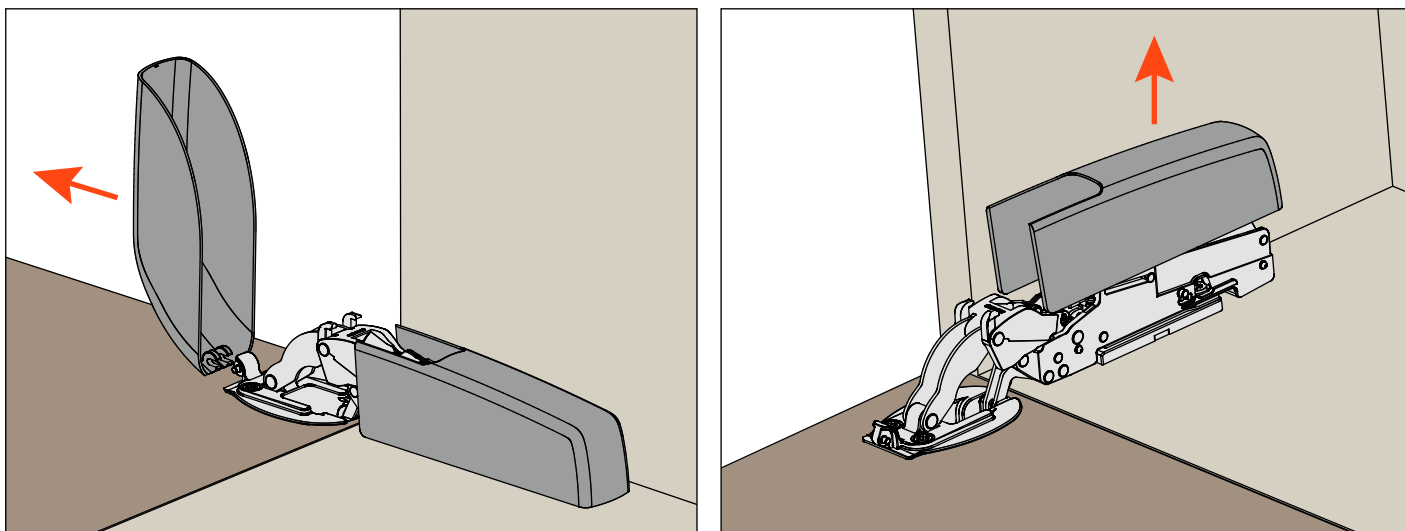
Overall view of the mounted hinges.



## Pacta

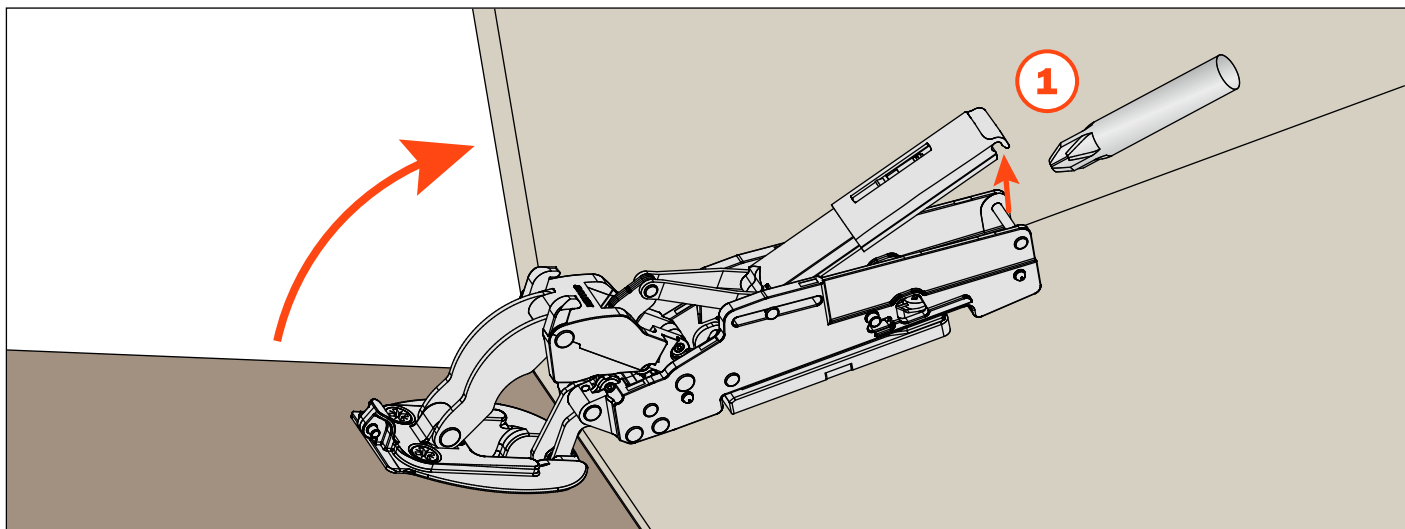
Disassembly instructions

### Removal of the cover

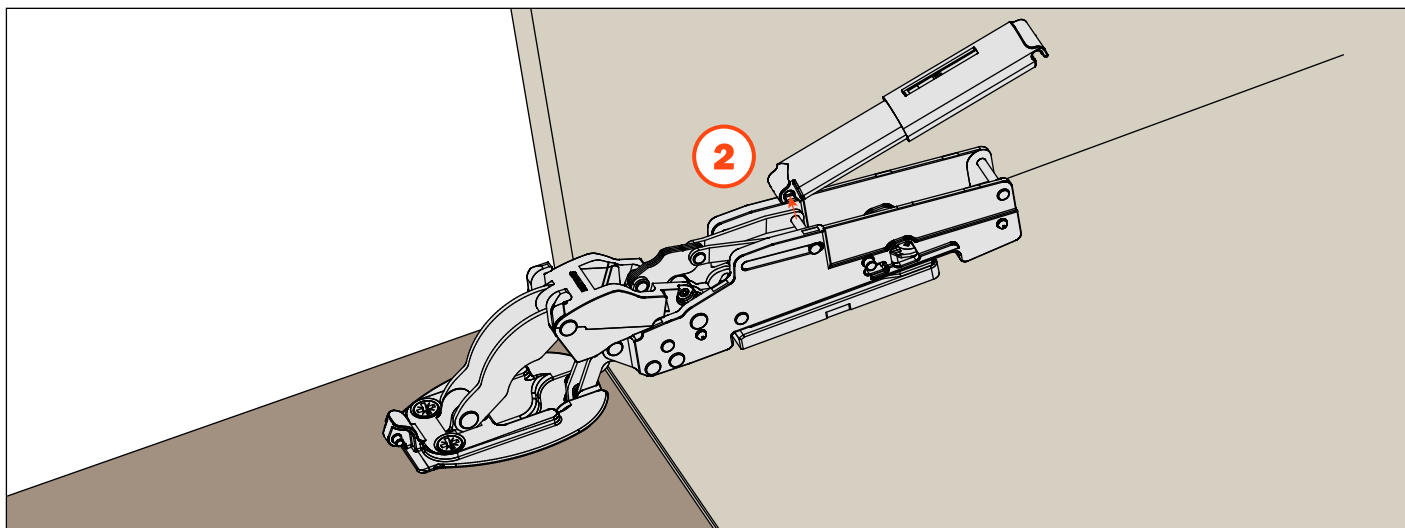


### Disassembly of the Smove

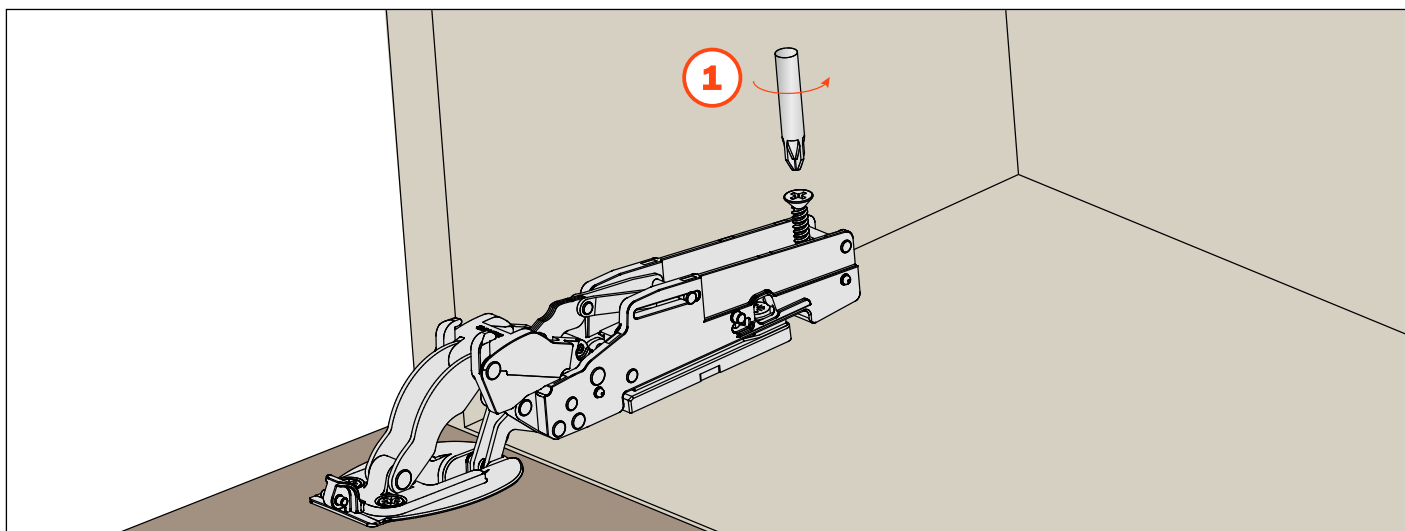
Lift the flap slightly and unclip the back of the Smove using a screwdriver.



Remove the other end of the Smove.



Remove the security screw



Unfasten the hinge from the mounting plate with a screwdriver

