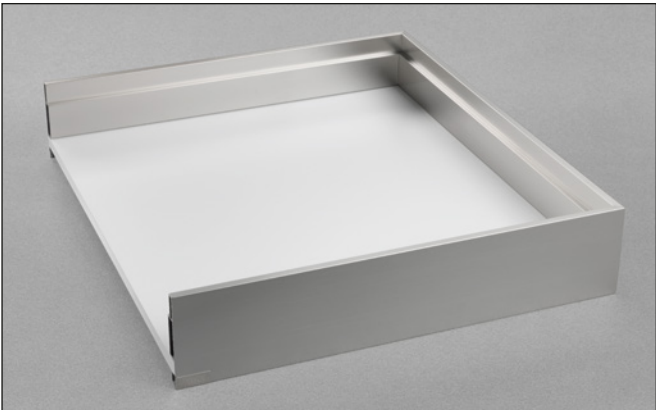


## **Lineabox<sup>Easy</sup> - 3-Sided**

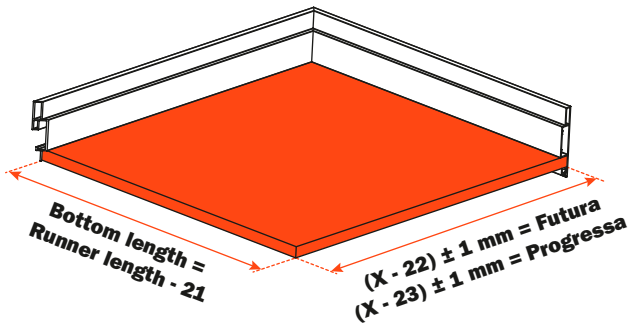
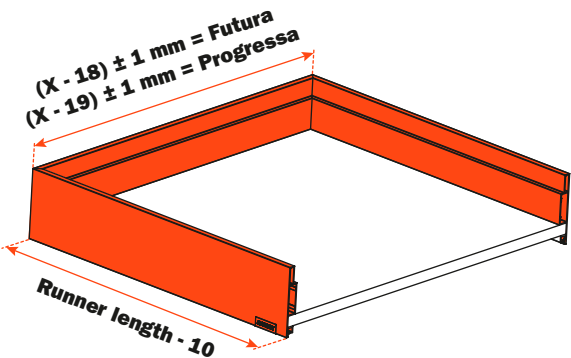
Lineabox Easy - 3-Sided - H 101 mm



**Lineabox Easy metal sides, wooden bottom.**  
**Height of the side 101 mm - Internal height 72 mm.**  
**For use with Progressa and Futura full-extension runners.**








- Supplied in 3 metre length side and back profiles or cut to length
- The back can be modified according to the width of the cabinet
- Rapid assembly system, with no machinery needed
- Available template for the drilling of the drawer frontal (optional)
- Rapid mounting and removal of drawer frontal
- Height, sideways and depth adjustment of the drawer incorporated in the runner fixing clips
- Bottom thickness: 16 mm
- Material: aluminium
- Sides and back: 45° mitre cut end
- Finishes: White - Slate grey - Champagne - Stainless steel

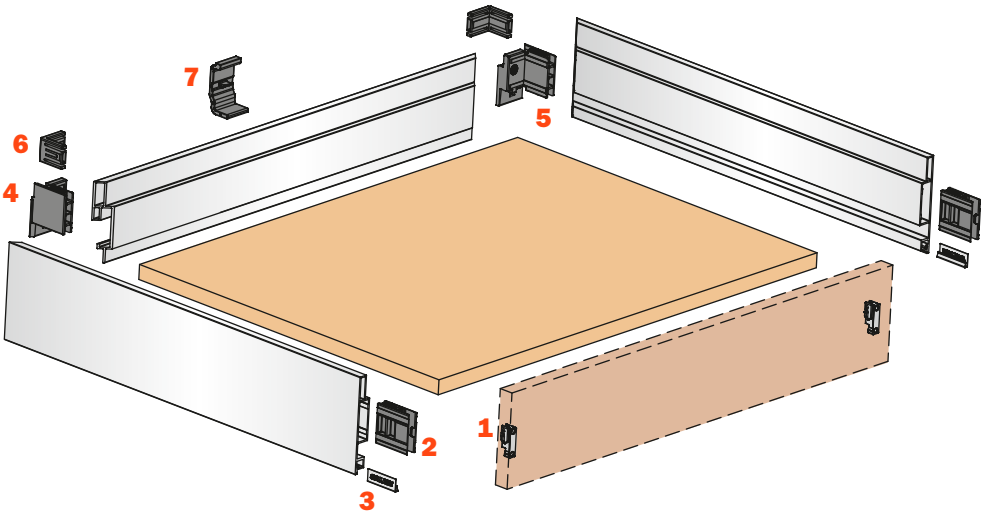
Setting of the back and the bottom of the drawer



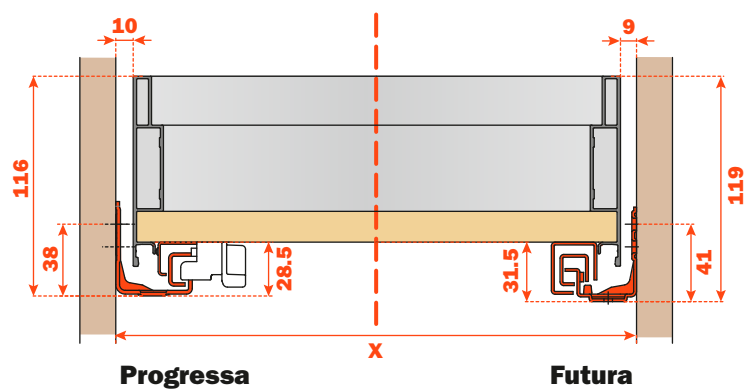
X = Internal width of the cabinet

Elements of the drawer

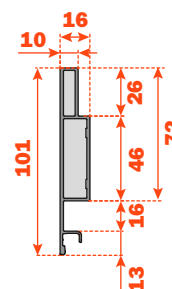
<b>1</b> 	<b>SMGR12AGXA</b> Screw-on frontal and back fixing <b>SMGR12AGCA</b> Knock-in frontal and back fixing	2 pcs.
<b>2</b> 	<b>AMGPXA3</b> Frontal and back connecting fitting	2 pcs.
<b>3</b> 	<b>SCCX83H9</b> (Nickel-plated) <b>SCCX83H6</b> (Titanium) Cover cap with embossed logo <b>SCCX83H9</b> (Nickel-plated) Cover cap with silk-screen printed logo	2 pcs.
<b>4</b> 	<b>AMGPSP3</b> Left back connecting fitting	1 pcs.
<b>5</b> 	<b>AMGPDP3</b> Right back connecting fitting	1 pcs.
<b>6</b> 	<b>SMGP89P3MA</b> Medium corner connector	2 pcs.
<b>7</b> 	<b>AMSRX33</b> Reinforcing support for the bottom of the drawer	1 pcs.



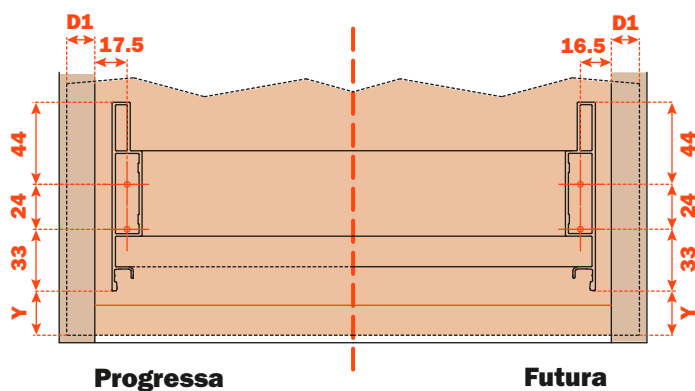
## Dimensions



## Dimensions of the metal side



## Frontal drilling

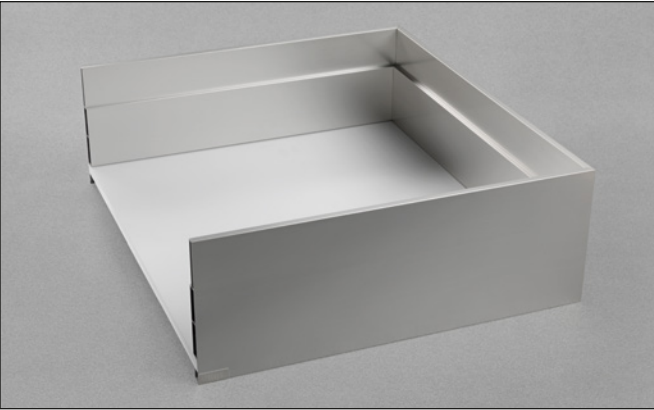


**D1 = Frontal overlay on side of the cabinet**

**Y = Distance from the lower edge of the frontal to the Lineabox Easy side**

The drilling of the frontal can be done using the **AGDLXA6 template**.

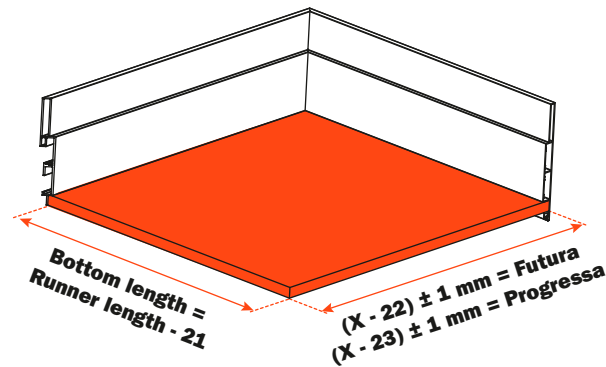
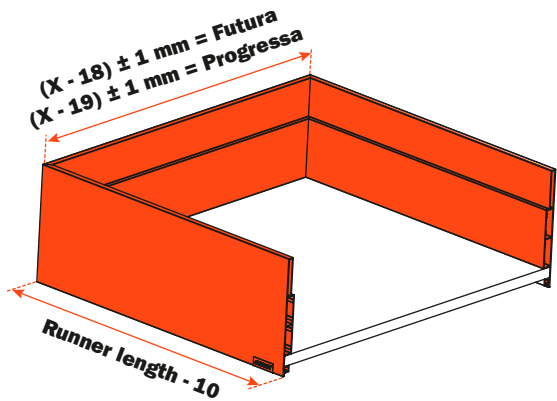
Lineabox Easy - 3-Sided - H 178 mm



**Lineabox Easy metal sides, wooden bottom.**  
**Height of the side 178 mm - Internal height 149 mm.**  
**For use with Progressa and Futura full-extension runners.**

- Supplied in 3 metre length side and back profiles or cut to length
- The back can be modified according to the width of the cabinet
- Rapid assembly system, with no machinery needed
- Available template for the drilling of the drawer frontal (optional)
- Rapid mounting and removal of drawer frontal
- Height, sideways and depth adjustment of the drawer incorporated in the runner fixing clips
- Bottom thickness: 16 mm
- Material: aluminium
- Sides and back: 45° mitre cut end
- Finishes: White - Slate grey - Champagne - Stainless steel

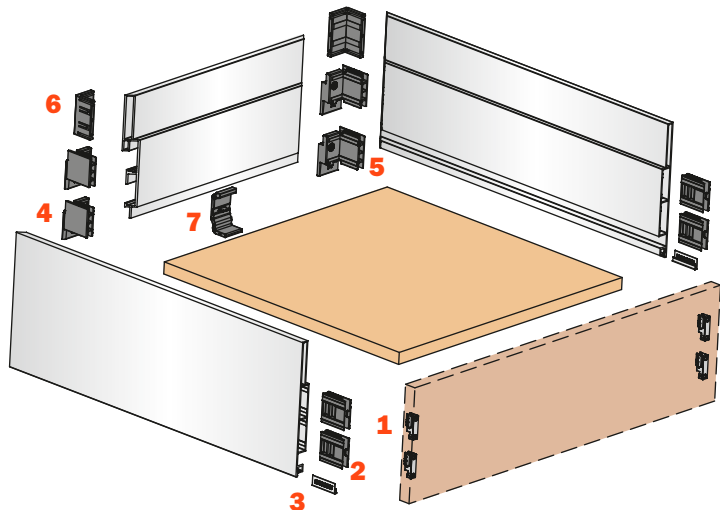
Setting of the back and the bottom of the drawer



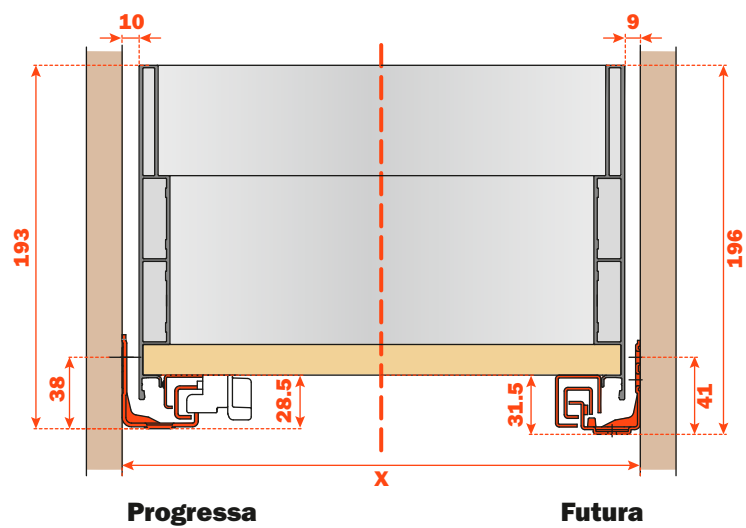
X = Internal width of the cabinet

Elements of the drawer

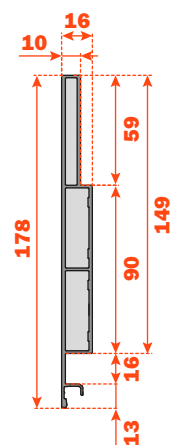
<b>1</b>	<b>SMGR12AGXA</b> Screw-on frontal and back fixing <b>SMGR12AGCA</b> Knock-in frontal and back fixing	4 pcs.
<b>2</b>	<b>AMGPXA3</b> Frontal and back connecting fitting	4 pcs.
<b>3</b>	<b>SCCX83H9</b> (Nickel-plated) <b>SCCX83H6</b> (Titanium) Cover cap with embossed logo <b>SCXX83H9</b> (Nickel-plated) Cover cap with silk-screen printed logo	2 pcs.
<b>4</b>	<b>AMGPSP3</b> Left back connecting fitting	2 pcs.
<b>5</b>	<b>AMGPDP3</b> Right back connecting fitting	2 pcs.
<b>6</b>	<b>SMGP89P3AA</b> High corner connector	2 pcs.
<b>7</b>	<b>AMSRX33</b> Reinforcing support for the bottom of the drawer	1 pcs.



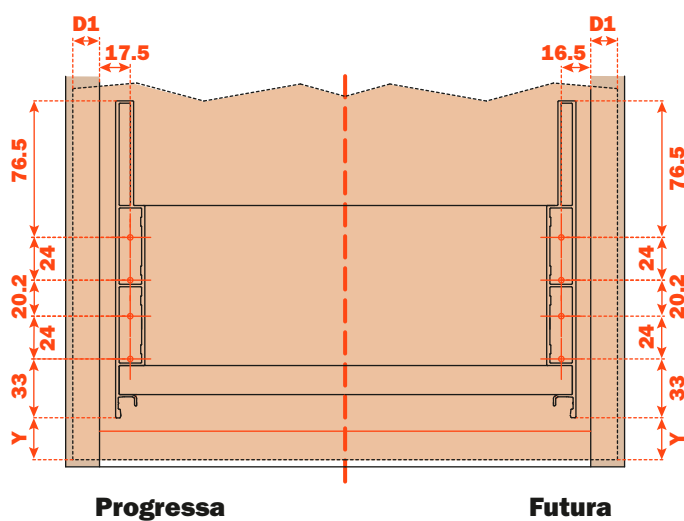
## Dimensions



## Dimensions of the metal side



## Frontal drilling

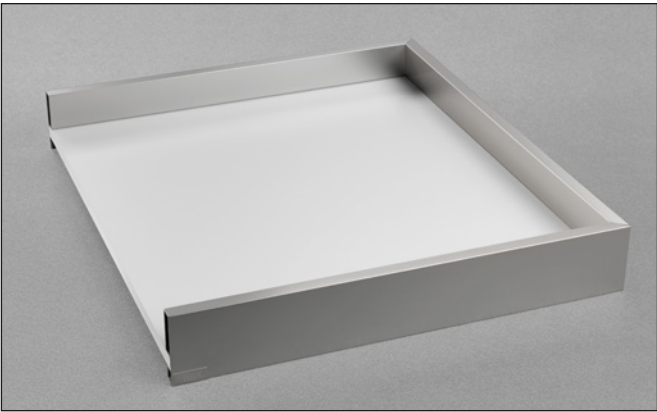


**D1 = Frontal overlay on side of the cabinet**

**Y = Distance from the lower edge of the frontal to the Lineabox Easy side**

The drilling of the frontal can be done using the **AGDLXA6** template.

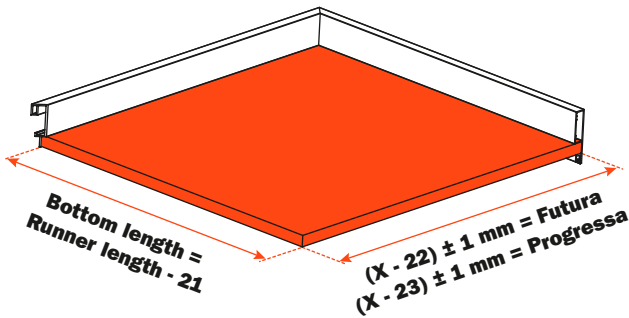
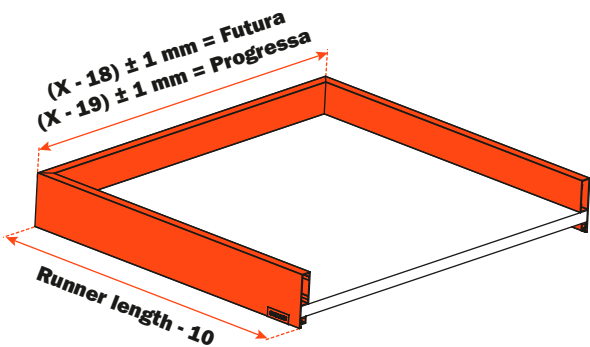
Lineabox Easy - 3-Sided - H 75 mm



**Lineabox Easy metal sides, wooden bottom.**  
**Height of the side 75 mm - Internal height 46 mm.**  
**For use with Progressa and Futura full-extension runners.**

- Supplied in 3 metre length side and back profiles or cut to length
- The back can be modified according to the width of the cabinet
- Rapid assembly system, with no machinery needed
- Available template for the drilling of the drawer frontal (optional)
- Rapid mounting and removal of drawer frontal
- Height, sideways and depth adjustment of the drawer incorporated in the runner fixing clips
- Bottom thickness: 16 mm
- Material: aluminium
- Sides and back: 45° mitre cut end
- Finishes: White - Slate grey - Champagne - Stainless steel

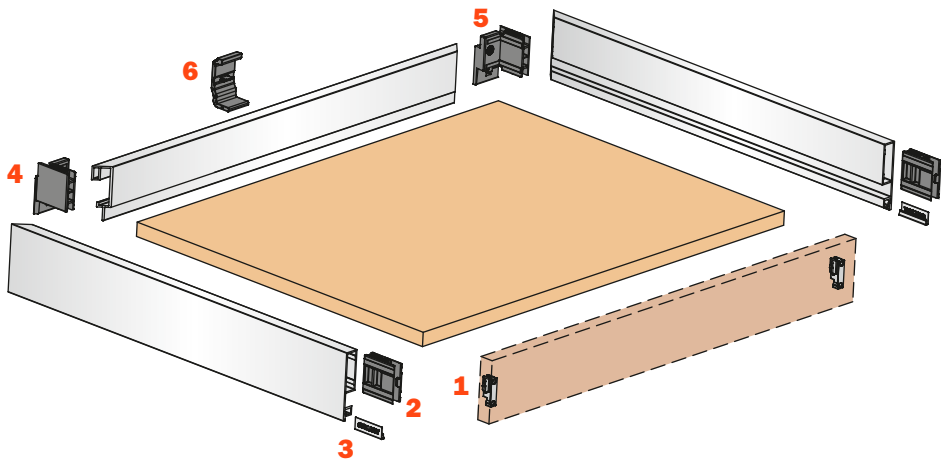
Setting of the back and the bottom of the drawer



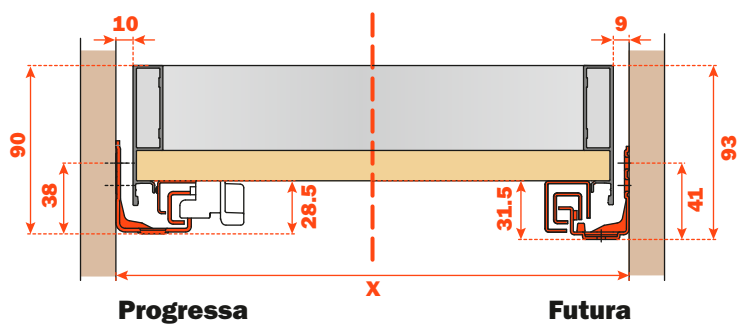
X = Internal width of the cabinet

Elements of the drawer

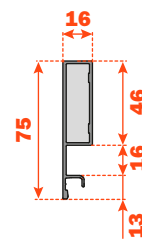
<b>1</b>	<b>SMGR12AGXA</b> Screw-on frontal and back fixing <b>SMGR12AGCA</b> Knock-in frontal and back fixing	2 pcs.
<b>2</b>	<b>AMGPXA3</b> Frontal and back connecting fitting	2 pcs.
<b>3</b>	<b>SCCX83H9</b> (Nickel-plated) <b>SCCX83H6</b> (Titanium) Cover cap with embossed logo <b>SCXX83H9</b> (Nickel-plated) Cover cap with silk-screen printed logo	2 pcs.
<b>4</b>	<b>AMGPSP3</b> Left back connecting fitting	1 pcs.
<b>5</b>	<b>AMGPDP3</b> Right back connecting fitting	1 pcs.
<b>6</b>	<b>AMSRX33</b> Reinforcing support for the bottom of the drawer	1 pcs.



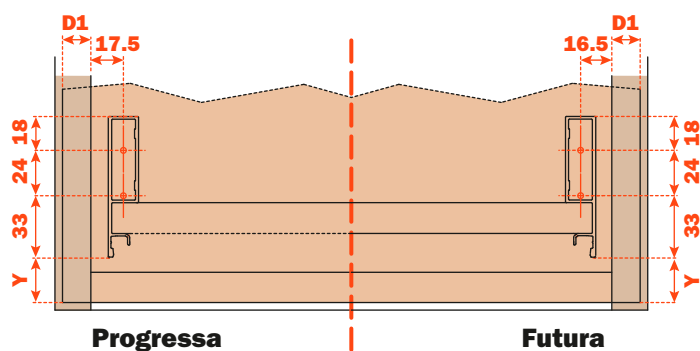
## Dimensions



## Dimensions of the metal side



## Frontal drilling



**D1 = Frontal overlay on side of the cabinet**

**Y = Distance from the lower edge of the frontal to the Lineabox Easy side**

The drilling of the frontal can be done using the **AGDLXA6 template**.