

Lineabox^{Easy}

The innovative aluminium drawer with a timeless design



Lineabox Easy is the **aluminium** drawer by Salice with essential and elegant shapes.

The extremely reduced thickness and the clean and refined aesthetics make it a **versatile and multipurpose** element.

Aluminium, already chosen by Salice in the very first Lineabox version, is among the most eco-sustainable materials known with significant energy saving characteristics and complete recyclability.

Lineabox Easy was born from Salice's effort to implement every value-added optimization to improve the existing product, its performance and the perceived quality of the product.



Lineabox Easy

The innovative aluminium drawer with a timeless design

It is available in 4 different heights in the versions with 2 or 3 sides.

The 2-sided version includes an option that, by hiding the wooden back, further enhances the product.



• Lineabox Easy 2-Sided •

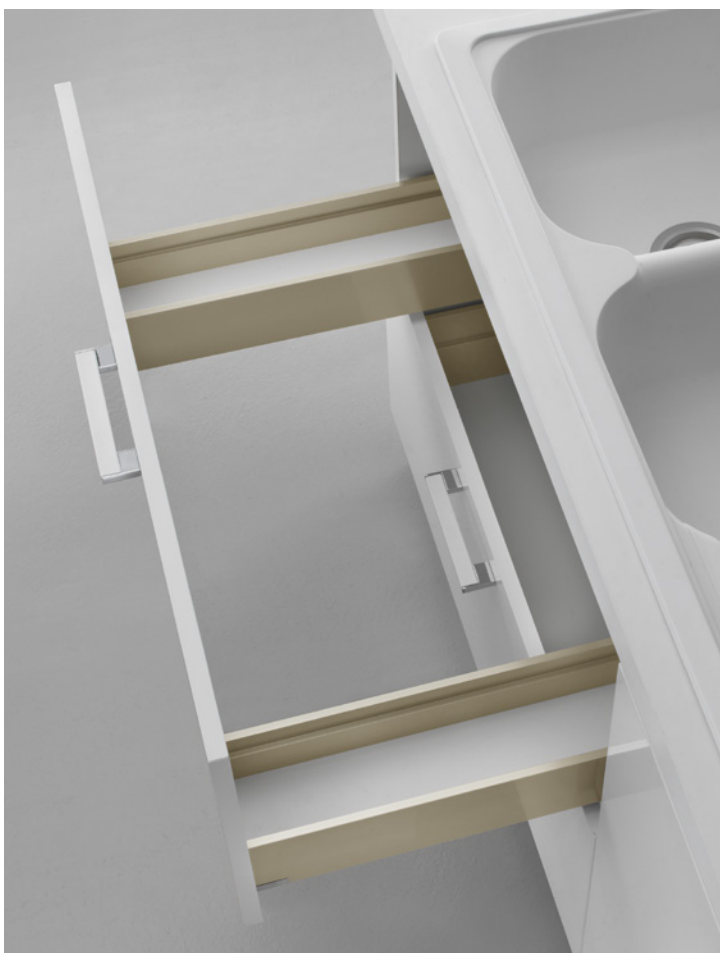


• Lineabox Easy 3-Sided •



• Lineabox Easy 2-Sided - Inset Back •

The Lineabox Easy range is completed by the under-sink version and the front panel for internal drawer, customisable with a decorative insert and also available in a version without insert.



• Lineabox Easy - Under-sink drawer •



• Lineabox Easy - Front panel for internal drawer •
With decorative insert



• Lineabox Easy - Front panel for internal drawer •

The whole range is available in **four finishes**:



• **White** •
Epoxy paint with a matt finish



• **Stainless steel** •
Brushed anodization



• **Champagne** •
Brushed anodization



• **Slate grey** •
New elegant finish. Epoxy paint with a matt finish.

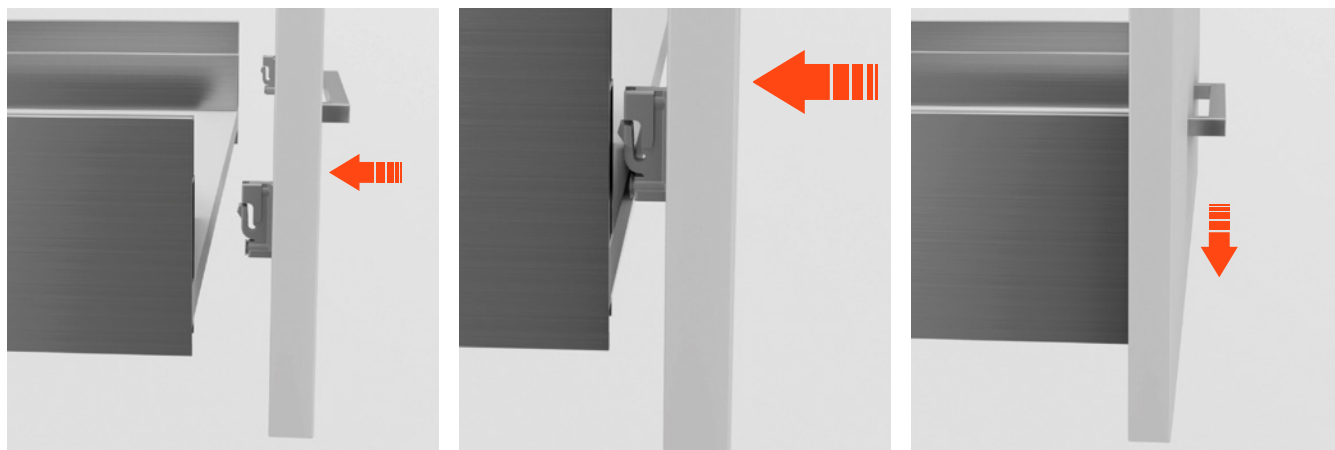
Lineabox Easy The innovative aluminium drawer with a timeless design

The extremely reduced thickness makes Lineabox Easy one of the thinnest drawers on the market.

The frontal fixing elements are inserted inside its structure and therefore no screws are visible.

In addition to the aesthetic element, Lineabox Easy has been designed with some details in order to facilitate the work of our customers:

1. Salice has **renewed the frontal fixing**: a completely re-engineered geometry combined with the use of a technopolymer with above-average performance has made the mounting and the removal of the drawer frontal significantly simpler, increasing resistance and stability even when using high front panels.



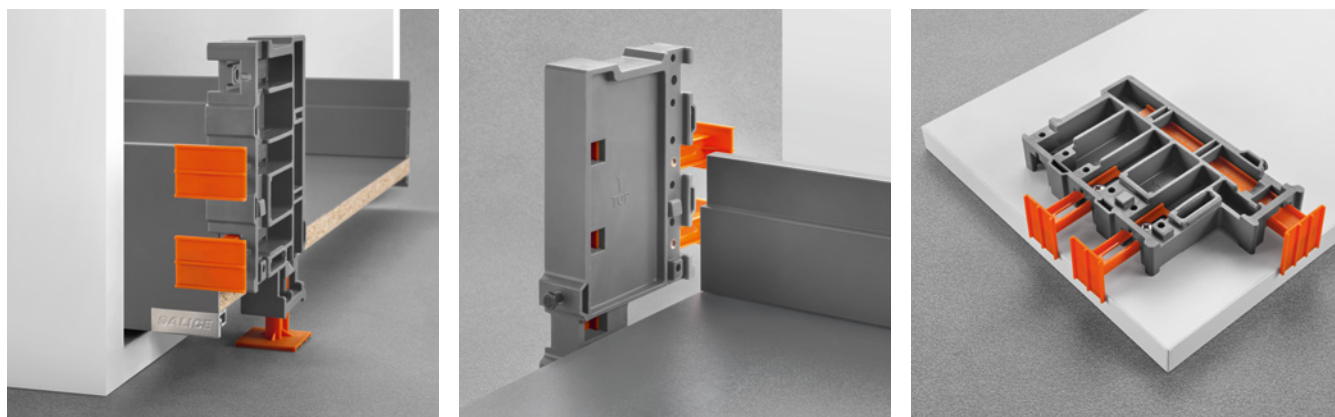
2. Lineabox Easy provides for a progressive simplification of the offer:

1. **Profile cut to length** to ensure a finished and precise item.
2. **Profile cut to length + premounted connecting fitting.**
Small operation, but with great added value: I reduce the assembly time while ensuring the maximum cleanliness in the combination of the elements.
3. **Kit** for the composition of a drawer including a pair of Salice runners: an acceleration in the search times for the order components, in order to produce a state-of-the-art drawer avoiding inefficient warehouses.

There is always the possibility to **create your drawer in complete freedom**, in the name of maximum modularity, to make your project possible starting from the profile.

Lineabox Easy can be assembled quickly with no machinery needed. It is highly customisable and the dimensions of the back can be adapted to the width of the cabinet.

The product is completed by a **template for the drilling of the drawer frontal**; simply insert it into the front of the sides and adjust the sliders to obtain the correct position of the holes on the front panel. Our template, after the measurement phases on the cabinet, is locked on the front panel allowing directly the drilling through the appropriate slots, ensuring the frontal fixing in a precise manner.



The drawer movement is fluid and silent thanks to the runners that complete the assembly:
Futura and Progressa are compatible with Lineabox Easy in all full-extension versions and for all the dimensional variants available in the catalogue.

