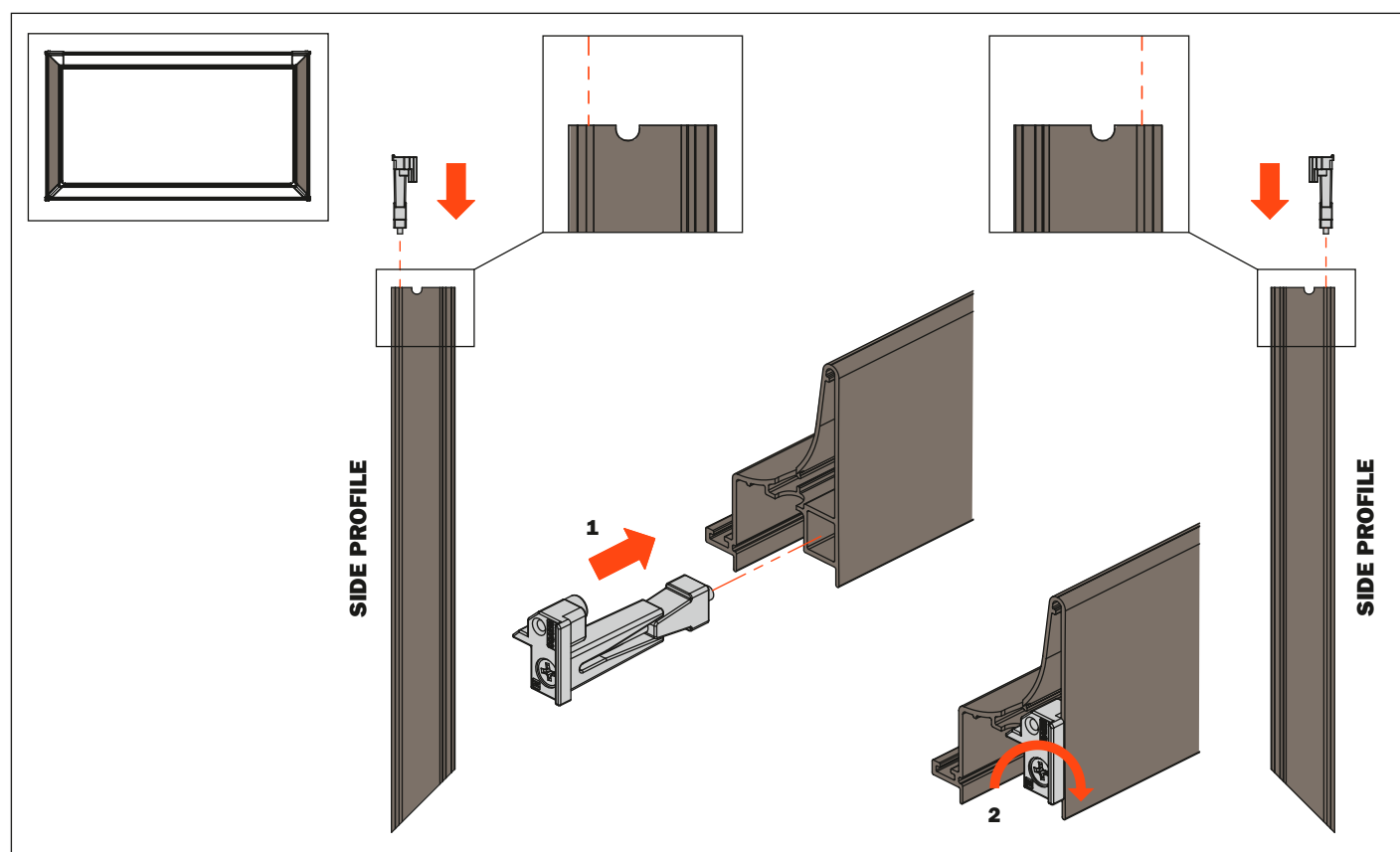
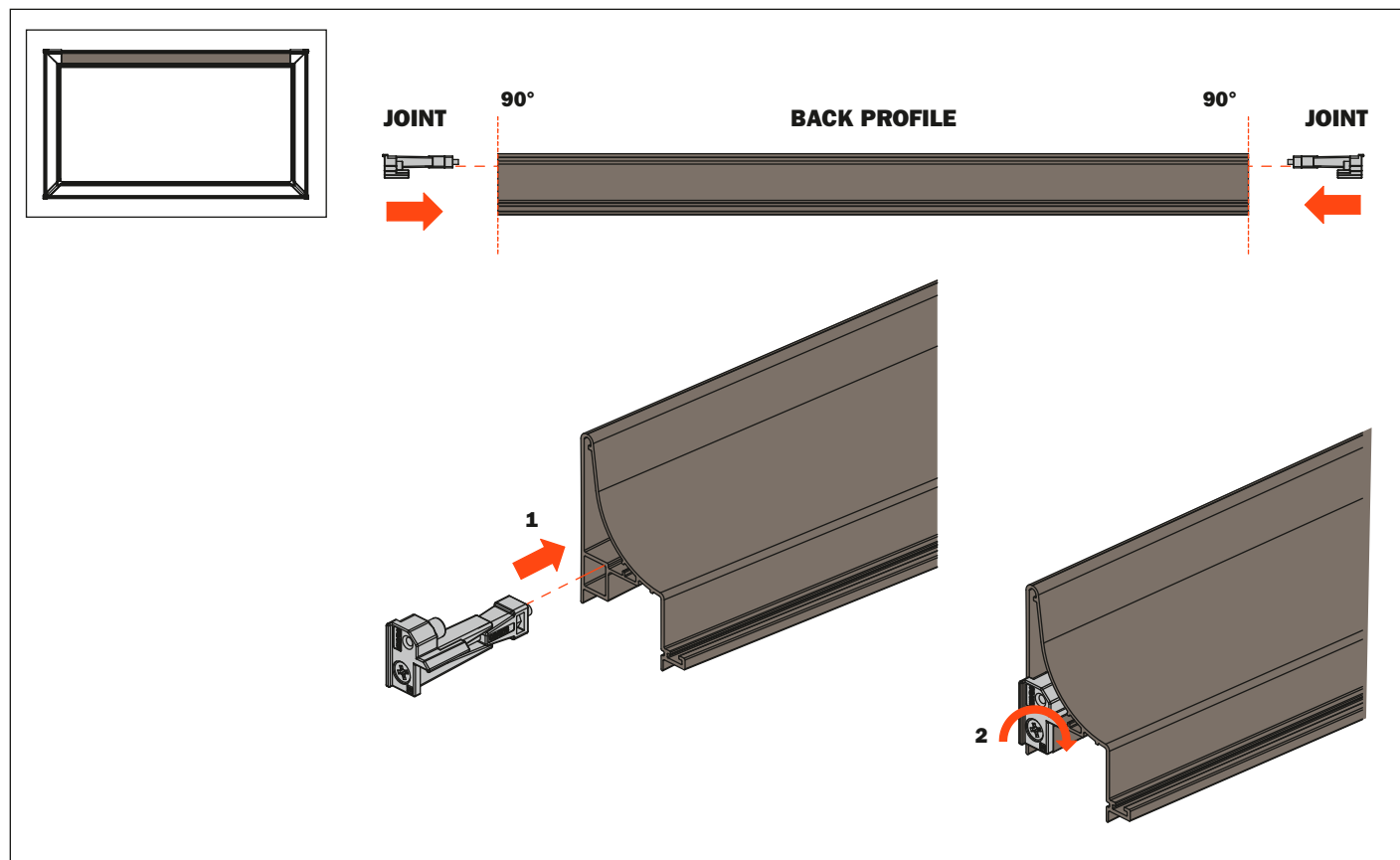


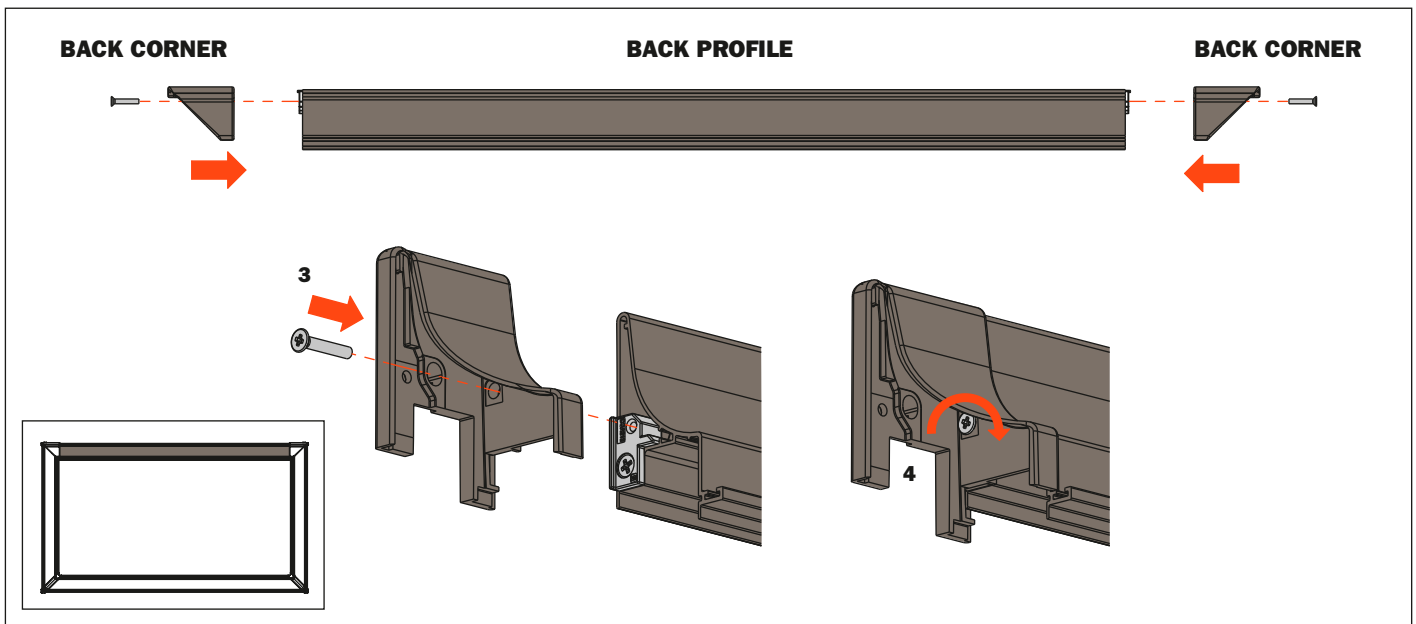
BACK PROFILE

1. Insert the joints into the recess of the back profile and into the side profiles until they reach the stop
Back profile to cut to length, 90° mitre cut end, see pages 31, 33, 35
2. Hold the joints in position and screw to fix

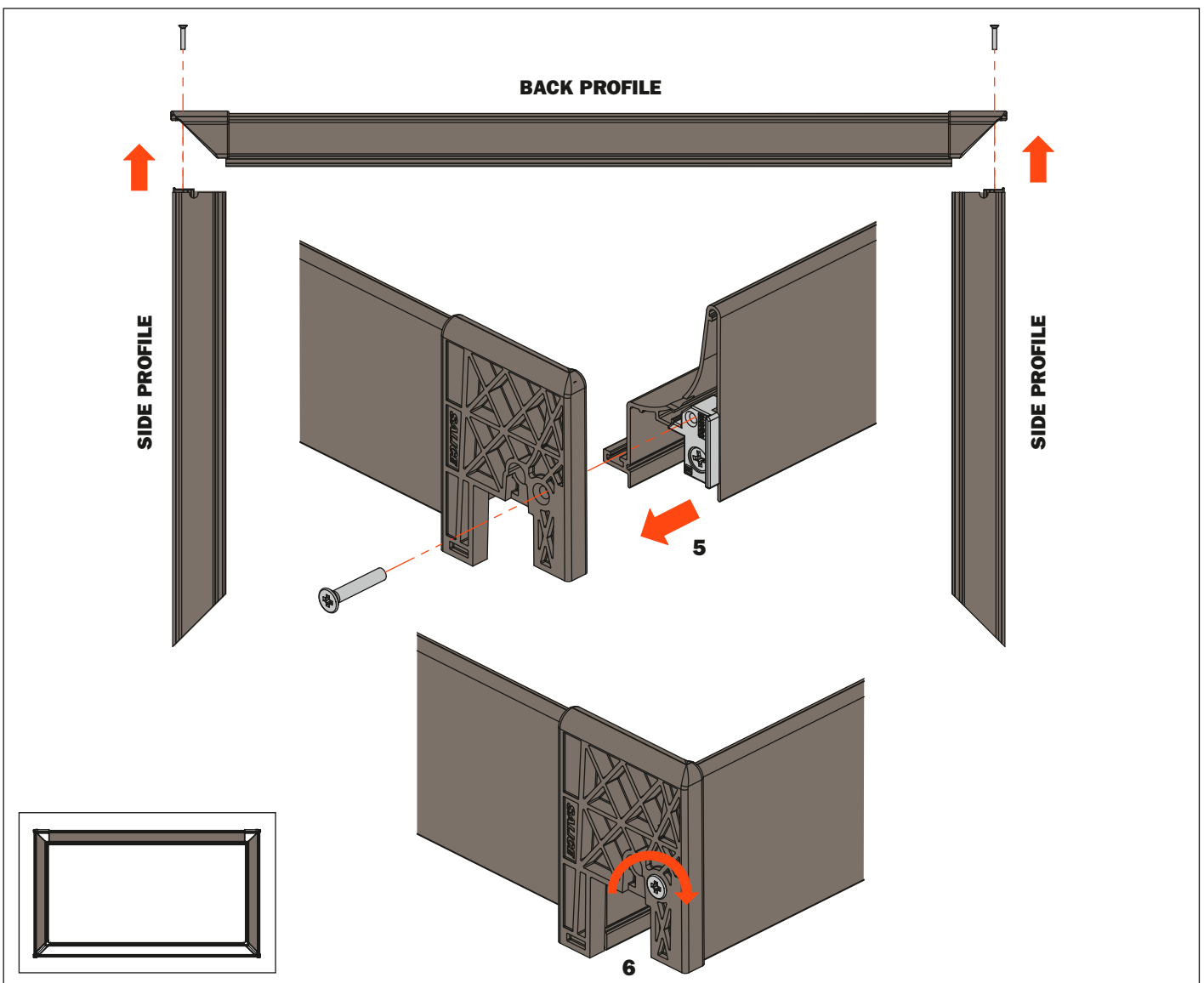


Assembly instructions

3. Insert the back corners onto the back profile until they reach the stop
4. Screw to fix the corners onto the joints



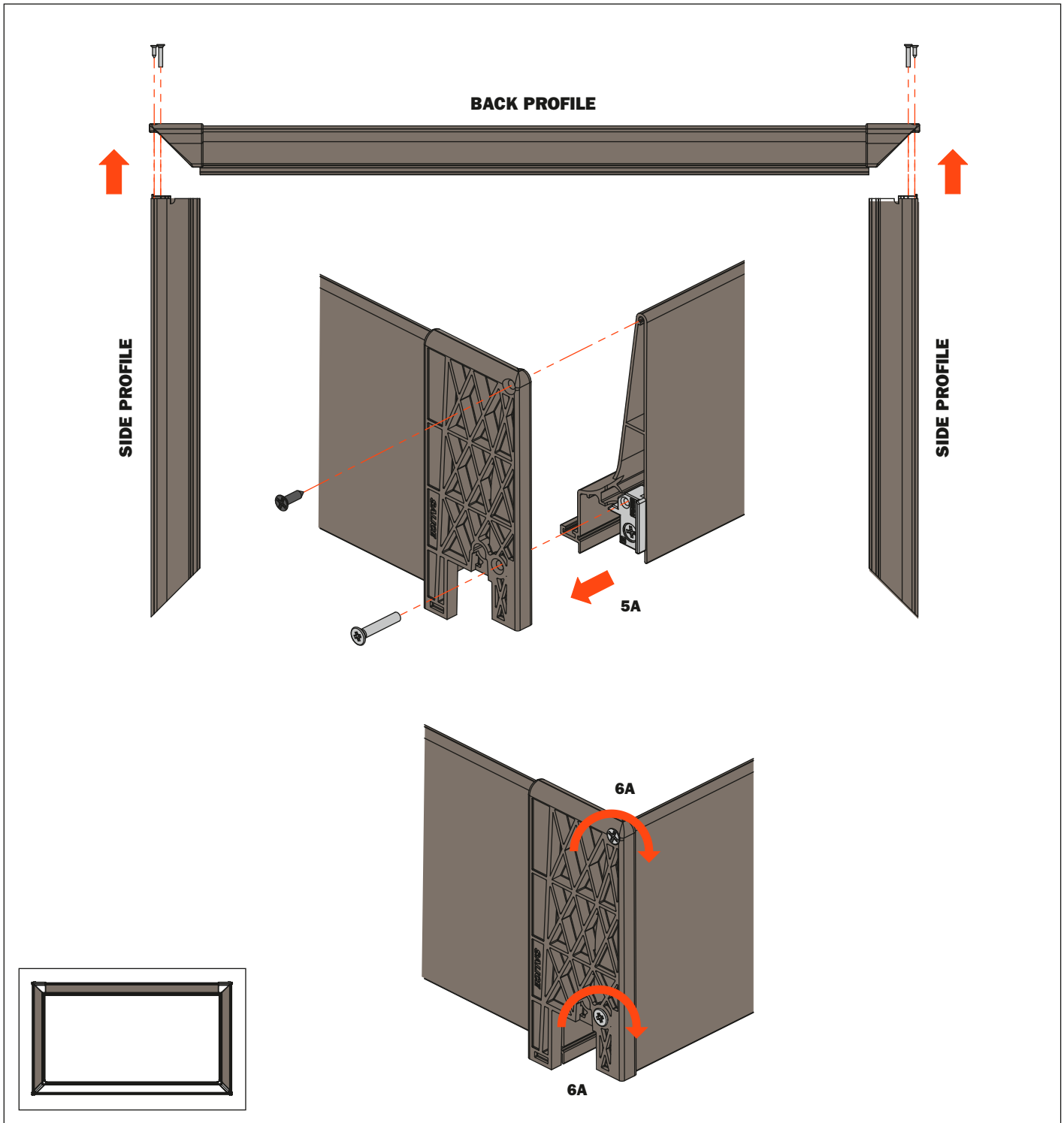
5. Insert the side profiles into the corners
6. Screw to fix the corners onto the joints



ADDITIONAL SCREW TO FIX THE BACK PROFILE WITH SIDE H 128

5A. Insert the side profiles into the corners

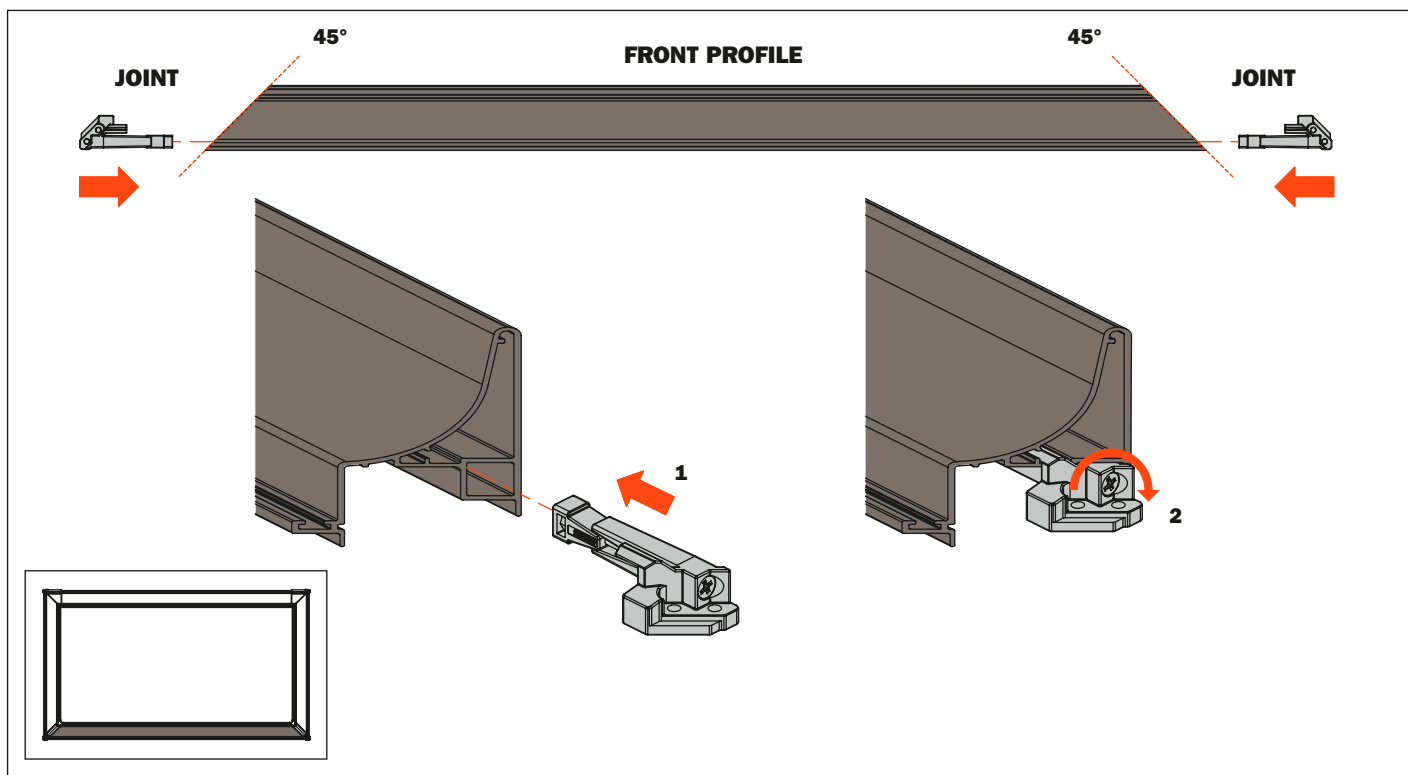
6A. Screw both the screws to fix the corners onto the joints and to fasten the profile



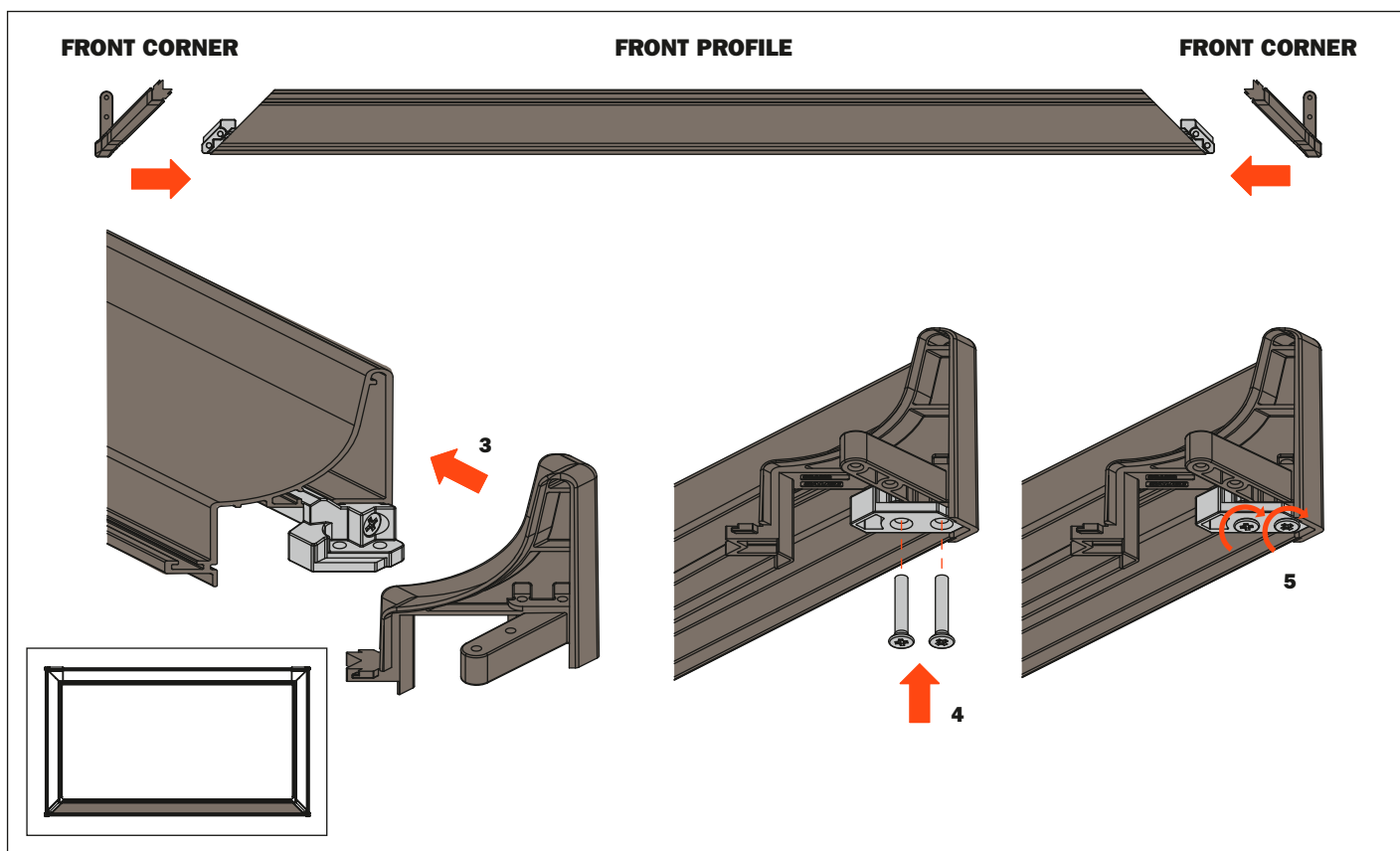
Assembly instructions

FRONT PROFILE

1. Insert the joints into the recess of the front profile until they reach the stop
Front profile to cut to length, 45° mitre cut end, see pages 31, 33, 35
2. Hold the joints in position and screw to fix



3. Insert the front corners onto the front profile until they reach the stop
4. Insert the fixing screws into the front corners onto the front profile
5. Screw to fix the corners



FRONT PROFILE

6. Insert the assembled front profile into the recess of the side profiles until it reaches the stop
7. Fix the assembled front profile onto the side profiles
8. Screw to fix the profiles

