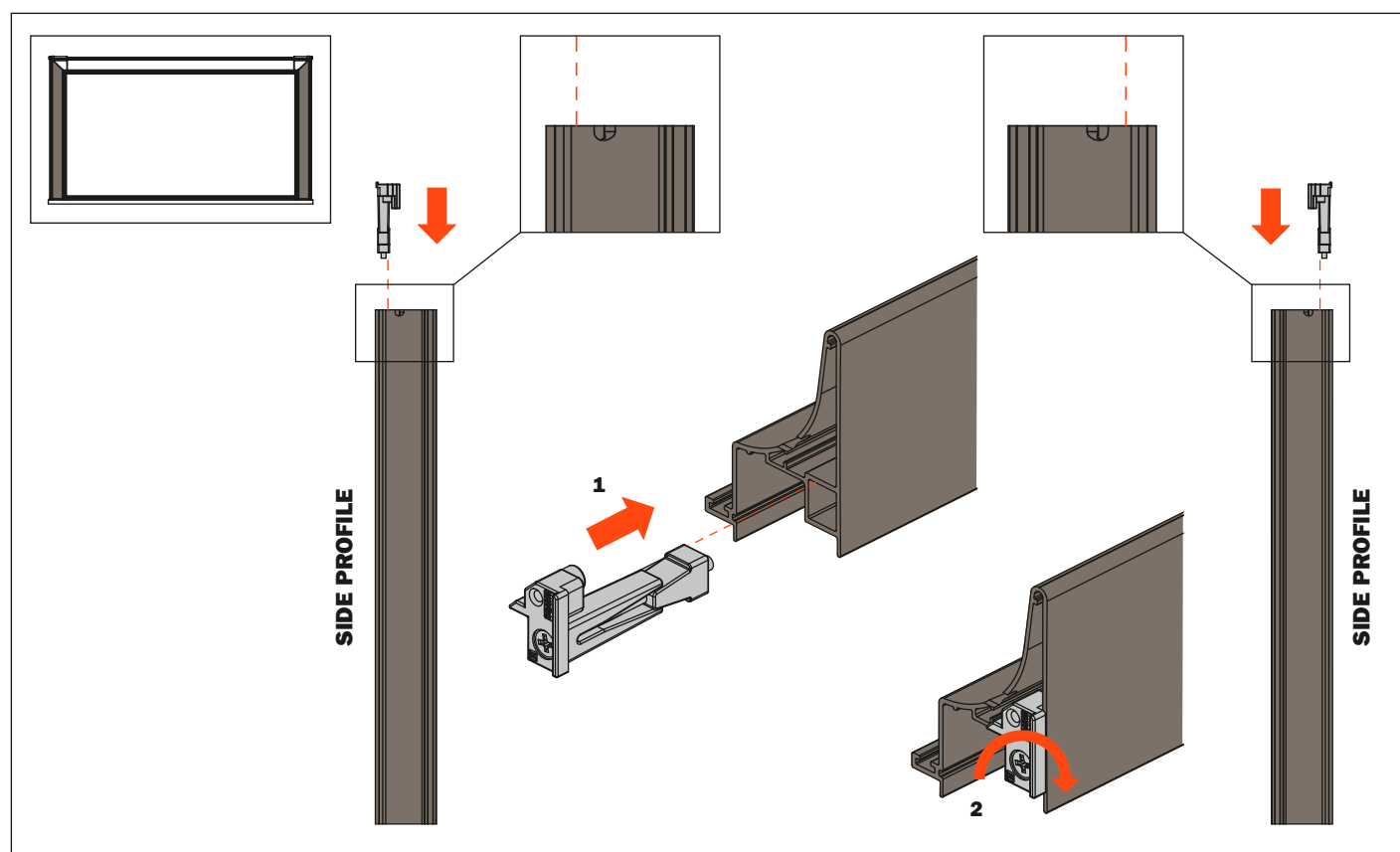
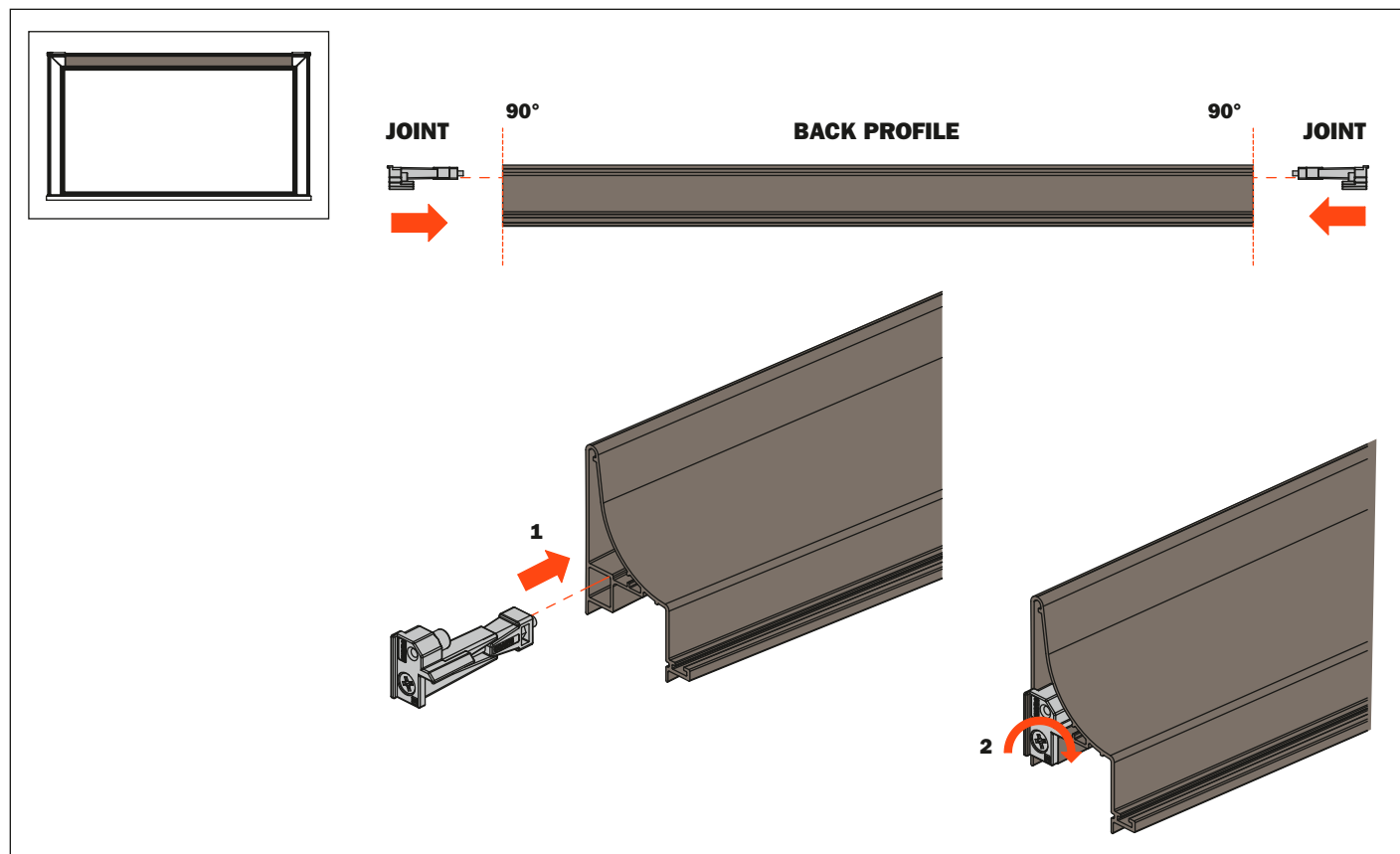


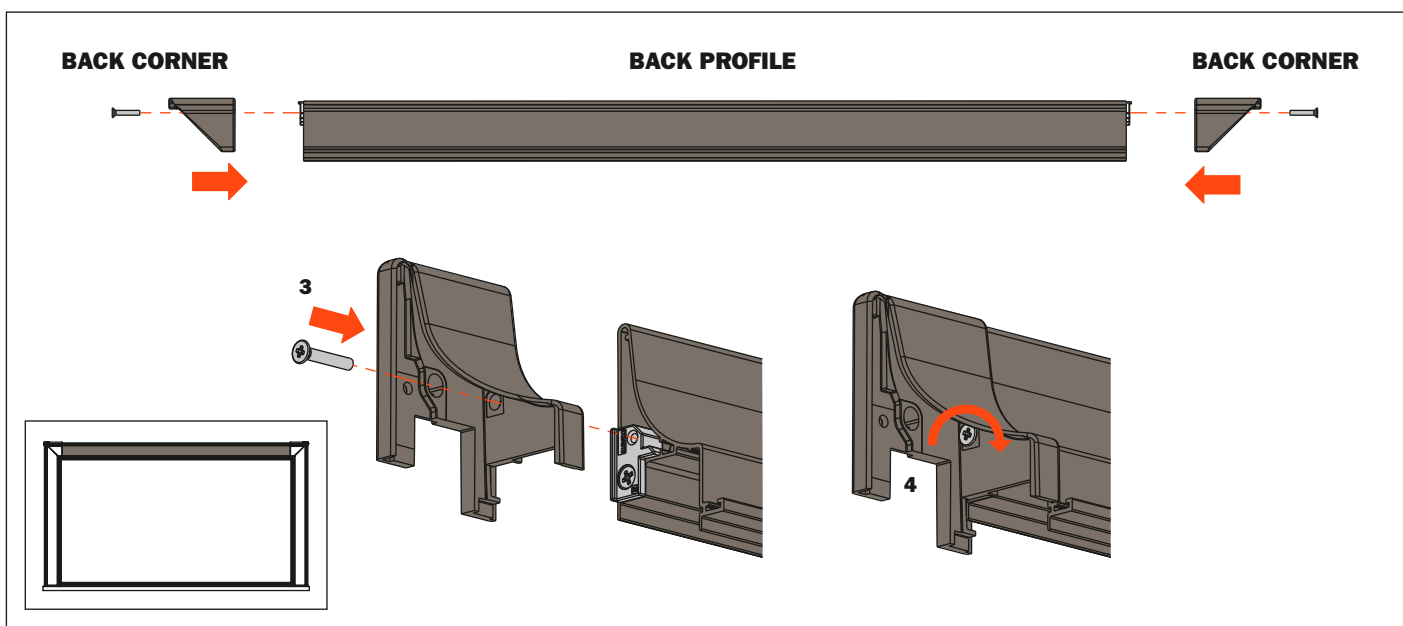
### BACK PROFILE

1. Insert the joints into the recess of the back profile and into the side profiles until they reach the stop  
Back profile to cut to length, 90° mitre cut end, see pages 23, 25, 27
2. Hold the joints in position and screw to fix

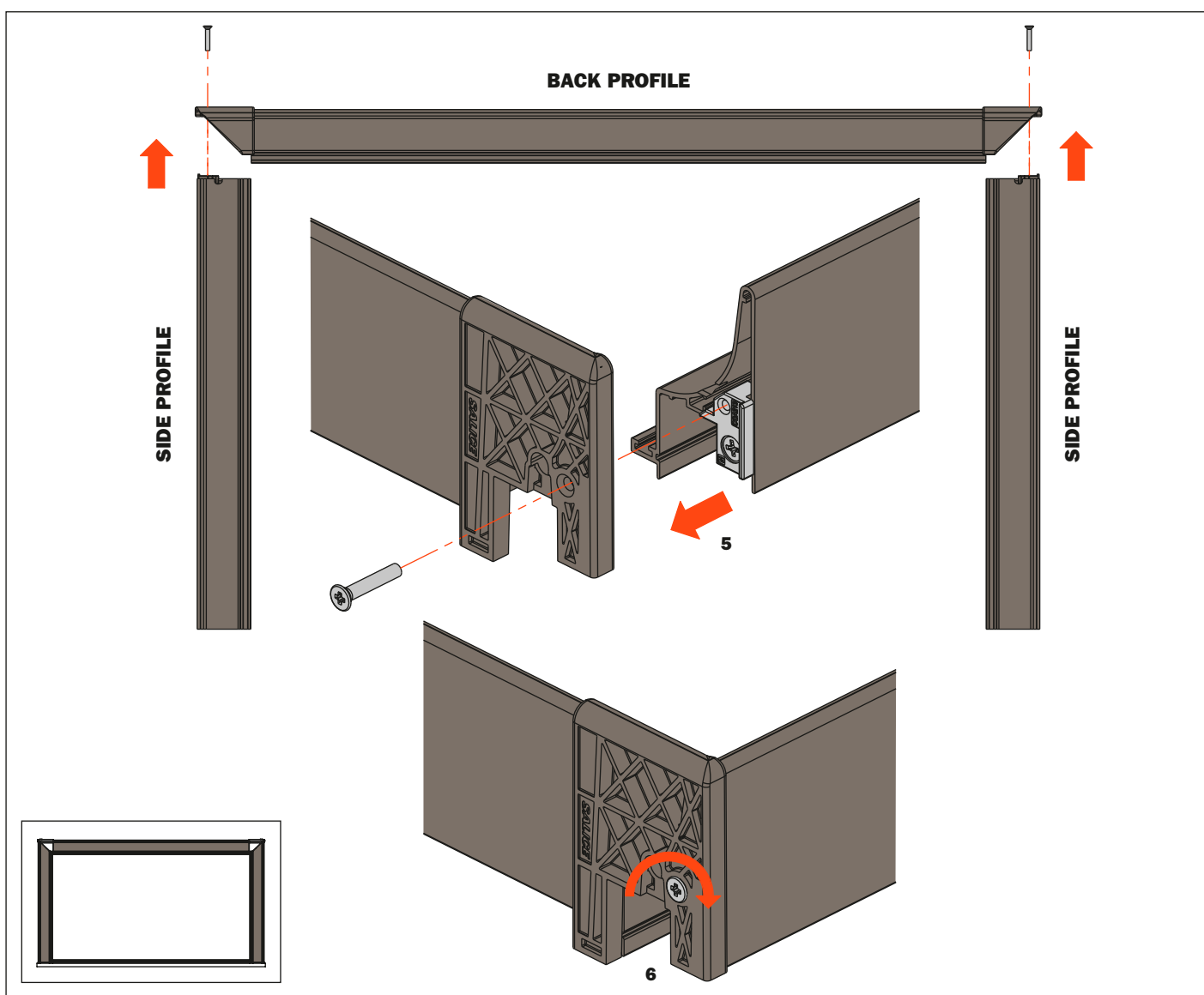


## Assembly instructions

3. Insert the back corners onto the back profile until they reach the stop
4. Screw to fix the corners onto the joints



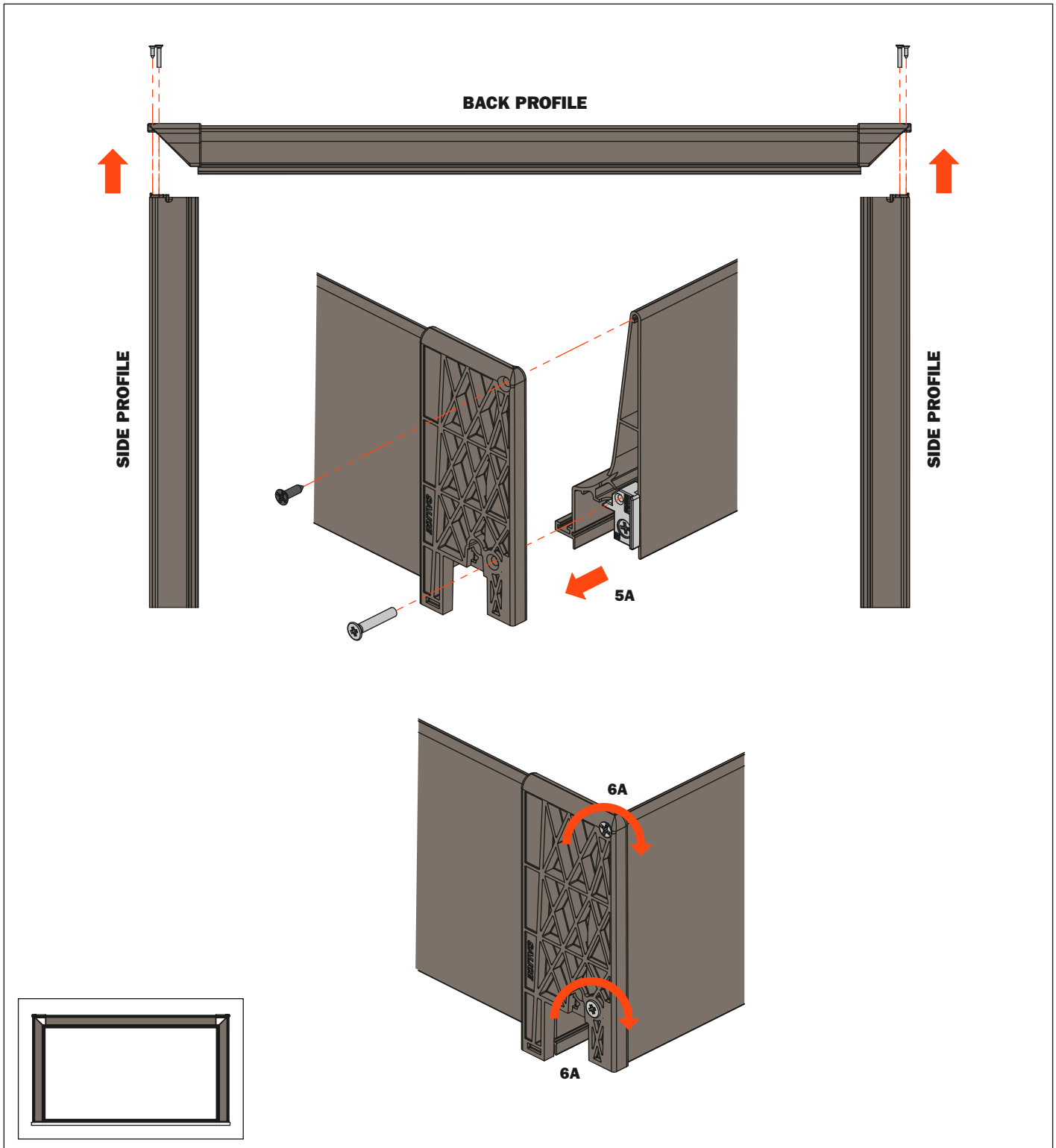
5. Insert the side profiles into the corners
6. Screw to fix the corners onto the joints



### ADDITIONAL SCREW TO FIX THE BACK PROFILE WITH SIDE H 128

5A. Insert the side profiles into the corners

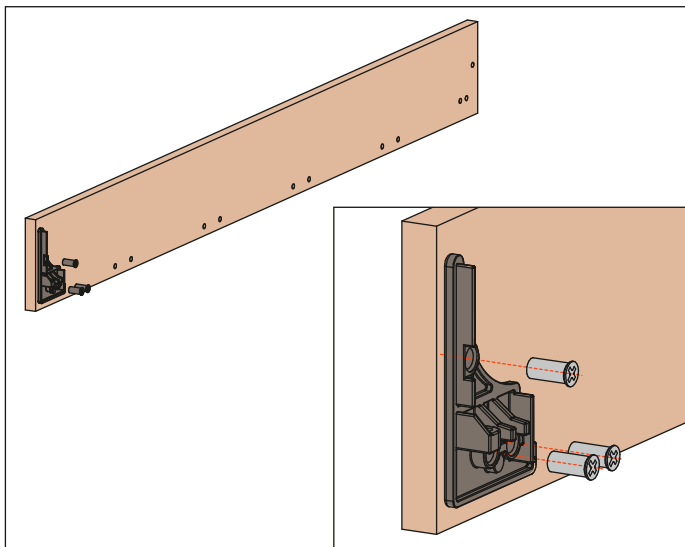
6A. Screw both the screws to fix the corners onto the joints and to fasten the profile



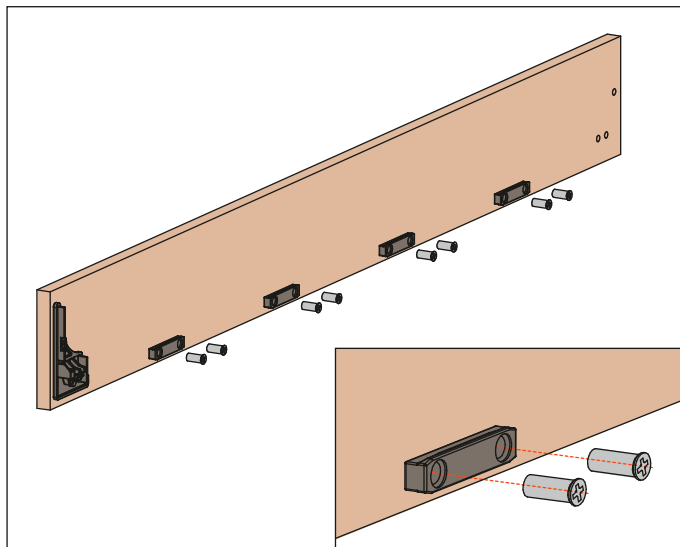
# Assembly instructions

## KIT FOR THE ASSEMBLY OF THE WOODEN FRONTAL

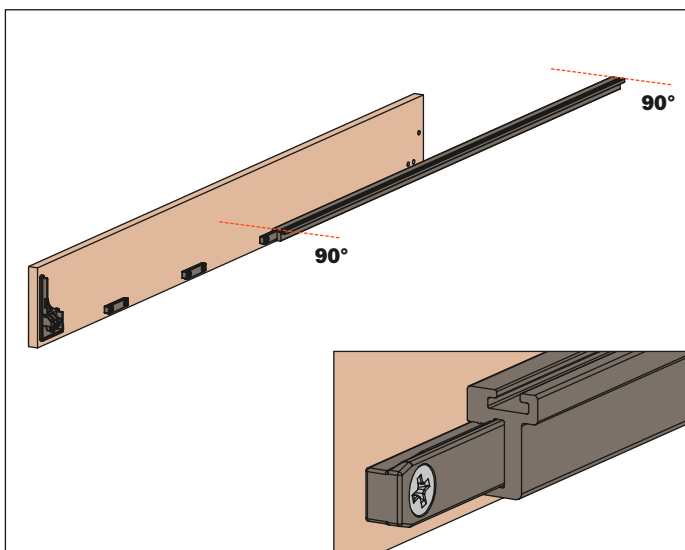
1. Screw the first cap to the frontal



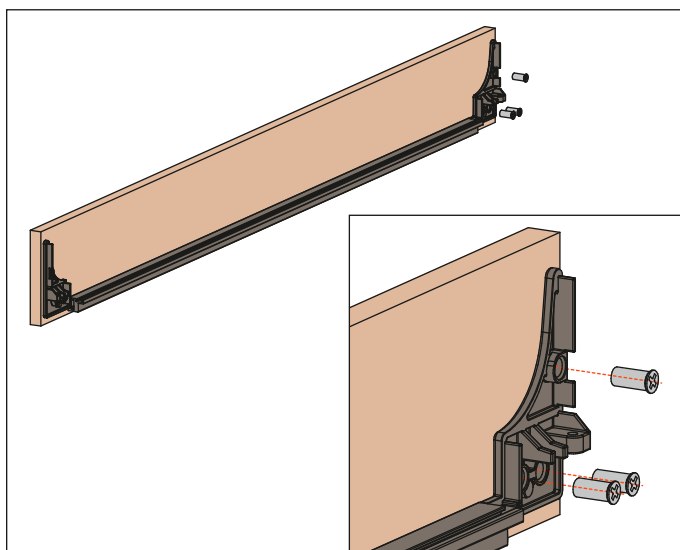
2. Screw the connecting elements to the frontal



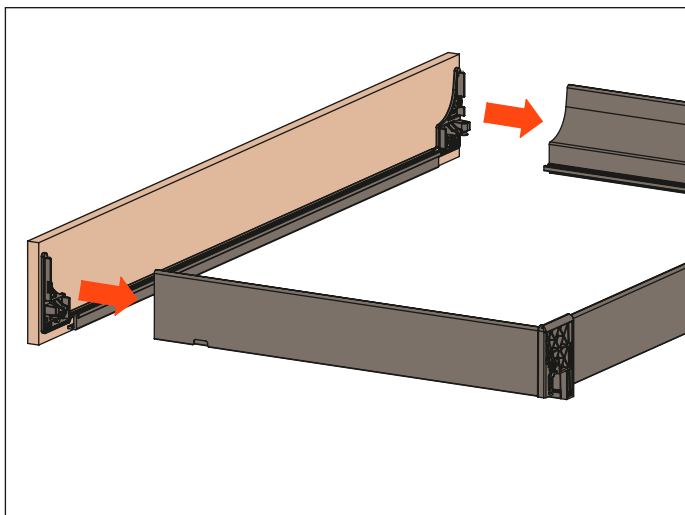
3. Insert and slide the front profile on the connecting elements  
Front profile support to cut to length, 90° mitre cut end, see pages 23, 25, 27.



4. Screw the second cap to the frontal



5. Insert the caps in both sides



6. Screw to fix the frontal to the drawer

