

Fly box



Technical Information

Fly box blind corner units: an innovative concept in the kitchen.

The two independent shelves come out completely through a single action to make the most of your space and to have everything always available at hand.

It requires a minimum door opening of 16-1/2".

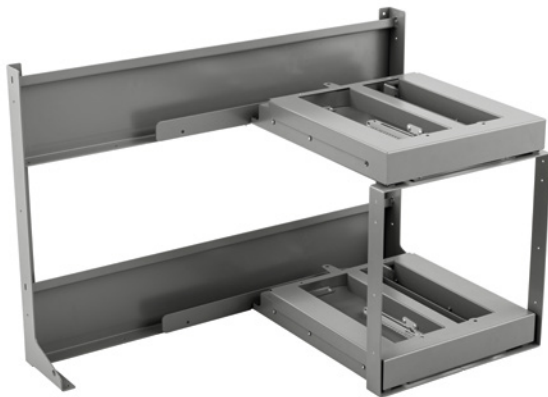
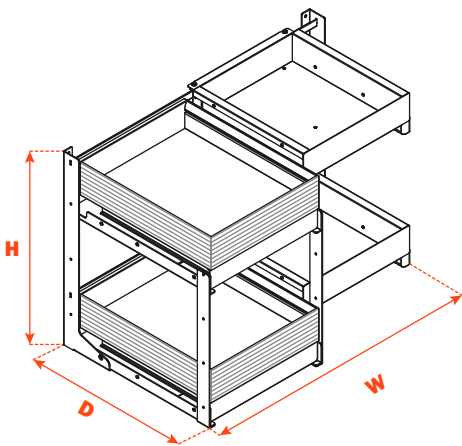
The product is reversible and its load capacity is 55 Lbs (25 kg) per shelf.

Dampened return allows continuity and smoothness of movement.

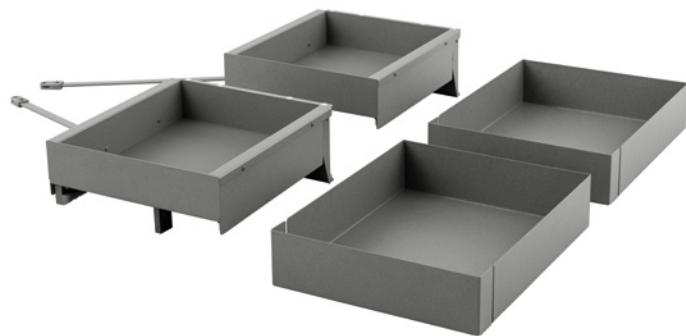
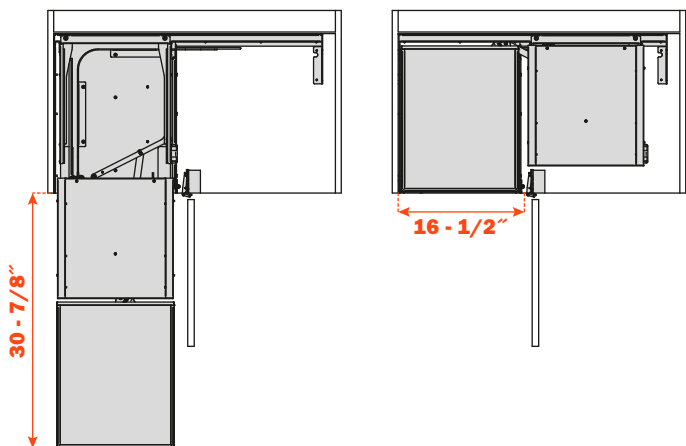
Available in an attractive textured Anthracite Gray finish.

Kit contents: 2 pull-out shelves. Side and bottom made of metal sheet. Reversible.

Technical information



Part#	Depth	Width	Height
QFLYBST452VGF	19-1/4"	32-1/2"	22-1/16"



Part#	Kit composed of 2 pull-out shelves. Side and bottom made of metal sheet. Reversible.
QFLYB45LGM	