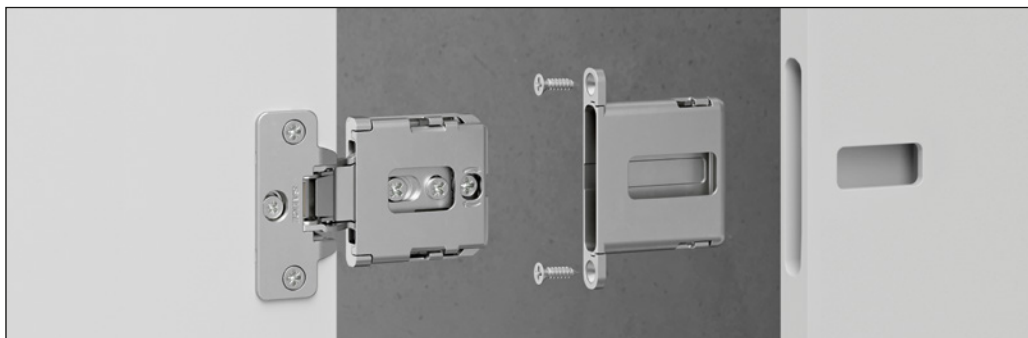


Conecta • Assembly • Single door with holder DQG3B



Fix the holder to the cabinet side using the woodscrews provided



Fully insert the hinge into the holder



Once inserted, lock the hinge into place through the back cam

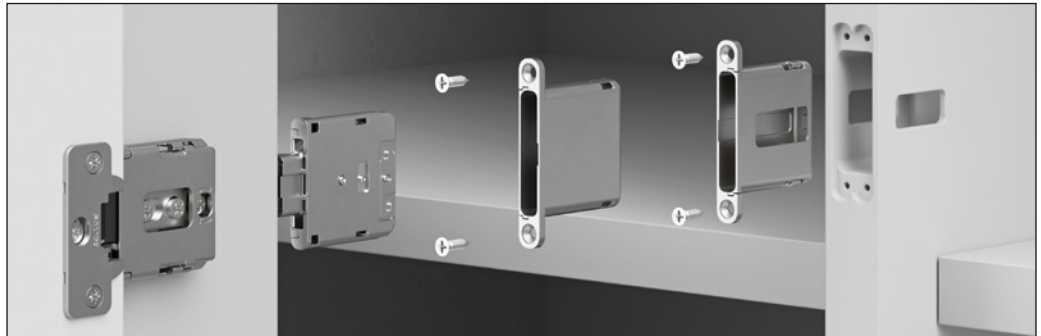


Apply the flange and the screw cover caps



Double doors with holder DQG3B

Fix the holders to the cabinet side using the woodscrews provided



Fully insert the hinges into the holders



Once inserted, lock the hinges into place through the back cam



Apply the flange and the screw cover caps

