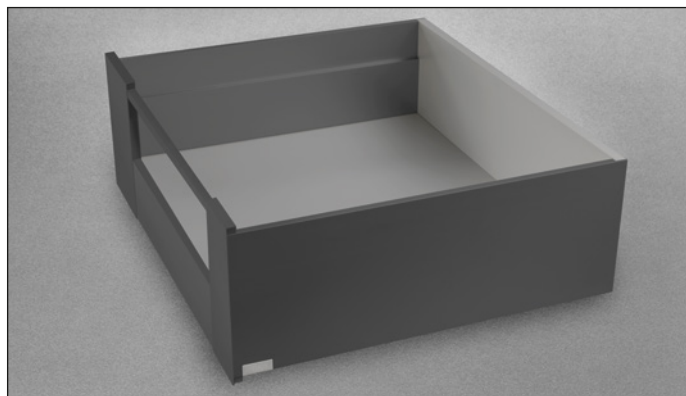


4-Sided Internal Drawer with gallery rail - H 178 mm

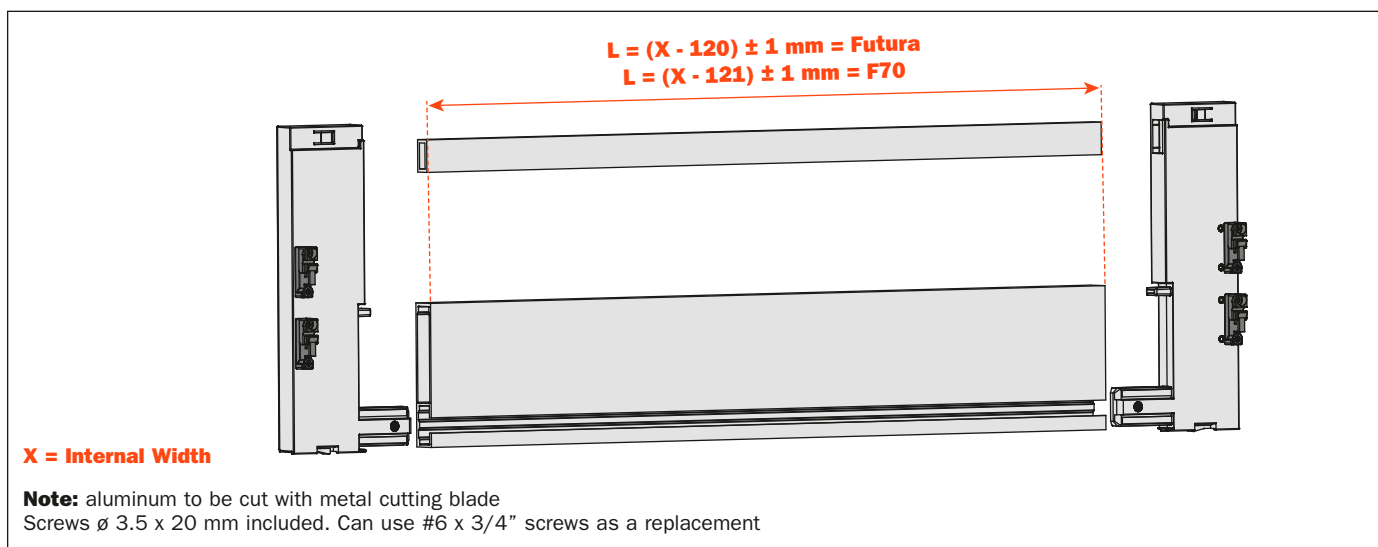


Height of Lineabox side 178 mm
Max. height of front panel 203 mm
For use with Futura and F70 full-extension runners

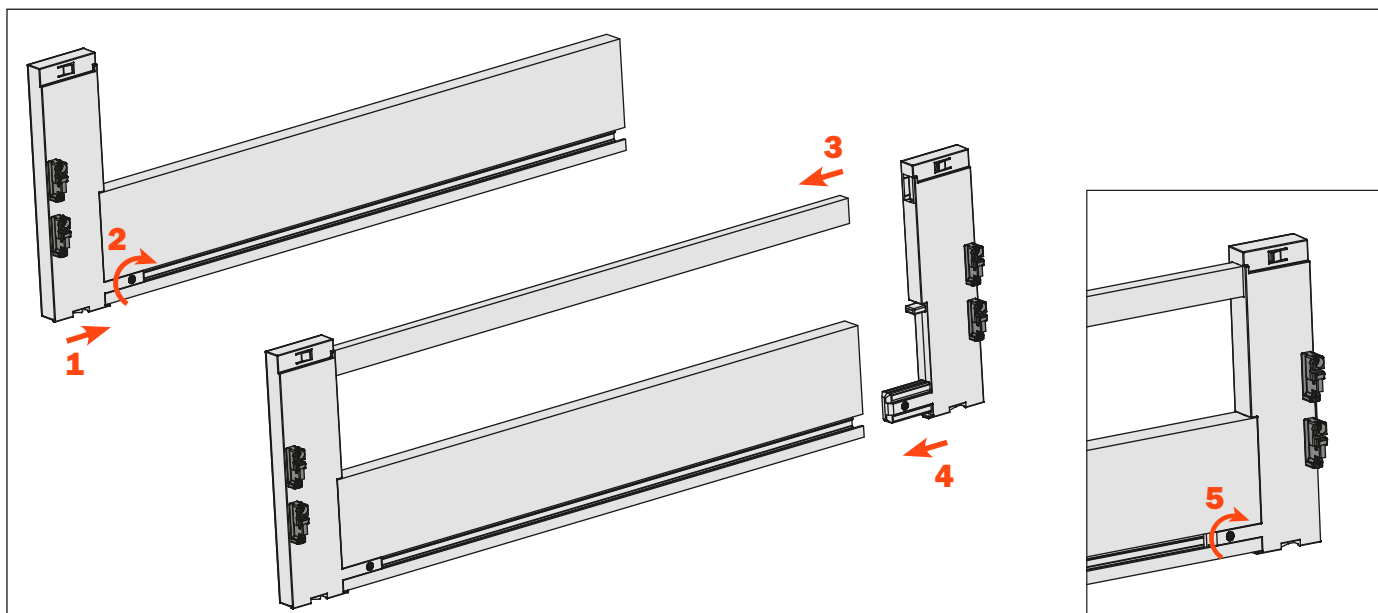
- Rapid assembly system, with no machinery or templates needed
- Rapid mounting and removal of front panel
- Can be personalized according to the width of the cabinet
- Height, sideways and depth adjustment of the drawer incorporated in the runner fixing clips
- Material:
 - aluminum for Lineabox sides, front panel and railing
 - plastic for front panel adapters
 - metal for covers
- Finishes:
 - White
 - Gray
 - Stainless steel

Assembly features

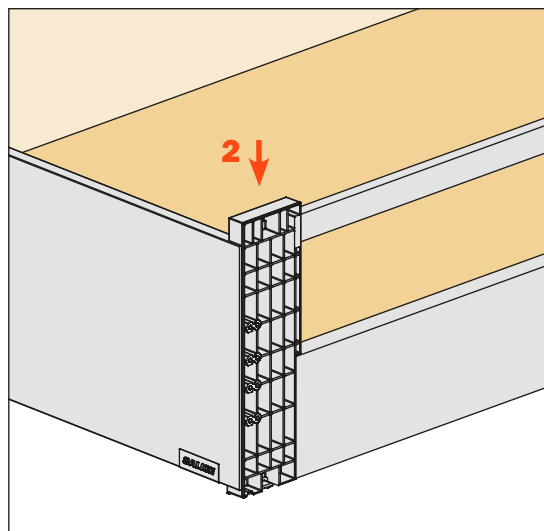
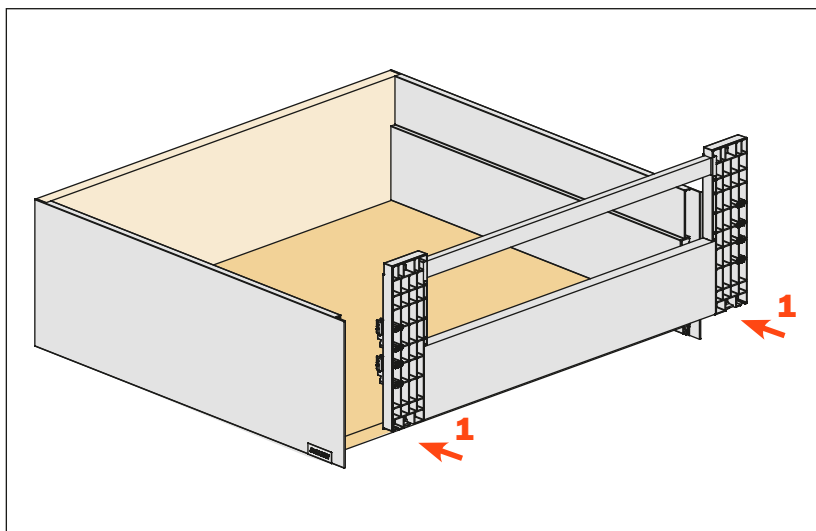
Cut the profile and the gallery rail to length



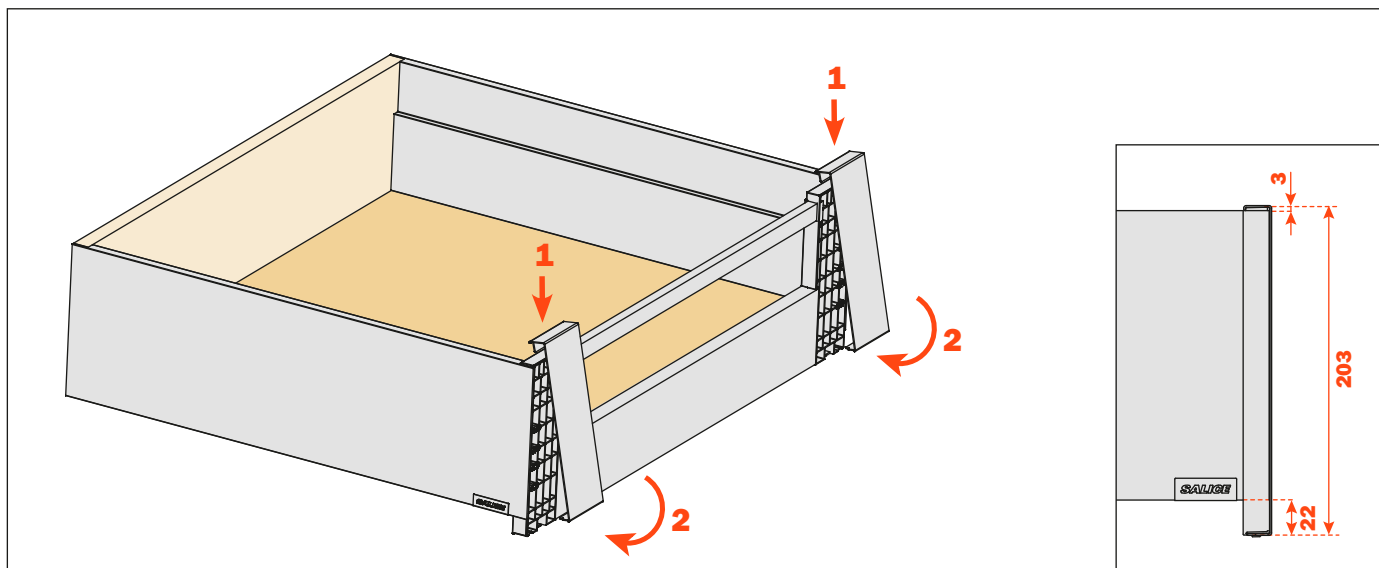
Insert the front panel adapters into the front panel and the railing and tighten the locking screws.
 Frontal fixings are already premounted.



Fix the front panel to the drawer



Fix the covers



To correct any possible cutting errors of the panel, loosen and retighten the indicated screws

