

Excessories - shelves - hanger rail for clothes and rail-holder supports

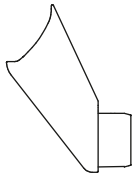
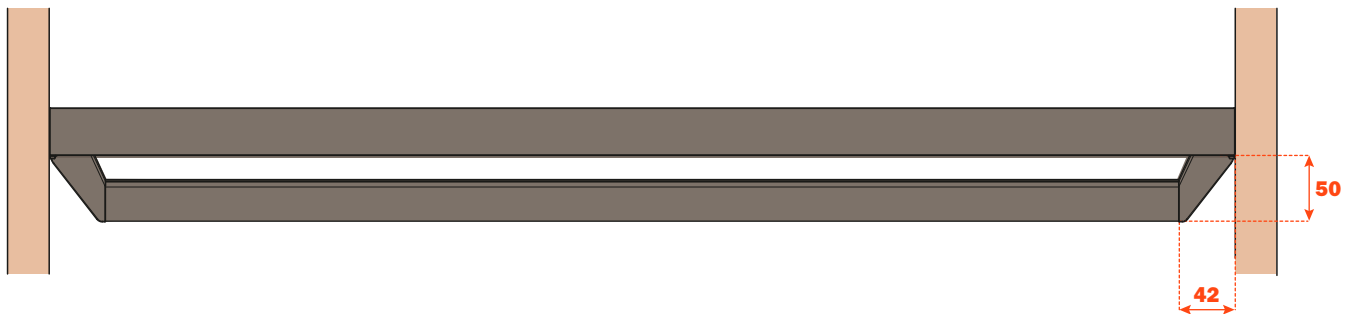
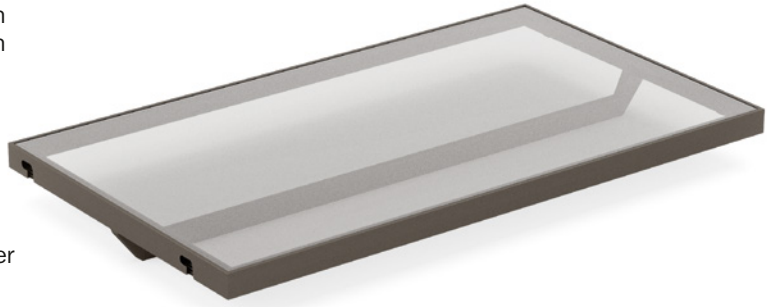
VE80DAHA0133B = Hanger rail for clothes, 1000 mm length

VE80DAHA0233B = Hanger rail for clothes, 1000 mm length

VE80GMRA00533B = Side rail-holder supports

Hanger rail for clothes and rail-holder supports for shelf with aluminium frame

- Hanger rail material: aluminium, coated with epoxy-based powder, section 15x30 mm
- Supports material: die-cast, coated with epoxy-based powder
- Finish: metal grey brown
- Max. recommended load capacity:
 - up to 1200 mm width: 30 Kg
 - from 1201 mm to 1500 mm width: 15 Kg
- Packing: 20 pieces per box
- Custom-length hanger rail available when ordering more than 20 pieces



- Screw-fix the adapters to the shelf
- Insert the hanger rail into the rail-holders
- Screw-fix the rail-holders to the adapters

