

## Mechanical Push

The PUSH-System is a self-opening system for the doors of all types of handleless furniture.

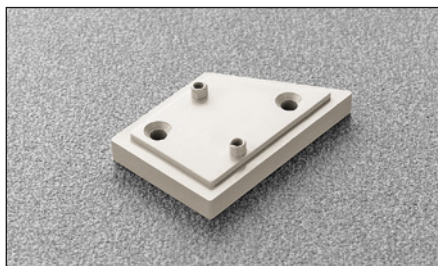
It consists of a series of self-opening hinges, release devices that can be fitted to the top, base or side panel of the cabinet, and retaining catches to be fitted to the back of the door.

The retaining catches can be pressure-fixed or screw-fixed.

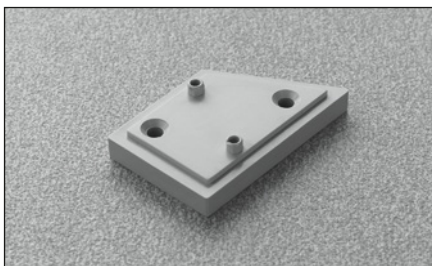
For doors over 1600 mm in height, we suggest that you use two mechanical release catches.



**DP44XXBD** - beige



**DP44XXGD** - grey

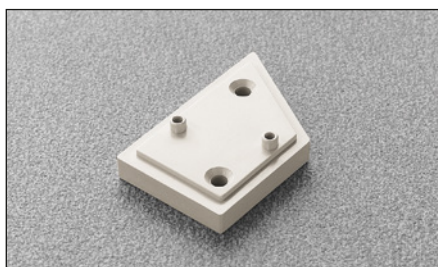


Right spacer H = 4.8 mm.

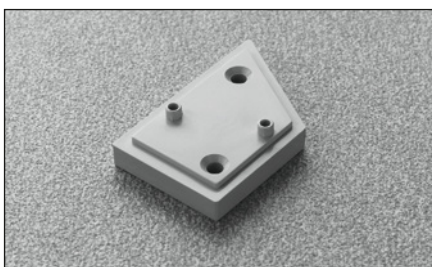
**Packing**

Boxes 300 pcs.

**DP44XXBS** - beige



**DP44XXGS** - grey



Left spacer H = 4.8 mm.

**Packing**

Boxes 300 pcs.

**DP50SN0**



Orange insertion tool for retaining catch DP29SN\_.

