

Mechanical Push

The PUSH-System is a self-opening system for the doors of all types of handleless furniture.

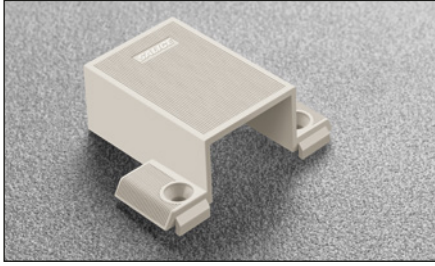
It consists of a series of self-opening hinges, release devices that can be fitted to the top, base or side panel of the cabinet, and retaining catches to be fitted to the back of the door.

The retaining catches can be pressure-fixed or screw-fixed.

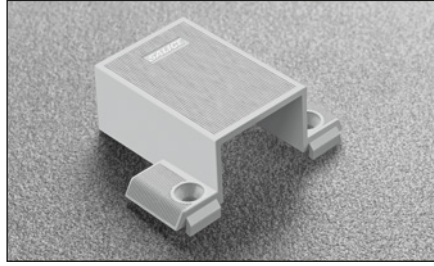
For doors over 1600 mm in height, we suggest that you use two mechanical release catches.



DP52SNB - beige



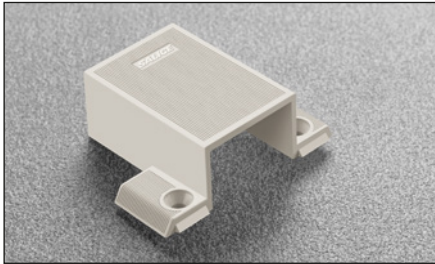
DP52SNG - grey



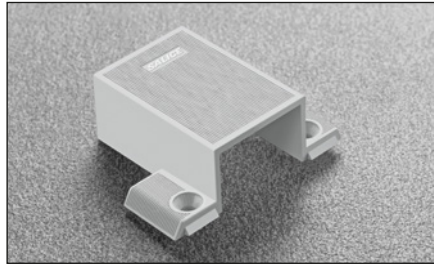
Single adapter.
6x40 mm drilling.
With assembly stop device.
DP53SN_ = single adapter with sideways adjustment.

Packing
Boxes 300 pcs.

DP52SNBR - beige



DP52SNGR - grey



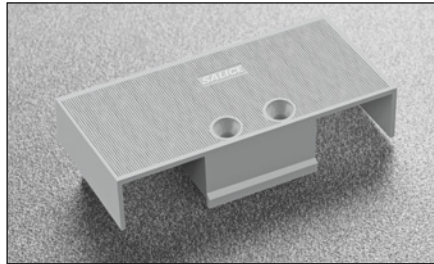
Single adapter.
6x40 mm drilling.
Without assembly stop device.
DP53SN_R = single adapter with sideways adjustment.

Packing
Boxes 300 pcs.

DP54SNB - beige



DP54SNG - grey



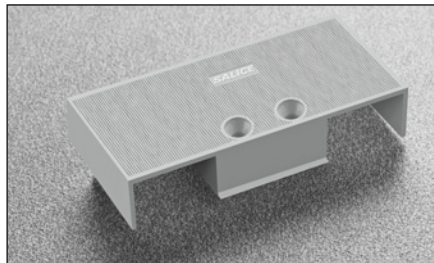
Double adapter.
6x16 mm drilling.
With assembly stop device.

Packing
Boxes 150 pcs.

DP54SNBR - beige



DP54SNGR - grey



Double adapter.
6x16 mm drilling.
Without assembly stop device.

Packing
Boxes 150 pcs.