

## Mechanical Push

The PUSH-System is a self-opening system for the doors of all types of handleless furniture.

It consists of a series of self-opening hinges, release devices that can be fitted to the top, base or side panel of the cabinet, and retaining catches to be fitted to the back of the door.

The retaining catches can be pressure-fixed or screw-fixed.

For doors over 1600 mm in height, we suggest that you use two mechanical release catches.



## Mechanical Push - Retaining catches for wooden doors

**DP29SNB** - beige



**DP29SNG** - grey



Retaining catch for wooden door.  
Knock-in.

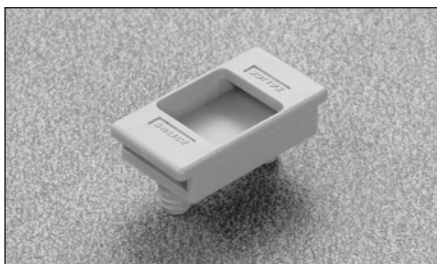
**Packing**

Boxes 300 pcs.

**DP29SNBMC** - beige



**DP29SNGMC** - grey

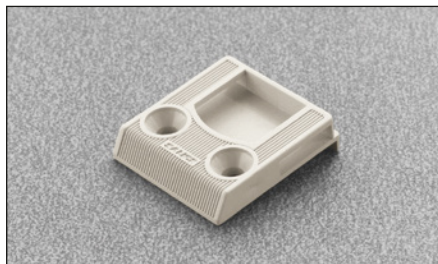


Retaining catch for wooden door and special  
assemblies.  
Knock-in.

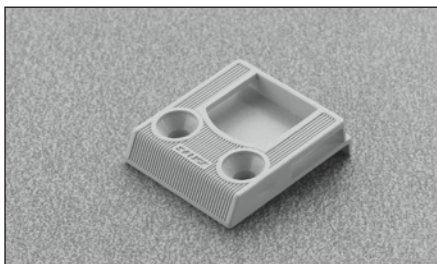
**Packing**

Boxes 300 pcs.

**DP29SNBI** - beige



**DP29SNGI** - grey

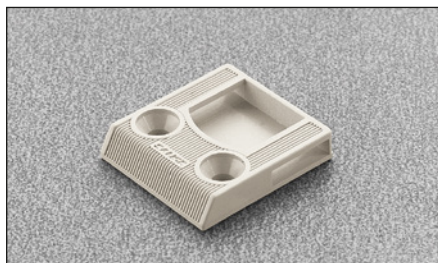


Retaining catch for wooden door.  
With assembly stop device.  
Screw-on.

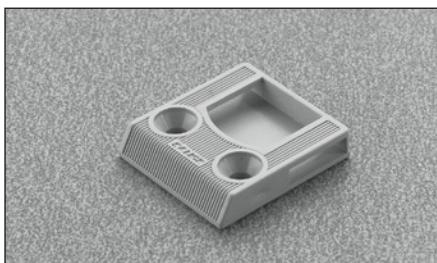
**Packing**

Boxes 300 pcs.

**DP29SNBR** - beige



**DP29SNGR** - grey



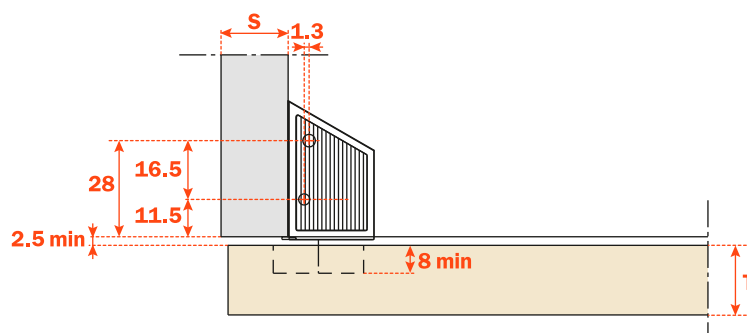
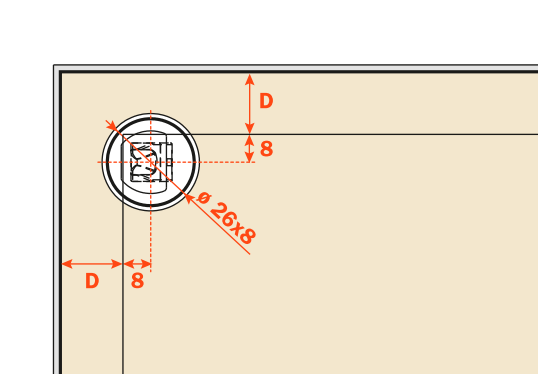
Retaining catch for wooden door.  
Without assembly stop device.  
Screw-on.

**Packing**

Boxes 300 pcs.

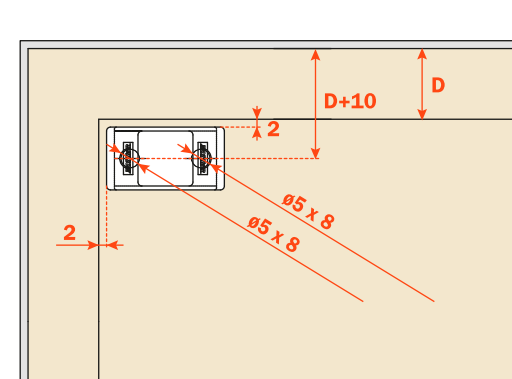
**N.B.: Drilling patterns at page 15.**

## Fulloverlay door

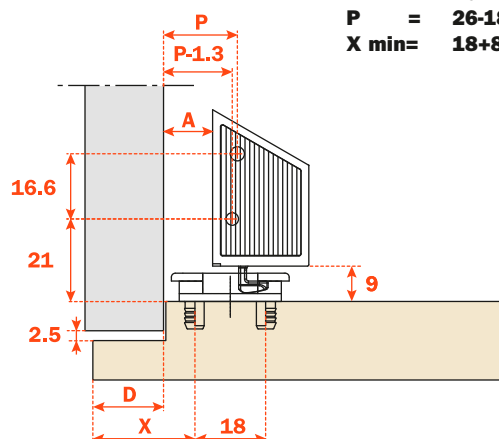


**D** = Door overlay on side and top of the cabinet  
**Drilling distance of retaining catch** =  $D + 8$

## Special assemblies



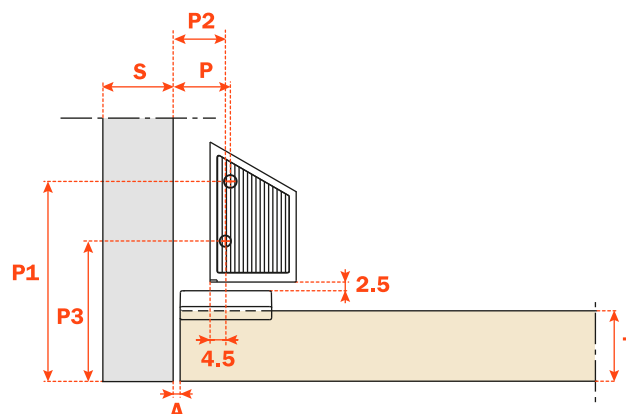
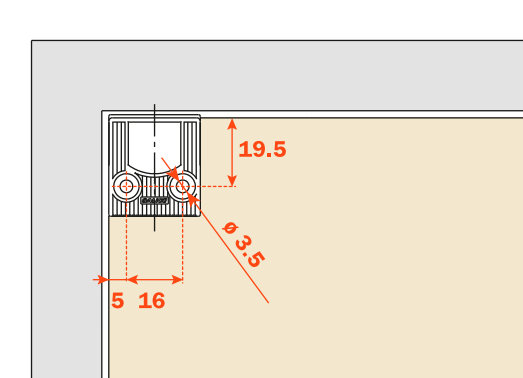
**D** = Door overlay on side and top of the cabinet



$$\begin{aligned} A &= X - D + 4.5 \\ P &= X - D + 10.8 \\ X \text{ min} &= D + 8 \end{aligned}$$

$$\begin{aligned} A &= 26 - 18 + 4.5 = 12.5 \\ P &= 26 - 18 + 10.8 = 18.8 \\ X \text{ min} &= 18 + 8 = 26 \end{aligned}$$

## Inset door



$$\begin{aligned} P &= 14.8 + A \\ P1 &= 36.8 + T \\ P2 &= P - 1.3 \\ P3 &= P1 - 16.5 \end{aligned}$$