

Technical information about the installation of SMOVE with adapter



SMOVE D005 can be fitted using:

- 1) adapters to be screw-fixed to the cabinet side (see pages 19 and 20);
- 2) adapters with double sided adhesive system (see page 22).

It is suggested for doors from 450 mm to 600 mm width.

For wood-based and alu-framed doors over 1600 mm height, it may be necessary to use two Smove, one to be fixed to the upper part and the second to the lower part of the cabinet side opposite the hinges.

SMOVE D006 can be fitted using:

- 1) adapters to be screw-fixed to the top or bottom panel of the cabinet (see pages 19 and 20);
- 2) adapters with double sided adhesive system (see page 22).

For wood-based and alu-framed doors over 1600 mm height, it may be necessary to use two Smove, one to be fixed to the top and the second to the base panel of the cabinet.



SMOVE D008 can be fitted using:

- 1) adapters to be screw-fixed to the top or bottom panel of the cabinet (see pages 19 and 20); Smove should be positioned at a distance of 27 mm from the inside face of the cabinet side. If using cruciform adapters, the correct position is located by moving the adapters so that one wing is in contact with the inside face of the cabinet.
- 2) adapters with double sided adhesive system (see page 22).

For doors over 1600 mm height, it may be necessary to use two Smove, one to be fixed to the top and the second to the base panel of the cabinet.

- 3) adapters to be screw-fixed to the inside of the cabinet door (see page 24).

D008 is used for doors up to 720 mm high.



SMOVE D009 and D010 can be fitted using:

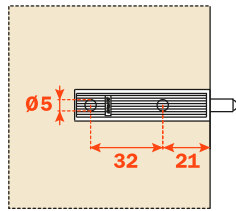
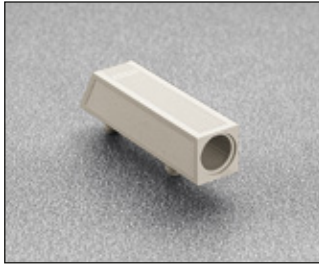
- 1) longitudinal adapters to be screw-fixed to the base panel of the cabinet (see pages 19 and 20);
- 2) adapters to be screw-fixed to the inside of the cabinet door (see page 24).

D009 is used for doors between 720 mm and 1600 mm high.

D010 is used for doors over 1600 mm high.

Adapters to be screw fixed to the cabinet

D063SNXR

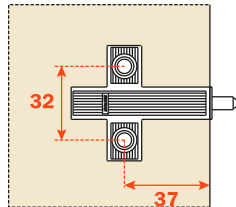


D063SNGR = grey
D063SNBR = beige

Longitudinal plastic adapter.
To be fixed with dowels.
Without assembly stop device.

Packing
Boxes 500 pcs.
Pallets 12.000 pcs.

D064SNXN

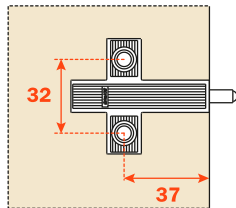


D064SNGN = grey
D064SNBN = beige

Cruciform plastic adapter.
To be fixed with wood screws.
37x32 mm drilling.
With assembly stop device.

Packing
Boxes 500 pcs.
Pallets 12.000 pcs.

D064SNXR



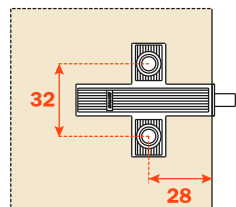
D064SNGR = grey
D064SNBR = beige

Cruciform plastic adapter.
To be fixed with wood screws.
37x32 mm drilling.
Without assembly stop device.

Packing
Boxes 500 pcs.
Pallets 12.000 pcs.

D065SNGR = grey - to be fixed with Euro screws.
D065SNBR = beige - to be fixed with Euro screws.

D060SNXN

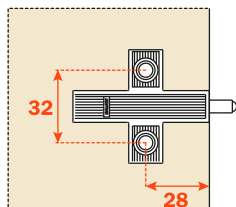


D060SNGN = grey
D060SNBN = beige

Cruciform plastic adapter.
To be fixed with wood screws.
28x32 mm drilling.
With assembly stop device.

Packing
Boxes 500 pcs.
Pallets 12.000 pcs.

D060SNXR

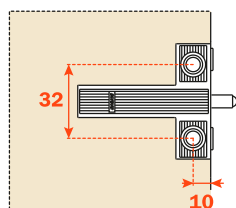


D060SNGR = grey
D060SNBR = beige

Cruciform plastic adapter.
To be fixed with wood screws.
28x32 mm drilling.
Without assembly stop device.

Packing
Boxes 500 pcs.
Pallets 12.000 pcs.

D066SNXN



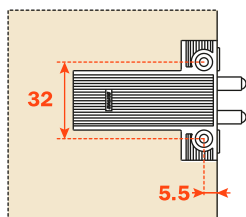
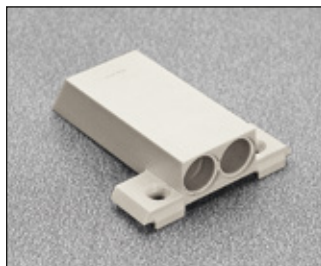
D066SNGN = grey
D066SNBN = beige

Cruciform plastic adapter.
To be fixed with wood screws.
10x32 mm drilling.
With assembly stop device.

Packing
Boxes 500 pcs.
Pallets 12.000 pcs.

SMOVE - Adapters to be screw fixed to the cabinet

D070SNXN

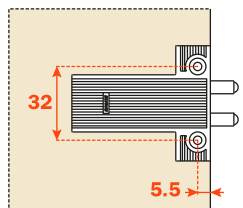
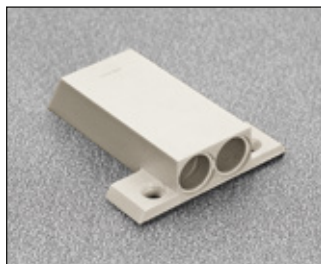


D070SNGN = grey
D070SNBN = beige

Double cruciform plastic.
To be fixed with wood screws.
5.5x32 mm drilling.
With assembly stop device.

Packing
Boxes 500 pcs.
Pallets 12.000 pcs.

D070SNXR

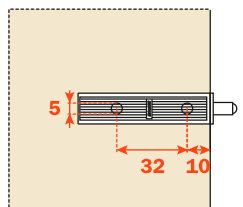


D070SNGR = grey
D070SNBR = beige

Double cruciform plastic.
To be fixed with wood screws.
5.5x32 mm drilling.
Without assembly stop device.

Packing
Boxes 500 pcs.
Pallets 12.000 pcs.

D076XX9R



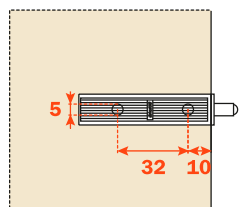
Longitudinal die-cast adapter.
To be fixed with wood screws.
Without assembly stop device.

Packing
Boxes 500 pcs.
Pallets 12.000 pcs.

Cover caps to be ordered separately.

D077XX9R - to be fixed with Euro screws.

D076SN9



Longitudinal die-cast adapter.
To be fixed with wood screws.
With assembly stop device.

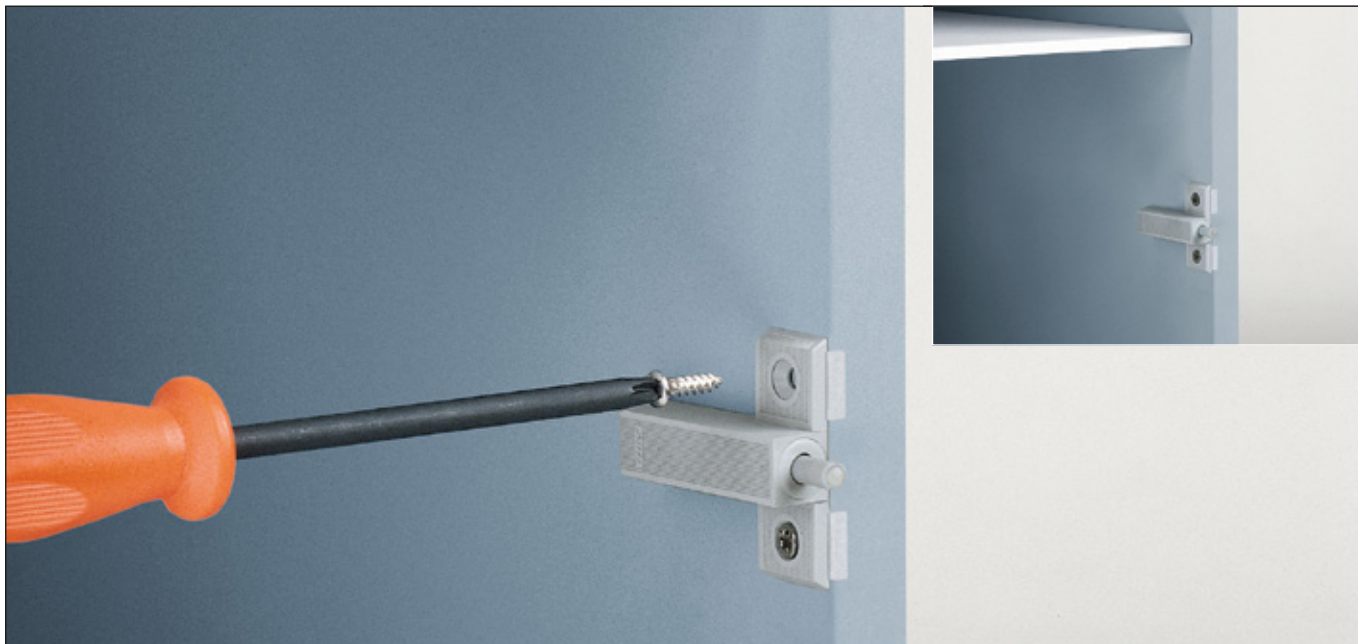
Packing
Boxes 500 pcs.
Pallets 12.000 pcs.

Cover caps to be ordered separately.

D077SN9 - to be fixed with Euro screws.

Adapter with assembly stop device

Insert Smove into the adapter. Place the adapter in the position in the cabinet appropriate to the version of Smove to be installed, using the assembly stop device for final positioning.



Adapter without assembly stop device

Insert Smove into the adapter. Place the adapter in the position in the cabinet appropriate to the version of Smove to be installed, based on the dimensions indicated for the type of adapter.

