



Technical information

Hinges for glass doors.

Hole diameter 26 mm.

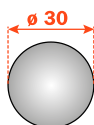
94° opening.

For use with glass from 4 mm to 6 mm thickness.

Possible drilling distance on the door (K): from 5.5 to 6.5 mm.

Compatible with all traditional Series 200 mounting plates and with all Domi snap-on mounting plates.

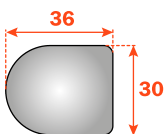
P2CTA



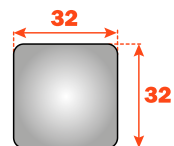
Fancy covers

see the leaflet "Accessories" for the available finishes.

P2CBA



P2CQA



Packing

Boxes 150 pcs.
Pallets 3.600 pcs.

CA sprung hinge

The solution of assembly problems where doors are mounted at a positive or negative angle requires the verification of drilling distances by a practical trial. Please do not hesitate to consult our technical support department for assistance.

Technical information

Hinges for glass doors with positive angled assembly.

Hole diameter 26 mm.

94° opening.

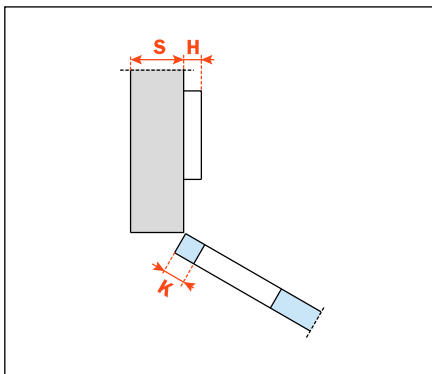
For use with glass from 4 mm to 6 mm thickness.

Possible drilling distance on the door (K): from 5.5 to 6.5 mm.

Compatible with all Series 200 traditional mounting plates and with all Domi snap-on mounting plates.

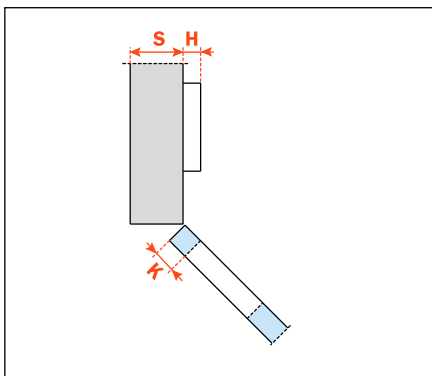
Applications with doors set at any angle between - 7.5° to + 70° are possible by combining the appropriate hinge and mounting plate.

Arm 30°



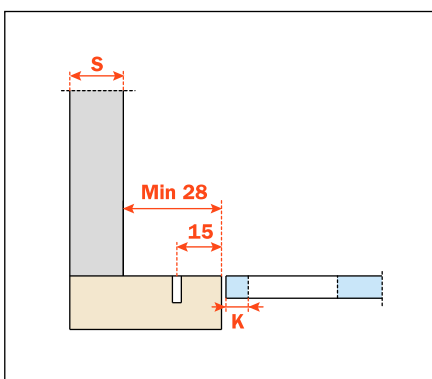
CA - C2C7E39

Arm 45°



CA - C2C7M39

Crampon



Crampon hinges. To be used only with Series 200 mounting plates for traditional assembly and drilling 28x32 mm.

CA - C2C7N39

