



## Technical information

### Hinges for glass doors.

Hole diameter 26 mm.

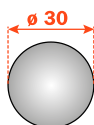
94° opening.

For use with glass from 4 mm to 6 mm thickness.

Possible drilling distance on the door (K): from 5.5 to 6.5 mm.

Compatible with all traditional Series 200 mounting plates and with all Domi snap-on mounting plates.

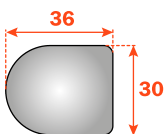
## P2CTA



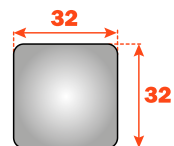
## Fancy covers

see the leaflet "Accessories" for the available finishes.

## P2CBA



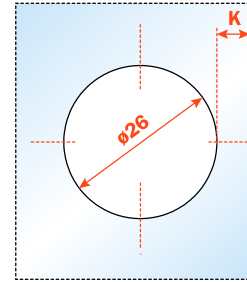
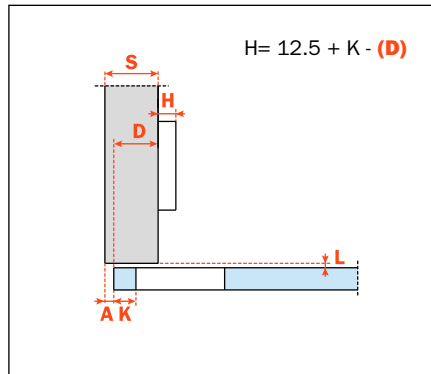
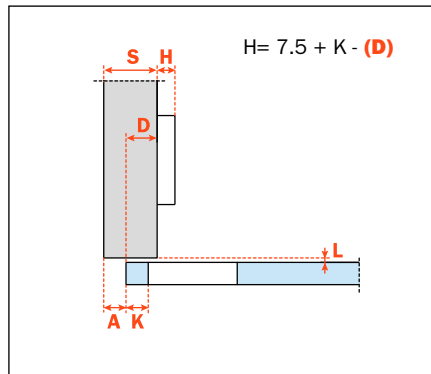
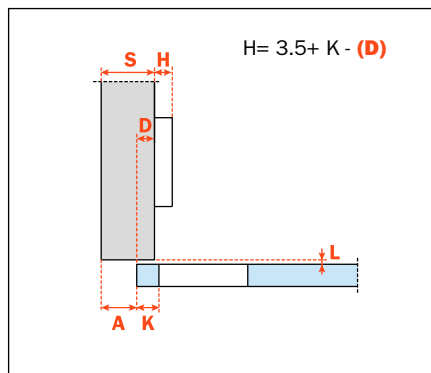
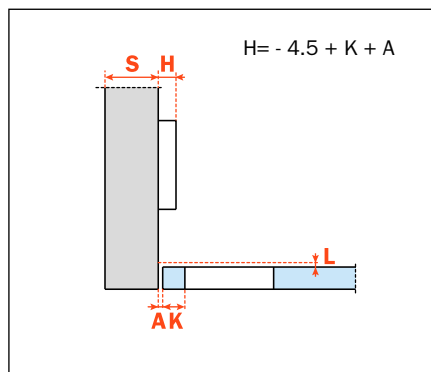
## P2CQA



**Packing**

Boxes 150 pcs.  
Pallets 3.600 pcs.

Use these formulas to determine the type of hinge arm, the drilling distance "K" and the height of the mounting plate "H" which is necessary to solve each application problem.

**CA sprung hinge****Arm 0****CA - C2C7A39****Arm 5****CA - C2C7D39****Arm 9****CA - C2C7G39****Arm 17****CA - C2C7P39**